

Recommendations on fabric: natural or mixed light-weight suiting fabric.

You will also need: fusible interfacing, 2 buttons.

Seam allowances: on hem – 3.0 cm, upper edge of pocket – 3.5 cm, other seams – 1 cm.

Note on seam allowances:

- If the pattern has double contour the seam allowances are included. They are 1 cm unless specified otherwise.

- If the pattern has single contour, the seam allowances are NOT included and need to be added when laying out the pattern.

Note on length of fabric:

Attention! The amount of fabric needed for your pattern is not included. It will depend on the selected pattern size, the width, and design of the fabric you plan to use. First, print all the paper patterns and lay them out at the width of fabric you plan to use (usually from 90 to 150 cm). Measure how much fabric you will need. Don't forget to account for pieces that need to be cut multiple times and pieces that are cut on the fold.



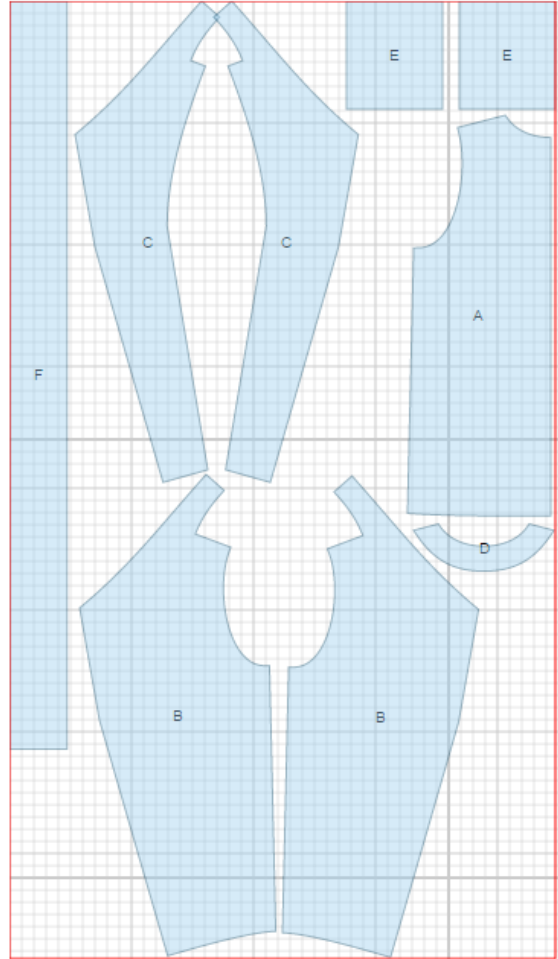
CUTTING:

Main fabric:

1. Back - cut 1 on fold (A)
2. Front – cut 2 (B)
3. Front facing – cut 2 (C)
4. Back neck facing - cut 1 (D)
5. Pocket - cut 2 (E)
6. Belt - cut 1 (F)

Fusible interfacing:

1. Front facing - cut 2 (C)
2. Back neck facing - cut 1 (D)



INSTRUCTIONS:

1. Apply interfacing to listed pieces.
2. Apply fusible interfacing to upper edge of pocket, press under at 1 cm. Turn seam allowances of upper edge to right side and sew on side edges. Turn right side out, straighten corners. Press side and lower allowances to wrong side. Topstitch upper edge at 2.5 cm. Topstitch pocket on front according to marking.
3. Clip into seam allowance in corner of front shoulder seam. Sew shoulder seams. Serge and press seams towards back.
4. Sew center collar seam of fronts. Press seam open. Sew outer collar into back neckline. Grade and press seam open.
5. Clip into seam allowance in corner of front facing shoulder seam. Sew shoulder seams of back neck facing and front facing. Press seams open. Sew center collar seam of front facings, press seam open. Sew inner collar into neck facing. Press seam open. Serge outer edge of front facing.
6. Pin front facing to front, right sides together, and sew along center front, lapel, and collar. Sew lower edges of front facings to fronts exactly on hem turn-up line, leaving 1.5 cm to inner edge of front facing. Trim seams in corners, clip on curves. Turn front facing to inside and press. Topstitch at 0.7 cm from the edge along center front, lapel, and collar.
7. Sew and press open side seams.
8. Cut a bias tape of 4 cm wide. Length is equal to the length of armhole + 5 cm. Fold bias tape in half lengthwise right side out and press. Place bias tape to right side of armhole and sew. Clip into seam. Turn bias tape to wrong side and topstitch along the fold. Press seam.
9. Serge lower edge of garment, turn under, press and topstitch. Fasten allowances of collars connecting seams close to seams.
10. Make a buttonhole on right front. Sew button on left front. Make inner buttonhole on left front and sew a button.
11. Fold belt in half lengthwise, right sides together, and sew on long and one short side. Turn belt right side out, turn unsewn edges under, and topstitch at 0.7 cm from the edge on all four sides.

TECHNICAL DRAWING:

