

Recommendations on fabric: natural or mixed heavy-weight, low stretch-knit fabric.

You will also need: fusible interfacing.

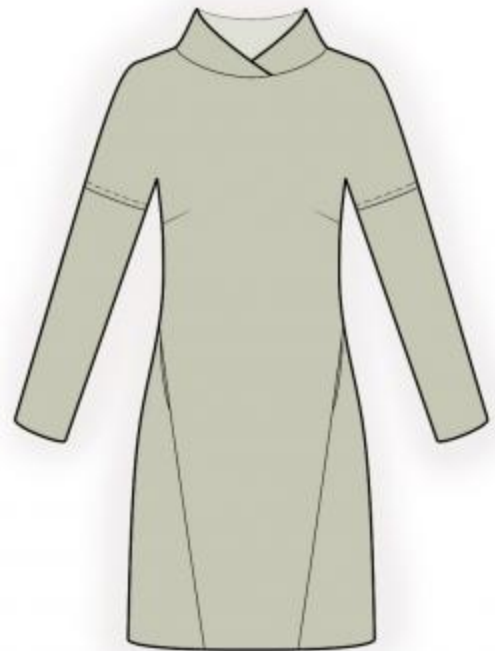
Seam allowances: lower dress/sleeve edge – 2.0 cm, other seams – 1.0 cm.

Note on seam allowances:

- If the pattern has double contour the seam allowances are included. They are 1 cm unless specified otherwise.
- If the pattern has single contour, the seam allowances are NOT included and need to be added when laying out the pattern.

Note on length of fabric:

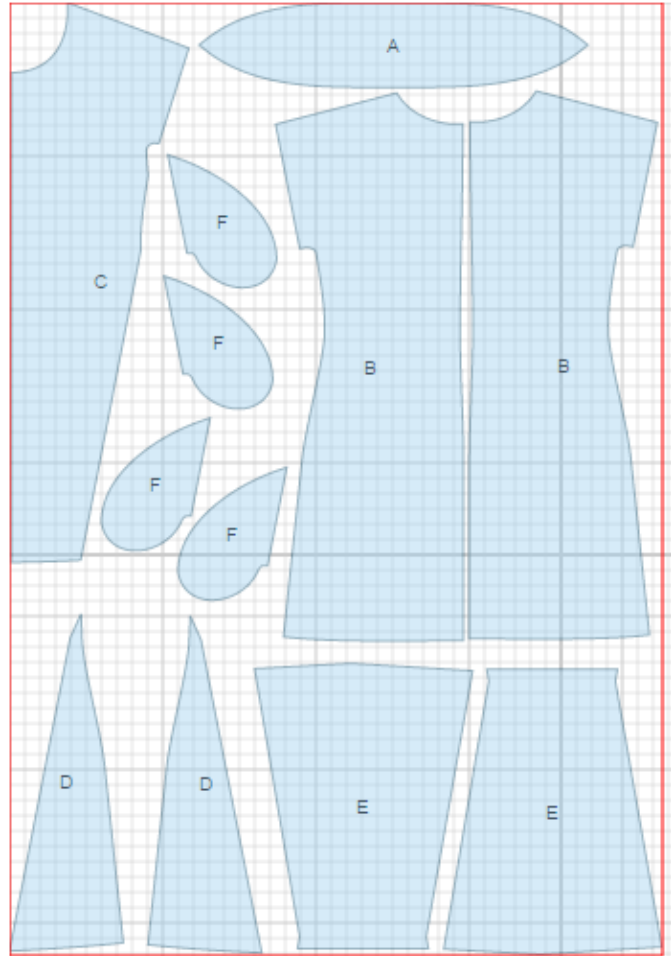
Attention! The amount of fabric needed for your pattern is not included. It will depend on the selected pattern size, the width, and design of the fabric you plan to use. First, print all the paper patterns and lay them out at the width of fabric you plan to use (usually from 90 to 150 cm). Measure how much fabric you will need. Don't forget to account for pieces that need to be cut multiple times and pieces that are cut on the fold.



CUTTING:

Main fabric:

1. Collar - cut 1 (A)
2. Back - cut 2 (B)
3. Center front - cut 1 on fold (C)
4. Side front - cut 2 (D)
5. Sleeve - cut 2 (E)
6. Pocket bag - cut 4 (F)



Advice: Knit fabric pieces are sewn together with special elastic or narrow zig-zag stitch. Seam allowance on hem is stitched with twin needles to save stretchiness. Pieces can also be sewn together with 3 or 4 – thread serger. When serging, cut seam allowances to 0.6 – 0.8 cm.

INSTRUCTIONS:

1. Apply fusible interfacing to collar.
2. Sew center back seam. Serge and press seam towards left side.
3. Sew darts on front, press bulk downwards.
4. Sew pocket bags to center and side fronts. Serge seam allowances. Sew side fronts to center front, sewing along outer edges of pocket bags. Clip into seam on side fronts near the pocket opening. Serge and press seams towards center.
5. Sew shoulder seams. Serge and press seam towards back.
6. Fold collar in half along center line, right side out. Lay right end over left end and sew collar into neckline. Serge and press seam.
7. Sew sleeve into armhole, serge and press seam towards sleeve. Topstitch along seam.
8. Sew side and sleeve seam with one continuous stitch. Serge and press seams.
9. Serge lower edge of dress and lower edge of sleeve, turn under and topstitch.

TECHNICAL DRAWING:

