

Recommendations on fabric: well-draping natural or mixed suiting fabrics.

You will also need: fusible interfacing, invisible zipper.

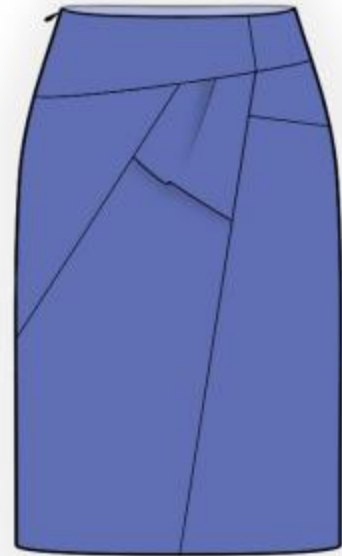
Seam allowances: hem – 2.0 cm, other seams – 1.0 cm.

Note on seam allowances:

- If the pattern has double contour the seam allowances are included. They are 1 cm unless specified otherwise.
- If the pattern has single contour, the seam allowances are NOT included and need to be added when laying out the pattern.

Note on length of fabric:

Attention! The amount of fabric needed for your pattern is not included. It will depend on the selected pattern size, the width, and design of the fabric you plan to use. First, print all the paper patterns and lay them out at the width of fabric you plan to use (usually from 90 to 150 cm). Measure how much fabric you will need. Don't forget to account for pieces that need to be cut multiple times and pieces that are cut on the fold.



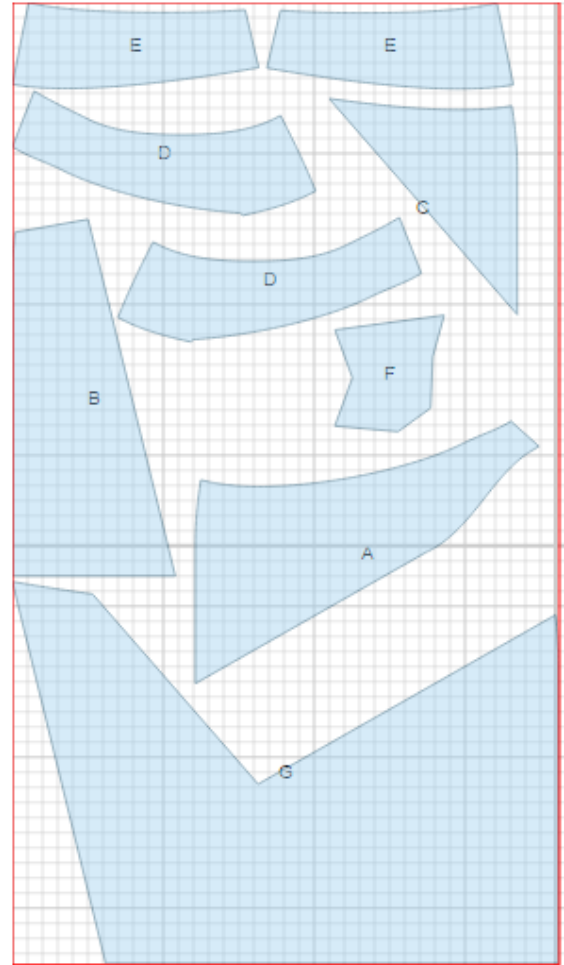
CUTTING:

Main fabric:

1. Upper back – cut 1 (A)
2. Lower front - cut 1 (B)
3. Upper front - cut 1 (C)
4. Back yoke/facing - cut 2 (D)
5. Front yoke/facing - cut 2 (E)
6. Bow - cut 1 (F)
7. Side-lower back skirt - cut 1 (G)

Fusible interfacing:

1. Back facing - cut 1 (D)
2. Front facing - cut 1 (E)



INSTRUCTIONS:

1. Apply fusible interfacing to yoke facings.
2. Sew dart on back, press bulk towards center. Sew back yoker to upper back. Serge and press seam towards yoke.
3. Serge lower edge of bow. Turn under and topstitch. Make a pleat on bow. Pin bow to side skirt and then treat as one piece.
4. Sew left side seam. Serge edges, and press seam open.
5. Sew upper front to front yoke. Press seam towards yoke. Serge right side edges separately on each piece. Sew seam from mark to lower edge. Press seam open, pressing slit for zipper. Sew in zipper.

6. Sew upper and lower parts of skirt. Serge and press seams.
7. Sew front cross seam. Serge and press seam open.
8. Sew and press open left side seam of yoke facings. Serge outer edge. Pin yoke facing to skirt, right sides together and sew upper edge. Turn facings to wrong side and press. Turn side edges under and tack to zipper tape. Topstitch yoke facing into connecting seam.
9. Serge lower edge of skirt. Turn under and slipstitch.

TECHNICAL DRAWING:

