

Recommendations on fabric: medium stretch-knit, natural or mixed dress fabric.

You will also need: fusible interfacing, decorative buttons.

Seam allowances: hem – 1.5 cm, other seams – 0.7 cm.

Note on seam allowances:

- If the pattern has double contour the seam allowances are included. They are 1 cm unless specified otherwise.

- If the pattern has single contour, the seam allowances are NOT included and need to be added when laying out the pattern.

Note on length of fabric:

Attention! The amount of fabric needed for your pattern is not included. It will depend on the selected pattern size, the width, and design of the fabric you plan to use. First, print all the paper patterns and lay them out at the width of fabric you plan to use (usually from 90 to 150 cm). Measure how much fabric you will need. Don't forget to account for pieces that need to be cut multiple times and pieces that are cut on the fold.



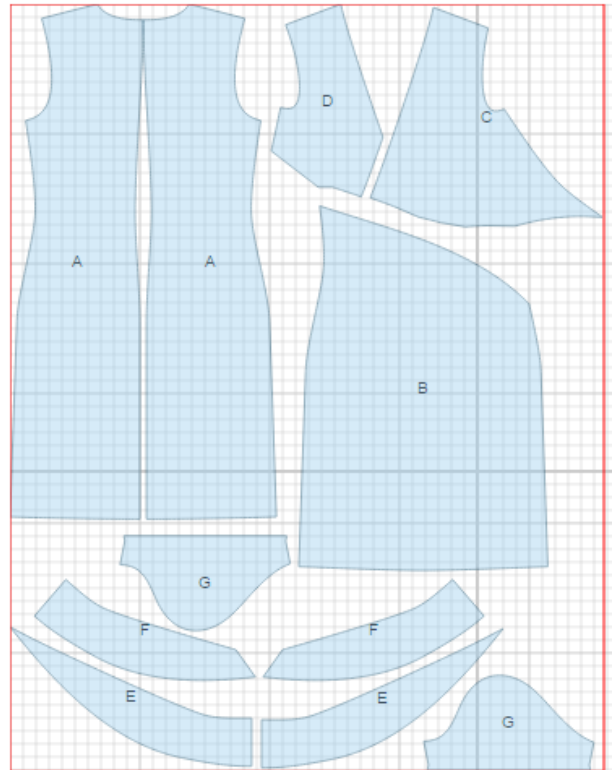
CUTTING:

Main fabric:

1. Back - cut 2 (A)
2. Lower front - cut 1 (B)
3. Upper left front - cut 1 (C)
4. Upper right front - cut 1 (D)
5. Left collar - cut 2 (E)
6. Right collar - cut 2 (F)
7. Sleeve - cut 2 (G)

Fusible interfacing:

1. Left collar - cut 1 (E)
2. Right collar - cut 1 (F)



Advice: Knit fabric pieces are sewn together with special elastic or narrow zig-zag stitch. Seam allowance on hem is stitched with twin needles to save stretchiness. Pieces can also be sewn together with 3 or 4 – thread serger. When serging, cut seam allowances to 0.6 – 0.8 cm.

INSTRUCTIONS:

1. Apply fusible interfacing to collar pieces.
2. Sew center back seam. Serge and press seam towards left side.
3. Sew bust dart on upper left front, cut bulk off with serger if desired. Make and sew pleats according to marking on upper right front. Pleat folds are directed towards side seam.
4. Sew shoulder seams. Serge and press towards back.
5. Sew center seams of collars. Place collar pieces right sides together and sew on outer edge. Turn collar right side out, press.
6. Pin collar to wrong side of dress and sew left part on neckline to center back. Serge seam. Turn left end to right side and attach to center front edge. Insert left front between right front and collar and sew the rest of collar from center back to waist. Serge seam.
7. Sew upper front to lower front, serge and press seam downwards.
8. Serge lower edge of sleeve, fold to wrong side, press and topstitch. Sew sleeve into open armhole, serge and press seam.
9. Sew sleeve and side seams, serge and press seams towards back.
10. Serge lower edge of dress, fold to wrong side, press and topstitch.
11. Sew decorative buttons on upper right front.

TECHNICAL DRAWING:

