

Recommendations on fabric: Natural/mixed double-sided, non-fraying fabric suitable for coats.

You will also need: lining; 4 snaps; fusible interfacing.

Seam allowances: on neckline, hems, front facing edge - 0.5 cm, all other seams - 1 cm.

Note on seam allowances:

- If the pattern has double contour the seam allowances are included. They are 1 cm unless specified otherwise.
- If the pattern has single contour, the seam allowances are NOT included and need to be added when laying out the pattern.

Note on length of fabric:

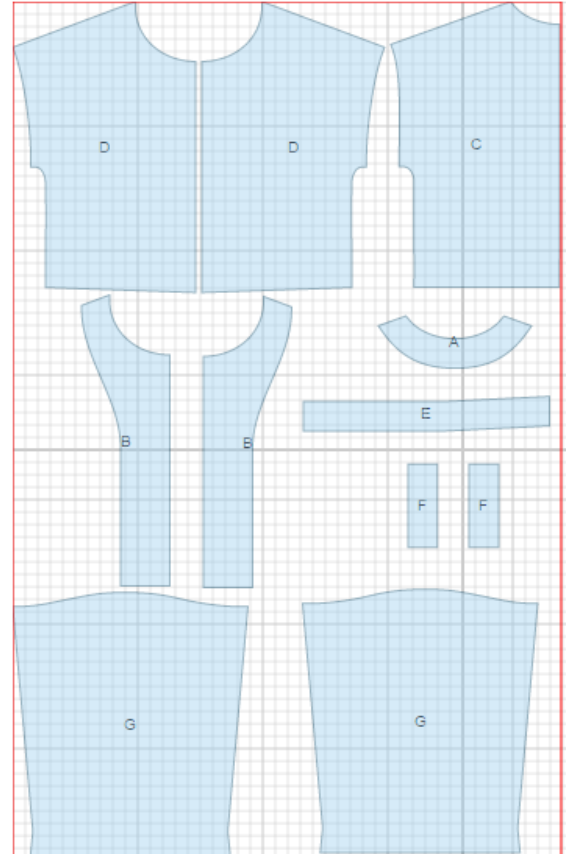
Attention! The amount of fabric needed for your pattern is not included. It will depend on the selected pattern size, the width, and design of the fabric you plan to use. First, print all the paper patterns and lay them out at the width of fabric you plan to use (usually from 90 to 150 cm). Measure how much fabric you will need. Don't forget to account for pieces that need to be cut multiple times and pieces that are cut on the fold.



CUTTING:

Main fabric:

1. Back neck facing - cut 1 (A)
2. Front facing – cut 2 (B)
3. Back – cut 1 on fold (C)
4. Front – cut 2 (D)
5. Lower placket - cut 1 on fold (E)
6. Off-set welt - cut 2 (F)
7. Sleeve – cut 2 (G)

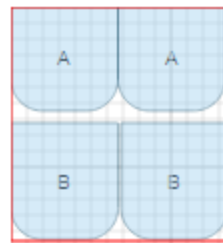


Fusible interfacing:

1. Back neck facing – cut 1 (A)
2. Front facing – cut 2 (B)
3. Lower placket - cut 1 (E)
4. Off-set welt - cut 2 (F)

Lining:

1. Small pocket bag – cut 2 (A)
2. Large pocket bag – cut 2 (B)



INSTRUCTIONS:

1. Apply fusible interfacing to listed pieces.
2. Fold off-set welt in half and press. Mark pocket location on fronts. Mark supportive lines on off-set welt. Mark supportive lines parallel to pocket opening. Sew off-set welt to front. End stitch at parallel lines of pocket marking. Stitches must be parallel from wrong side. Cut pocket opening. Make cross cuts at 1 - 1.5 cm from pocket end. Turn welt to wrong side through the opening, straighten edges. Sew pocket bags. Fasten pocket ends from wrong side with double back stitch on corner section and continuing stitch on pocket bags edges.
3. Sew shoulder seams. Press open.
4. Sew sleeve into open armhole. Press seam open. Press sleeve cuff to right side and topstitch. Sew side and sleeve seam. Press open.
5. Sew shoulder seams of front band facing and facing. Press seam open. Sew lower placket to front facing. Place front facing with placket and neck facing on front, right sides together (if you are using double sided fabric, you may choose to use the contrasting side), and sew with 0.5 cm seam.
6. Install snaps.

TECHNICAL DRAWING:

