

Recommendations on fabric: sheepskin.

You will also need: separating zipper, leather tape.

Seam allowances: lower edge of back, front, collar and sleeve plackets - 0 cm, center seam of front placket - 0 cm, left side of collar - 0 cm, other seams - 1 cm.

**Note on seam allowances:**

- If the pattern has double contour the seam allowances are included. They are 1 cm unless specified otherwise.
- If the pattern has single contour, the seam allowances are NOT included and need to be added when laying out the pattern.

**Note on length of fabric:**

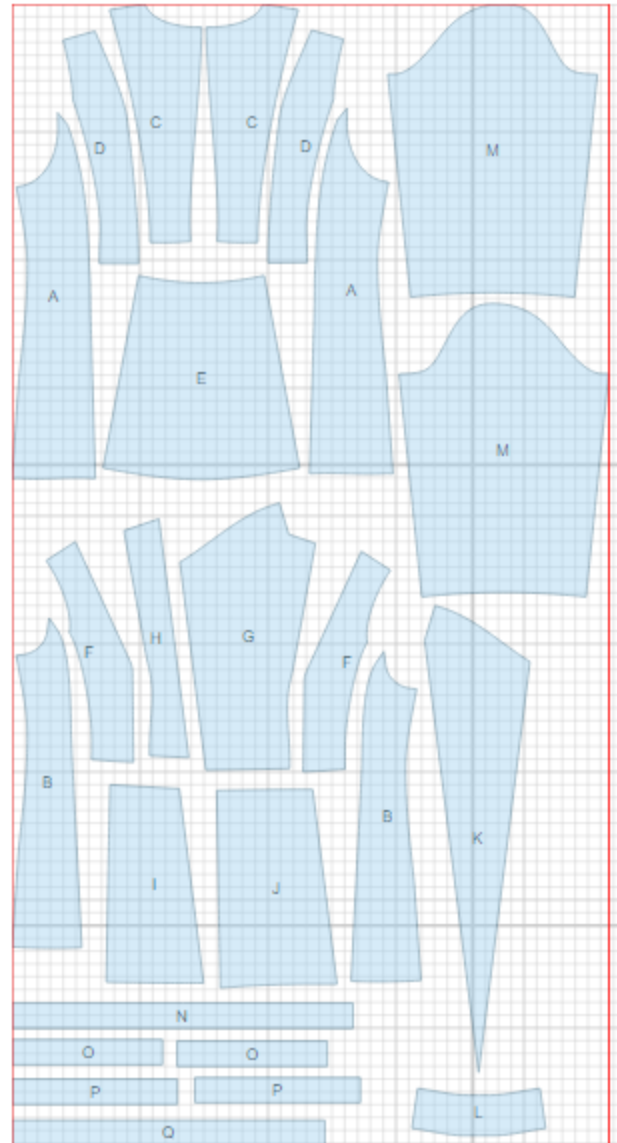
*Attention! The amount of fabric needed for your pattern is not included. It will depend on the selected pattern size, the width, and design of the fabric you plan to use. First, print all the paper patterns and lay them out at the width of fabric you plan to use (usually from 90 to 150 cm). Measure how much fabric you will need. Don't forget to account for pieces that need to be cut multiple times and pieces that are cut on the fold.*



## CUTTING:

### Main fabric:

1. Side back – cut 2 ( A )
2. Side front – cut 2 ( B )
3. Center upper back – cut 2 ( C )
4. Middle upper back - cut 2 ( D )
5. Lower back– cut 1 ( E )
6. Middle upper front — cut 2 ( F )
7. Center upper right front — cut 1 ( G )
8. Center upper left front - cut 1 ( H )
9. Lower left front - cut 1 ( I )
10. Lower right front - cut 1 ( J )
11. Left front band facing – cut 1 ( K )
12. Collar - cut 1 ( L )
13. Sleeve - cut 2 ( M )
14. Back placket - cut 1 ( N )
15. Front placket - cut 2 ( O )
16. Sleeve placket - cut 2 ( P )
17. Collar placket - cut 1 ( Q )



---

**INSTRUCTIONS:**

1. Sew center and middle upper backs. Sew center back seam. Sew lower back to upper back. Sew side backs to back piece. Sew collar in to neckline.
2. Right front: sew center upper front to middle upper front. Sew upper and lower fronts. Sew side front to the piece.
3. Left front: sew center upper front to middle upper front. Sew upper and lower fronts. Sew side front to the piece. Sew left front band facing to front inserting left tape of zipper between pieces.
4. Sew shoulder seams and collar seam. Sew collar placket.
5. Lay right part of zipper on right front right sides together, so that zipper blades match marked seam line (zipper tape lies on seam allowance) and baste. Turn short edges of leather tape to wrong side, place tape on front right sides together, pin and sew, catching zipper. Turn tape to wrong side, turn open edge under and topstitch at 0.7 cm from front band edge and along tape edge.
6. Sew sleeves into open armholes matching notches. Sew placket to hem of sleeve placing fur side of placket on leather side of sleeve. Sew sleeve and side seams.
7. Sew side seams of back and front plackets fur side together. Sew placket to hem of coat placing fur side of placket to leather side of coat.

TECHNICAL DRAWING:

