

Recommendations on fabric: well draping natural or mixed suiting fabrics.

You will also need: fusible interfacing, invisible zipper, a button.

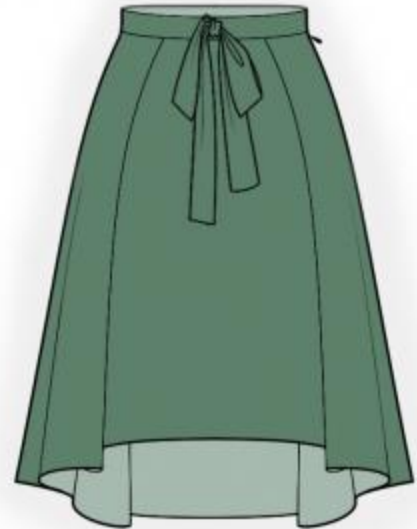
Seam allowances: hem – 2.0 cm, other seams – 1.0 cm.

Note on seam allowances:

- If the pattern has double contour the seam allowances are included. They are 1 cm unless specified otherwise.
- If the pattern has single contour, the seam allowances are NOT included and need to be added when laying out the pattern.

Note on length of fabric:

Attention! The amount of fabric needed for your pattern is not included. It will depend on the selected pattern size, the width, and design of the fabric you plan to use. First, print all the paper patterns and lay them out at the width of fabric you plan to use (usually from 90 to 150 cm). Measure how much fabric you will need. Don't forget to account for pieces that need to be cut multiple times and pieces that are cut on the fold.



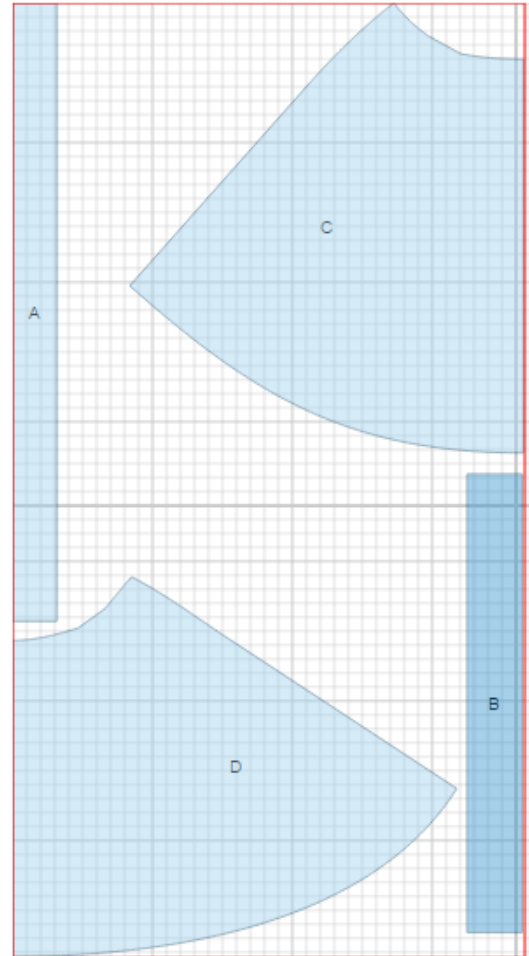
CUTTING:

Main fabric:

1. Decorative bow – cut 1 (A)
2. Waistband - cut 1 (B)
3. Back skirt - cut 1 on fold (C)
4. Front skirt - cut 1 on fold (D)

Fusible interfacing:

1. Waistband - cut 1 (B)



INSTRUCTIONS:

1. Apply fusible interfacing to waistband.
2. Sew right side seam. Press seam open.
3. Sew left side seam from zipper notch down to hem. Press seam open. Sew in zipper.
4. Make and fasten pleats on front and back skirt. Folds are directed towards sides. Sew outer side of waistband to upper edge of skirt. Back left side will extend slightly for button. Stitch ends of waistband, trim seams in corner and turn out. Turn inner edge under, and topstitch into connecting seam. Press.
5. Serge lower edge of of skirt, turn under and topstitch.

6. Fold bow in half lengthwise and stitch on contour leaving an opening. Trim seam in corners. Turn right side out. Sew opening closed. Press. Tie a bow and stitch onto front waistband.

7. Mark and make a buttonhole on waistband. Sew a button.

TECHNICAL DRAWING:

