

Recommendations on fabric: natural or mixed fabric suitable for jackets.

You will also need: lining, 5 buttons, fusible interfacing, 4 metal zippers of 15 cm.

Seam allowances: on slanting edges of side front and front inserts – 1.5 cm, hem of sleeve – 3 cm, other seams – 1 cm.

Note on seam allowances:

- If the pattern has double contour the seam allowances are included. They are 1 cm unless specified otherwise.
- If the pattern has single contour, the seam allowances are NOT included and need to be added when laying out the pattern.

Note on length of fabric:

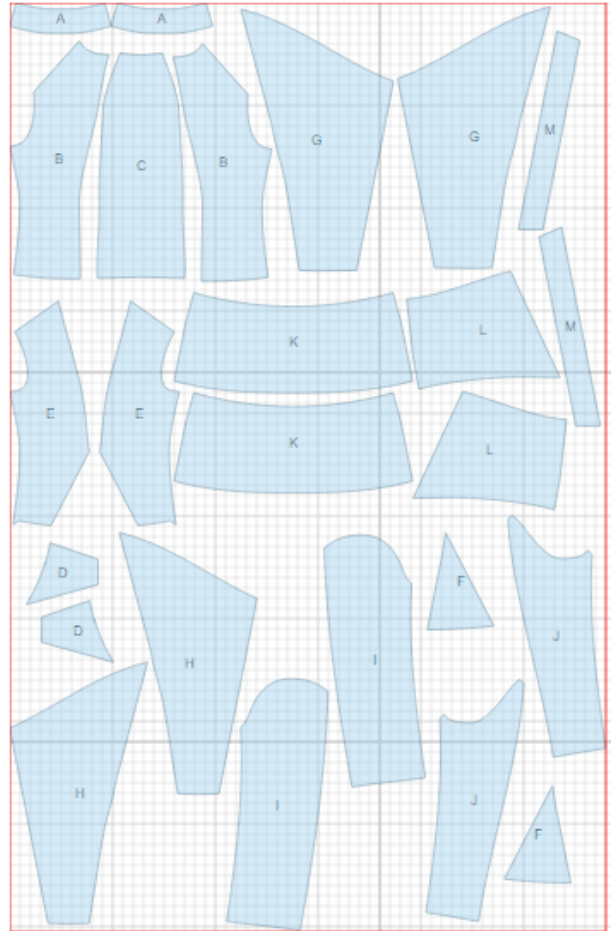
Attention! The amount of fabric needed for your pattern is not included. It will depend on the selected pattern size, the width, and design of the fabric you plan to use. First, print all the paper patterns and lay them out at the width of fabric you plan to use (usually from 90 to 150 cm). Measure how much fabric you will need. Don't forget to account for pieces that need to be cut multiple times and pieces that are cut on the fold.



CUTTING:

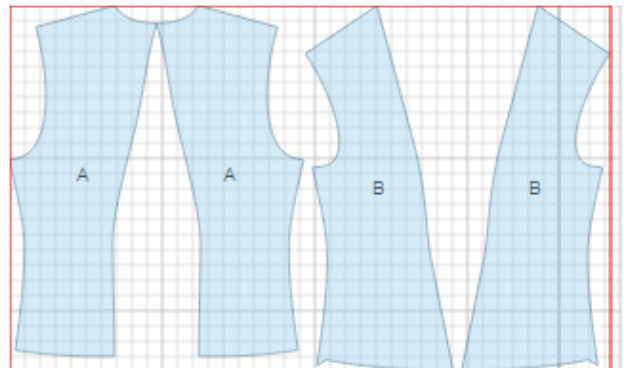
Main fabric:

1. Collar - cut 2 (A)
2. Side back – cut 2 (B)
3. Center back – cut 1 (C)
4. Back yoke - cut 2 (D)
5. Side front - cut 2 (E)
6. Front insert - cut 2 (F)
7. Center front - cut 2 (G)
8. Front band facing - cut 2 (H)
9. Upper sleeve – cut 2 (I)
10. Lower sleeve – cut 2 (J)
11. Lower back - cut 2 (K)
12. Lower front - cut 4 (L)
13. Inner placket - cut 2 (M)



Lining:

1. Side front – cut 2 (B) - lower image*
2. Center back – cut (C)
3. Side back – cut 2 (A) - lower image*
4. Upper sleeve – cut 2 (I)
5. Lower sleeve – cut 2 (J)



*ATTENTION: Lining is cut using main fabric patterns except for side front and side back pieces.

Fusible interfacing:

1. Center front - cut 2 (G)
2. Collar - cut 1 (A)
3. Front band facing - cut 2 (H)
4. Inner placket - cut 2 (M)

INSTRUCTIONS:

1. Apply interfacing to listed pieces and to hem of jacket and sleeves.
2. Sew side backs to center backs. Press seams open. Sew lower back to back, press seam upwards. Sew outer collar into neckline, press seam towards collar.
3. Apply fusible interfacing to slanting edge of side front and front insert. Sew from outer edges to marks, press seam open, lay zipper under seam allowances and topstitch on contour.
4. Sew yoke to side front, press seam towards yoke. Sew side fronts to center fronts, press seams towards center. Sew lower front to front, press seam upwards.
5. Sew side seams. Press open. Sew shoulder seams and collar seam, press seam open.
6. Sew elbow seam to mark and press open. Lay zipper under seam allowances and sew on three sides. Press hem of sleeve under. Sew and press open front sleeve seam.
7. Make a gathering stitch along sleeve cap to adjust ease. Sew sleeves into armholes matching notches and adjusting ease on sleeve cap. Press seams.
8. Sew inner placket to front band facing, press seam towards placket. Sew lining pieces, sew inner collar to neck of lining. Sew inner lower back and fronts together at side seams. Sew the lining to the waist edge of lower section. Leave an opening in left front seam. Sew lining to inner edges of front band facings.
9. Pin front band facing and front right sides together and sew to outer edge of front band, collar and along lower edge of garment. Trim seams in corners, clip on curves. Turn jacket right side out, straighten and press.
10. Sew lining to hem of sleeves. Slip stitch hem to zipper tape. Sew the opening in sleeve closed. Make a fastening stitch into collar connecting seam. Fasten jacket to lining on lower pieces connecting seam.
11. Make buttonholes on right front, sew buttons on left front.

TECHNICAL DRAWING:

