

1Recommendations on fabric: natural or mixed blouse fabric.

You will also need (for a sleeved variant): 2 buttons, invisible zipper.

Seam allowances: hem of dress – 2 cm, other seams – 1 cm.

Note on seam allowances:

- If the pattern has double contour the seam allowances are included. They are 1 cm unless specified otherwise.
- If the pattern has single contour, the seam allowances are NOT included and need to be added when laying out the pattern.

Note on length of fabric:

Attention! The amount of fabric needed for your pattern is not included. It will depend on the selected pattern size, the width, and design of the fabric you plan to use. First, print all the paper patterns and lay them out at the width of fabric you plan to use (usually from 90 to 150 cm). Measure how much fabric you will need. Don't forget to account for pieces that need to be cut multiple times and pieces that are cut on the fold.

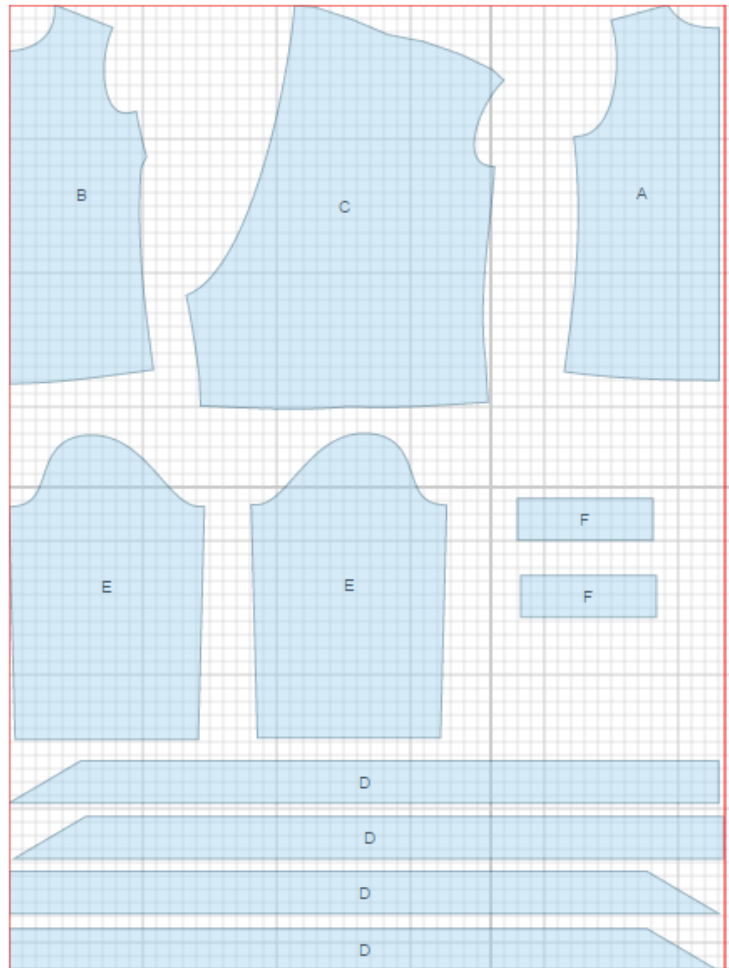
Note: You can choose a sleeved or a sleeveless variant to make a blouse.



CUTTING:

Main fabric:

1. Back - cut 1 on fold (A)
2. Front - cut 1 on fold (B)
3. Front Overlay - cut 1 (C)
4. Collar - cut 4 (D)
5. Sleeve - cut 2 (E)
6. Cuff - cut 2 (F)



Fusible interfacing:

1. Cuff - cut 2 (F)

INSTRUCTIONS:

1. Apply fusible interfacing to listed pieces.
2. Sew bust darts, press bulk upwards.
3. Cut a bias tape of 4 cm wide. Length is equal to fall front edge + 5 cm. Fold bias tape in half lengthwise right side out and press. Place bias tape with edge from right side and sew. Grade seam, turn right side out and topstitch along the fold onto main piece. Press seam.
4. Make and fasten pleats on front overlay: three pleats are directed from shoulder seam towards armhole, other pleats are directed towards neckline. Serge lower edge of front overlay..
5. Lay front overlay on front and baste on side and shoulder edges. Then treat as one piece.
6. Sew side and shoulder seams. Serge and press towards back.
7. Sew center seams of collars. Press seams open. Place collars right sides together and sew on contour leaving an opening between marks. Clip into front neck seam in center at mark. Sew outer collar into neckline. Turn inner collar edge under and topstitch into connecting seam.
8. Turn hem twice at 1 cm and topstitch.

For a sleeveless model:

1. Cut a bias tape of 4 cm wide. Length is equal to armhole + 5 cm. Fold bias tape in half lengthwise right side out and press. Place bias tape with edge from right side and sew. Grade seam, turn right side out and topstitch along the fold onto main piece. Press seam.

For a sleeved model:

1. Make a slit on sleeve according to marking. Cut a bias tape of 4 cm wide. Length is equal to double length of slit + 4 cm. Fold bias tape in half lengthwise and press. Press outer edges towards center. Finish slit with bias tape.
2. Sew sleeve seam, serge and press. Make a gathering stitch on lower edge of sleeves and gather fullness.
3. Make a gathering stitch on sleeve cap to adjust ease. Sew sleeves into armholes adjusting ease on sleeve caps. Serge and press seams.

4. Fold cuff in half lengthwise right sides together and sew on short edges. Start stitch exactly at marked line of cuff connection. Clip seams at mark, turn cuff out and press. Sew outer side of cuff to sleeve. Turn inner edge of cuff under and topstitch into connecting seam.

5. Make buttonholes on cuffs. Sew on buttons.

TECHNICAL DRAWING:

