

Recommendations on fabric: natural/mixed suiting fabric.

You will also need: fusible interfacing, lining; shoulder pads, sleeve heads, 1 button.

Seam allowances: 1 cm for all seams, 3 cm for garment hem.

Note on seam allowances:

- If the pattern has double contour the seam allowances are included. They are 1 cm unless specified otherwise.

- If the pattern has single contour, the seam allowances are NOT included and need to be added when laying out the pattern.

Note on length of fabric:

Attention! The amount of fabric needed for your pattern is not included. It will depend on the selected pattern size, the width, and design of the fabric you plan to use. First, print all the paper patterns and lay them out at the width of fabric you plan to use (usually from 90 to 150 cm). Measure how much fabric you will need. Don't forget to account for pieces that need to be cut multiple times and pieces that are cut on the fold.



CUTTING:

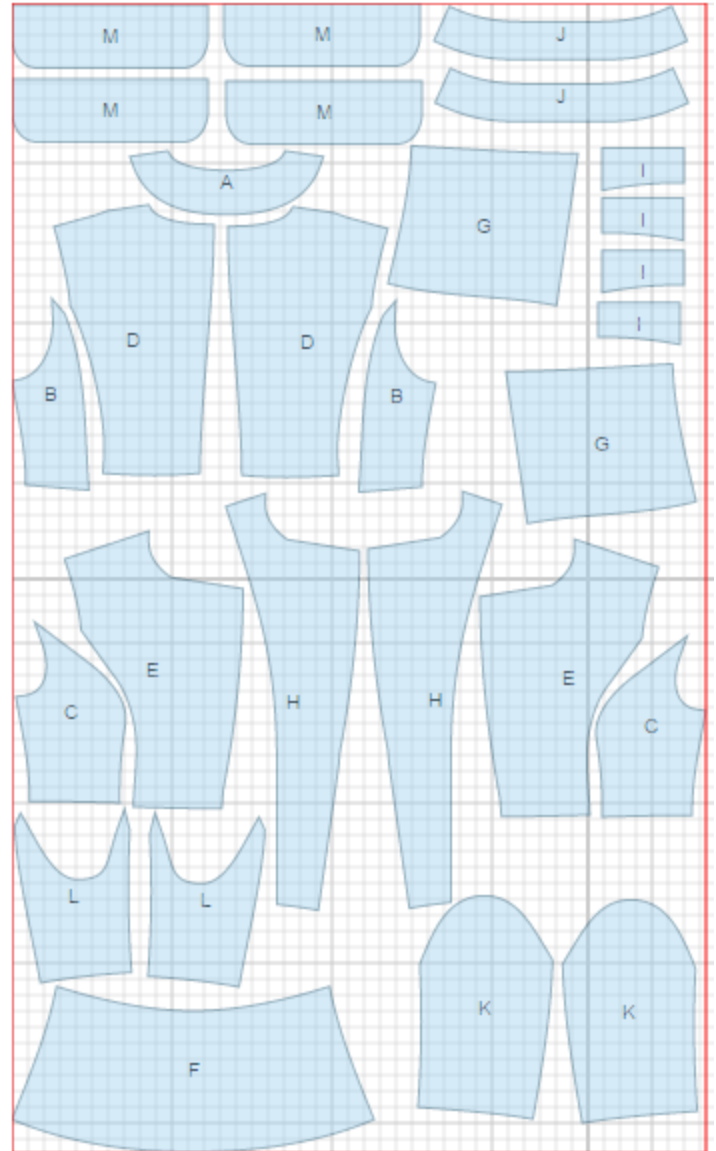
Main fabric:

1. Back neck facing - cut 1 (A)
2. Side back – cut 2 (B)
3. Side front – cut 2 (C)
4. Center back – cut 2 (D)
5. Center front - cut 2 (E)
6. Lower back - cut 1 (F)
7. Lower front - cut 2 (G)
8. Front facing - cut 2 (H)
9. Flap - cut 4 (I)
10. Stand-up collar - cut 2 (J)
11. Upper sleeve – cut 2 (K)
12. Lower sleeve – cut 2 (L)
13. Cuff - cut 4 (M)

Lining:

1. Center back – cut 2 (A)
2. Side back – cut 2 (B)
3. Center front - cut 2 (E)
4. Side front – cut 2 (E)
5. Upper sleeve – cut 2 (I)
6. Lower sleeve – cut 2 (J)
7. Lower back - cut 1 (F)
8. Lower front - cut 2 (G)

*ATTENTION: Lining is cut using main fabric patterns excluding the width of front band facing. Add a pleat on lining.



Fusible interfacing: center front, back neck facing, cuffs, front facing, outer collar.

INSTRUCTIONS:

1. Apply interfacing to listed pieces.
2. Sew darts on back. Press bulk towards center. Sew side backs to center backs. Press seams open. Sew center back seam, press seam open. Sew lower back to bodice, press seam upwards.
3. Place flaps right sides together and sew on three side. Clip seams, trim corners. Turn flaps right side out and press.
4. Sew side fronts to center fronts. Press seams towards center. Sew lower fronts to bodice pieces inserting flaps. Press seam upwards.
5. Sew side and shoulder seams. Press seams open.
6. Sew outer collar into neckline. Press seam open.
7. Sew elbow seam and press open. Sew and press open front sleeve seam. Clip into cuff seam allowance at the mark. Sew cuff edge from upper edges to marks. Press seam open. Place cuffs right sides together and sew outer edges. Grade seams. Turn cuff right side out and press. Sew outer cuff to sleeve. Press seam towards cuff. Make a gathering stitch along sleeve cap and gather fullness. Sew sleeves into armholes matching notches. Sew in sleeve heads and shoulder pads.
8. Sew lining pieces together leaving an opening in right front seam of sleeve. Sew shoulder seams of front facing and back neck facing. Press seams open. Sew lining to outer edges of front band facing/back neck facing. Sew inner collar to neck facing.
9. Place front facing and front right sides together, pin and sew along front band, lower edge of garment, and collar. Sew lining to seam of inside cuff. Turn jacket right side out through the opening in sleeve. Fasten inner and outer collar seams together. Fasten waist seams together. Sew opening in sleeve closed.
10. Make buttonhole on right front. Sew button on left front.

TECHNICAL DRAWING:

