

Recommendations on fabric: light-weight natural or mixed fabric suitable for blouses; lace. (Use finished edge of lace around neckline)

You will also need: two buttons.

Seam allowances: on hem - 2.0 cm, upper edges of lace pieces - 0 cm, hem of sleeve - 0 cm, other seams – 1.0 cm.

Note on seam allowances:

- If the pattern has double contour the seam allowances are included. They are 1 cm unless specified otherwise.
- If the pattern has single contour, the seam allowances are NOT included and need to be added when laying out the pattern.

Note on length of fabric:

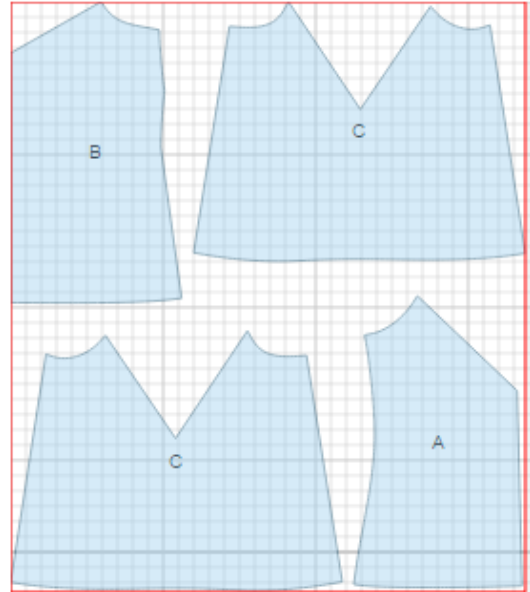
Attention! The amount of fabric needed for your pattern is not included. It will depend on the selected pattern size, the width, and design of the fabric you plan to use. First, print all the paper patterns and lay them out at the width of fabric you plan to use (usually from 90 to 150 cm). Measure how much fabric you will need. Don't forget to account for pieces that need to be cut multiple times and pieces that are cut on the fold.



CUTTING:

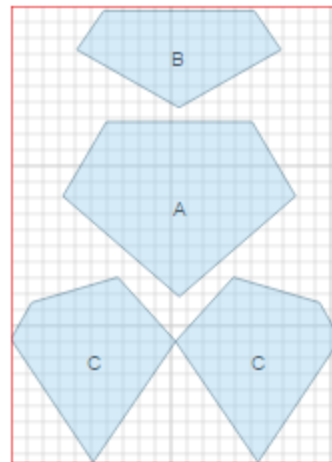
Main fabric:

1. Back – cut 1 on fold (A)
2. Front - cut 1 on fold (B)
3. Sleeve - cut 2 (C)



Lace:

1. Front yoke - cut 1 (B)
2. Back yoke - cut 1 (A)
3. Sleeve insert - cut 2 (C)



INSTRUCTIONS:

1. Sew back yoke to back. Serge and press seam downwards.
2. Sew darts on front. Press darts downwards. Sew front yoke to front. Serge and press seam downwards.
3. Make a slit on sleeve according to marking. Cut a bias tape from main fabric of 4 cm wide, length is equal to double slit length. Fold bias tape in half lengthwise and press. Press outer edges towards center. Finish sleeve slit with bias tape. Sew insert to sleeve. Serge and press seam downwards.
4. Sew sleeve into front/back armhole. Serge seam and press from sleeve.
5. Sew sleeve and side seam in one continuous stitch. Serge and press seams towards back.
6. Make a gathering stitch on hem of sleeve and gather fullness. Cut a bias tape of 2.5 cm wide and 5 cm long, for the button loop. Fold bias tape in half lengthwise right sides together and sew at 0.3 cm from the fold. Grade seam, turn right side out, straighten and adjust length. Sew loop to sleeve hem. Finish sleeve hem with bias tape.
7. Press hem of blouse under twice at 1 cm and topstitch.
8. Sew buttons on sleeves.

TECHNICAL DRAWING:

