

Recommendations on fabric: light-weight natural or mixed fabric suitable for blouses.

You will also need: fusible interfacing, two buttons.

Seam allowances: on hem - 2.0 cm, other seams – 1.0 cm.

Note on seam allowances:

- If the pattern has double contour the seam allowances are included. They are 1 cm unless specified otherwise.
- If the pattern has single contour, the seam allowances are NOT included and need to be added when laying out the pattern.

Note on length of fabric:

Attention! The amount of fabric needed for your pattern is not included. It will depend on the selected pattern size, the width, and design of the fabric you plan to use. First, print all the paper patterns and lay them out at the width of fabric you plan to use (usually from 90 to 150 cm). Measure how much fabric you will need. Don't forget to account for pieces that need to be cut multiple times and pieces that are cut on the fold.



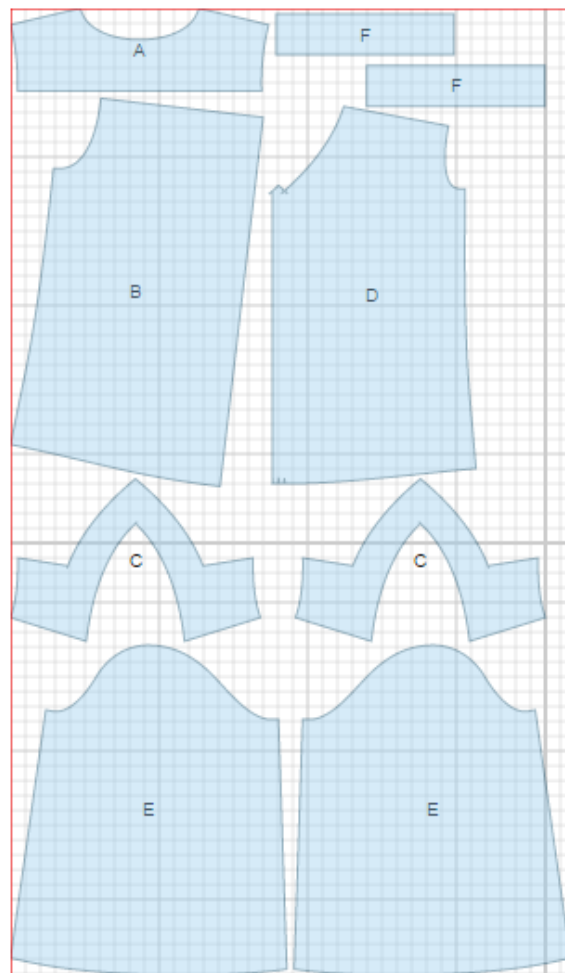
CUTTING:

Main fabric:

1. Back yoke – cut 2 (A)
2. Back - cut 1 on fold (B)
3. Front yoke - cut 2 (C)
4. Front - cut 1 on fold (D)
5. Sleeve - cut 2 (E)
6. Cuff - cut 2 (F)

Fusible interfacing:

1. Cuff - cut 2 (F)
2. Front yoke - cut 1 (C)



INSTRUCTIONS:

1. Apply fusible interfacing to listed pieces.
2. Make a gathering stitch on back between marks and gather fullness. Sew back yoke to back, press seam towards yoke.
3. Make and fasten inverted pleat on front. Make a gathering stitch on front upper edge and gather fullness. Sew front yoke to front. Clip into corners, press seam towards yoke.
4. Sew shoulder seams. Press open.
5. Sew shoulder seams of inner yokes, press open. Place inner yoke with front, right sides together, and sew along neckline. Clip seam on curves, turn inner yoke under, and press. Press edges of inner yoke under, and topstitch into outer yoke connecting seam.
6. Make a slit on sleeve according to marking. Cut a bias tape from main fabric of 4 cm wide, length is equal to double slit length. Fold bias tape in half lengthwise and press. Press outer edges towards center. Finish sleeve slit with bias tape.
7. Sew sleeves into open armholes. Serge and press seams towards sleeves.
8. Sew sleeve and side seam with one continuous stitch.. Serge and press seams towards back.
9. Make a gathering stitch on hem of sleeves and gather fullness.
10. Fold cuff in half along center line, right sides together and sew short edges, starting exactly at marked line of cuff connection. Clip into seam at marks. Turn cuff right side out and press. Sew outer cuff to sleeve. Turn edge of inner cuff under and topstitch into outer cuff connecting seam.
11. Press hem of blouse twice under at 1 cm and topstitch.
12. Make buttonholes on sleeves. Sew buttons.

TECHNICAL DRAWING:

