

Recommendations on fabric: suiting or mid-weight natural or mixed dress fabric.

You will also need: 2 buttons, fusible interfacing, lining.

Seam allowances: hem of dress – 2.0 cm, along vent edge – 6 cm, other seams – 1 cm.

Note on seam allowances:

- If the pattern has double contour the seam allowances are included. They are 1 cm unless specified otherwise.

- If the pattern has single contour, the seam allowances are NOT included and need to be added when laying out the pattern.

Note on length of fabric:

Attention! The amount of fabric needed for your pattern is not included. It will depend on the selected pattern size, the width, and design of the fabric you plan to use. First, print all the paper patterns and lay them out at the width of fabric you plan to use (usually from 90 to 150 cm). Measure how much fabric you will need. Don't forget to account for pieces that need to be cut multiple times and pieces that are cut on the fold.



CUTTING:

Main fabric::

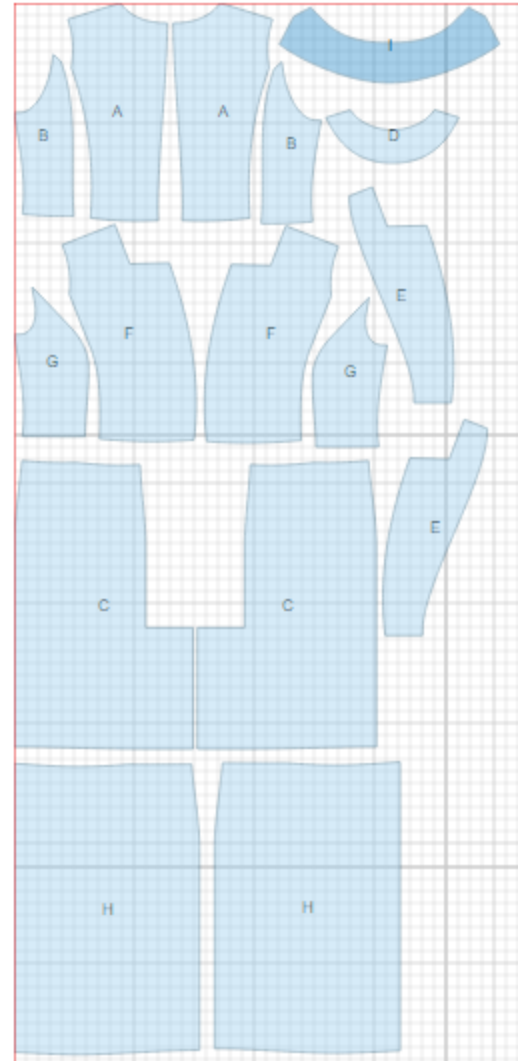
1. Center back bodice – cut 2 (A)
2. Side back bodice – cut 2 (B)
3. Side front bodice - cut 2 (G)
4. Center front bodice - cut 2 (F)
5. Front skirt- cut 2 (H)
6. Back skirt - cut 2 (C)
7. Collar - cut 2 (I)
8. Center front facing - cut 2 (E)
9. Back neck facing - cut 1 (D)

Lining:

1. Center back bodice – cut 2 (A)
2. Side back bodice – cut 2 (B)
3. Side front bodice - cut 2 (G)
4. Center front bodice - cut (F)

Fusible interfacing:

1. Center front facing - cut 2 (E)
2. Back neck facing - cut 1 (D)



INSTRUCTIONS:

1. Apply fusible interfacing to listed pieces.
2. Sew side back bodice to center back bodice, press seams open. Sew center back seam on bodice, press seam open.
3. Sew side front bodice to center front bodice. Press seams open.
4. Sew shoulder and side seams of the bodice. Press seams open.
5. Sew outer collar into neckline. Press seam open.
6. Sew shoulder seam of front facing and back neck facing. Press seam open.
7. Sew darts on back skirt, press towards center. On left lower back, along vertical vent edge, cut off 5 cm. Apply fusible interfacing to wrong side of the vent on both back pieces. On right side, mark center seam line (vent fold-line). Press left side along vent fold line. On right side press vent under (6 cm). Match backs on center seam and fasten on upper edge of vent. Serge vent allowances. Sew center back seam to vent corner. Trim corner of vent seam allowance on right side. Serge edges and press center seam open, press vent allowances and fasten them on right side with machine stitch.
8. Sew darts on front skirts, press darts towards center. Sew side seams of skirt. Serge and press seams open. Serge edge of self-facing on skirt fronts. Sew lining together. Sew lining to back neck facing and to front facing. Sew inner collar into neckline of lining.
9. Sew collars and center front to lining. Sew neck seam allowances together. Turn lining to wrong side and press. Baste lining and bodice along waist edge and then treat as one piece. Sew armholes with lining in two steps: first front, then back armhole.
10. Serge lower edge of bodice and upper edge of skirt. Sew skirt to bodice folding the self-facing of front skirt under. Buttonholes are in waist seam. Leave waist seam open between buttonhole marks. Fasten seam near these marks. Serge and press seam downwards.
11. Serge hem of dress, press to wrong side and topstitch.
12. Sew on buttons.

TECHNICAL DRAWING:

