

Recommendations on fabric: light to mid weight natural or mixed fabric suitable for blouses.

You will also need: fusible interfacing, trimming of 4 cm wide (length is shown on front pattern piece).

Seam allowances: on hem, hem of sleeve - 1.5 cm, other seams – 1.0 cm.

**Note on seam allowances:**

- If the pattern has double contour the seam allowances are included. They are 1 cm unless specified otherwise.
- If the pattern has single contour, the seam allowances are NOT included and need to be added when laying out the pattern.

**Note on length of fabric:**

Attention! The amount of fabric needed for your pattern is not included. It will depend on the selected pattern size, the width, and design of the fabric you plan to use. First, print all the paper patterns and lay them out at the width of fabric you plan to use (usually from 90 to 150 cm). Measure how much fabric you will need. Don't forget to account for pieces that need to be cut multiple times and pieces that are cut on the fold.



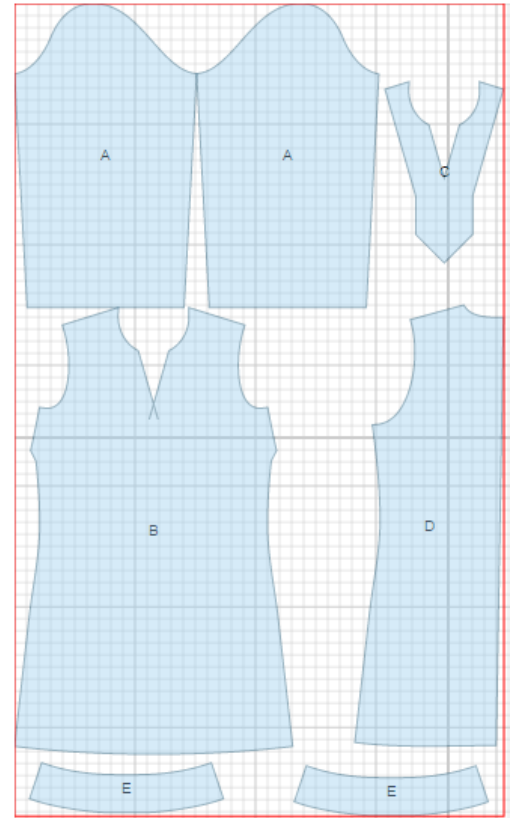
## CUTTING:

### Main fabric:

1. Back – cut 1 on fold (D)
2. Front - cut 1 (B)
3. Sleeve - cut 2 (A)
4. Stand collar - cut 2 (E)
5. Front neck facing - cut 1 (C)

### Fusible interfacing:

1. Front neck facing - cut 1 (C)
2. Stand-up collar - cut 1 (E)



## INSTRUCTIONS:

1. Apply fusible interfacing to facings and outer stand-up collar.
2. Sew bust darts, press downwards.
3. Sew shoulder seams, serge and press towards back. Sew side seams from armhole to trim mark. Press seams open and serge. Topstitch seam allowances along slit at 0.5 cm from the edge.
4. Serge outer edge of neck facing. Pin facing to blouse right sides together and sew to neckline edge. Start and finish stitch exactly at marked line. Clip seam in corner and turn facing to wrong side, press.
5. Place stand-up collars right sides together and sew outer seam. Clip seam in corners, turn collar right side out and press.

6. Sew collar into front neckline placing it between front and facing. Sew outer collar into front neckline, clip into collar seam allowance at shoulder seam, sew collar into back neckline. Turn the edge of inner collar under and topstitch into connecting seam.

7. Sew sleeve seam. Serge and press seam towards back. Serge hem of sleeve, turn under and topstitch. Make a gathering stitch along sleeve cap to adjust ease. Sew sleeves into armholes adjusting ease on sleeve cap. Serge seam.

8. Serge hem of tunic, turn under and topstitch. Topstitch trimming tape at 1 cm from the edge, according to technical drawing. Topstitch trimming tape on front through, catching facing.

**TECHNICAL DRAWING:**

