

Recommendations on fabric: natural or mixed dress fabric, denim.

You will also need: fusible interfacing, invisible zipper, 4 buttons.

Seam allowances: hem of dress and hem of sleeve - 2.0 cm, other seams - 1.0 cm

**Note on seam allowances:**

- If the pattern has double contour the seam allowances are included. They are 1 cm unless specified otherwise.
- If the pattern has single contour, the seam allowances are NOT included and need to be added when laying out the pattern.



**Note on length of fabric:**

Attention! The amount of fabric needed for your pattern is not included. It will depend on the selected pattern size, the width, and design of the fabric you plan to use. First, print all the paper patterns and lay them out at the width of fabric you plan to use (usually from 90 to 150 cm). Measure how much fabric you will need. Don't forget to account for pieces that need to be cut multiple times and pieces that are cut on the fold.

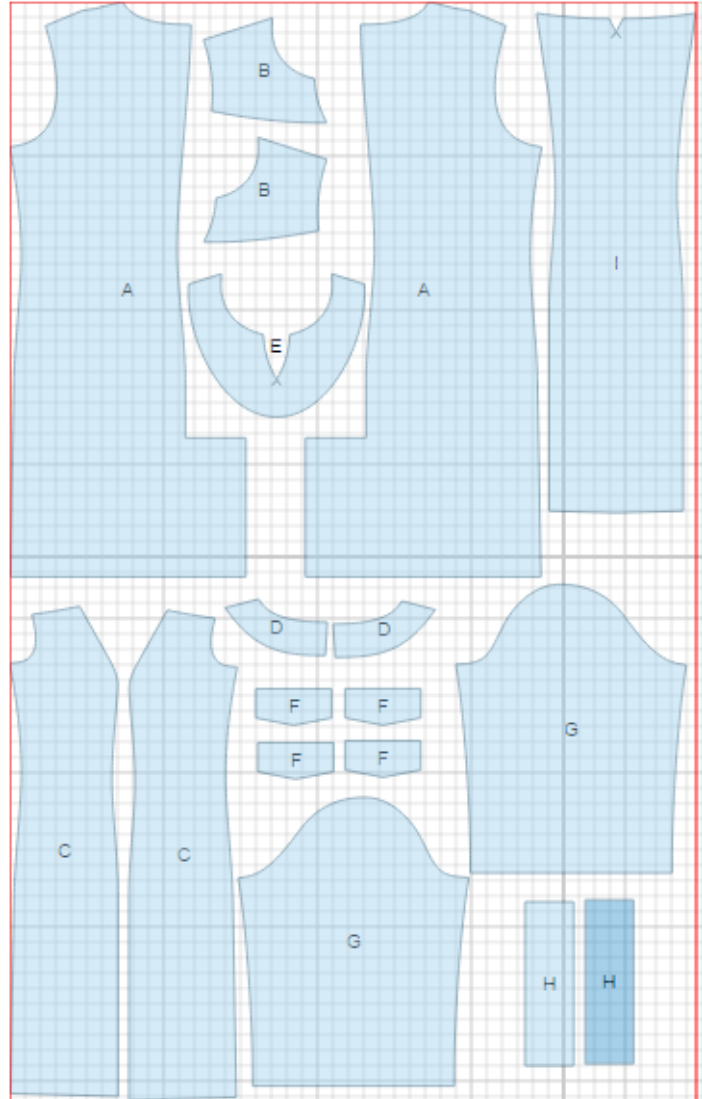
## CUTTING:

### Main fabric:

1. Back – cut 2 (A)
2. Center front - cut 1 (I)
3. Side front - cut 2 (C)
4. Front yoke - cut 2 (B)
5. Sleeve - cut 2 (G)
6. Sleeve strap - cut 2 (H)
7. Flap - cut 4 (F)
8. Back neck facing - cut 2 (D)
9. Front neck facing - cut 1 (E)

### Fusible interfacing:

1. Flap - cut 2 (F)
2. Back neck facing - cut 2 (D)
3. Front neck facing - cut 1 (E)



## INSTRUCTIONS:

1. Apply fusible interfacing to listed pieces.
2. Sew darts on backs, press towards center.
3. On left lower back, along vertical vent edge, cut off 5 cm. Apply fusible interfacing to wrong side of the vent on both back pieces. On right side mark center seam line (vent fold-line). Press left side along vent fold line. On right side, press seam allowance of vent (6 cm). Match backs on center seam and fasten on upper edge of vent. Serge center back seam separately on each side. Serge vent allowances. Sew center back seam from zipper mark to vent corner. Trim corner of vent seam allowance.. Press center seam open, press vent allowances to right side and topstitch.. Install zipper.
4. Place flaps right sides together and sew on three sides. Clip corners,, turn right side out, and press. Serge upper edge. Make decorative stitch at 0.1 cm from the edge. Make a buttonhole.
5. Sew side fronts to center front. Serge and press seams towards center. Sew yokes to front inserting flaps. Serge and press seams towards yokes.
6. Sew shoulder and side seams, serge and press towards back.
7. Sew shoulder seams of neck facings. Press open. Serge outer edge. Pin facing and garment right sides together and sew along neckline, and center front. Clip seam on curves, trim corners. Turn right side out, straighten and press. Baste facing to shoulder seams and to zipper tape.
8. Fold shoulder straps in half lengthwise, right sides together, and sew on long and one short side. Trim seam in corners. Turn straps right side out, straighten and press. Serge short open edge. Make buttonholes. Topstitch straps to wrong side of sleeves according to marking.
9. Sew sleeve seam. Serge and press. Make a gathering stitch along sleeve cap to adjust ease. Sew in sleeves matching notches and adjusting ease.. Serge and press seams.
10. Serge hem of dress, turn under and topstitch. Turn hem of sleeve twice at 1 cm, press and topstitch.
11. Sew buttons on flaps and on sleeves.

TECHNICAL DRAWING:

