

PATTERN OVERVIEW

Made-to-measure pattern:

The pattern is drafted by our proprietary software specifically for your measurements that you supply when making an online order. We strongly recommend that you request a free preview to check the style lines and the amount of fabric needed before ordering the paid version.

Pattern features:

Pencil skirt from woven fabric. The length is at center of kneecap, ease around waist is approx. 1" depending on the size, ease around hips approx. 1.5" depending on the size.

Recommendations on fabric: skirt fabric, suiting fabric, bottom weight woven fabric.

You will also need: fusible interfacing, invisible skirt zipper.

Seam allowances:

If the pattern has double contour the seam allowances are included and are as follows: $\frac{5}{8}$ inch on center back seam for zipper, $\frac{1}{2}$ inch on other seams, 1 inch on hem of skirt.

Attention! Seam allowances are NOT included by default and need to be added when laying out and cutting details if your pattern has single contour.

Fabric requirements:

To estimate fabric requirements, get a free preview for the pattern in your size at www.Lekala.net and use [Online Fabric Estimator](#). Alternatively you may print all the paper patterns and lay them out at the width of fabric you plan to use (usually 44 inches to 60 inches) to see how much fabric you will need. Don't forget to count pair parts and symmetrical parts.

When sewing the garment, pay attention to notches, they must match up.



CUTTING:

Lay pattern pieces out using the straight of grain line. Some pieces may be cut on the fold. This is noted on the pattern piece. Mark all notches and other design features such as darts, pleats etc. from the pattern onto your fabric.

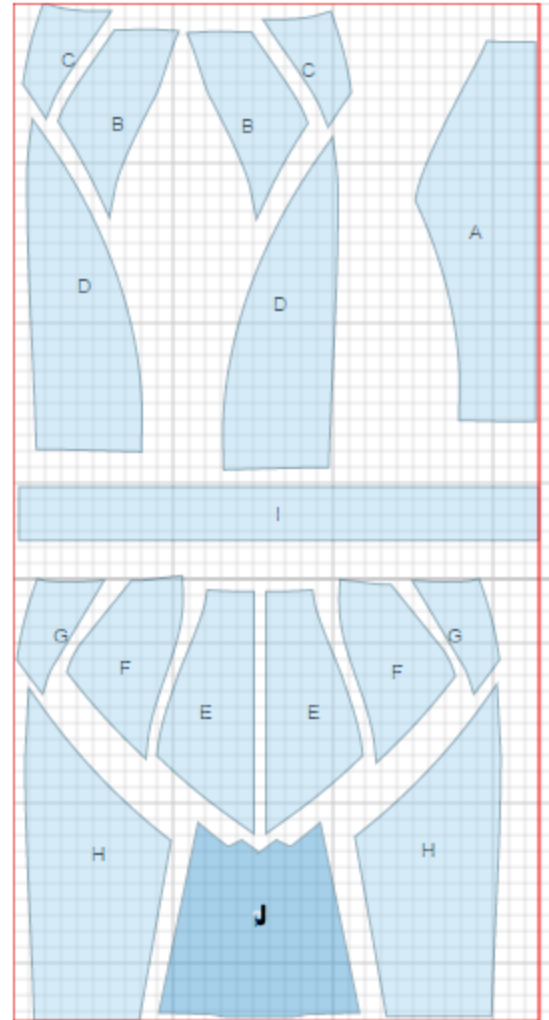
Main fabric:

1. Center front - cut 1 on fold (A)
2. Front insert - cut 2 (B)
3. Side front - cut 2 (C)
4. Lower front - cut 2 (D)
5. Center back - cut 2 (E)
6. Back insert - cut 2 (F)
7. Lower back insert - cut 1 (J)
8. Side back - cut 2 (G)
9. Lower back - cut 2 (H)
10. Waistband - cut 1 (I)

Fusible interfacing:

1. Waistband - cut 1 (I)

* The capital letters in brackets correspond to pattern blocks as seen in Online Fabric Estimator and in sample layouts on the right.



INSTRUCTIONS:

1. Sew side fronts to front inserts. Serge and press seams towards center.
2. Sew these sections to center front. Serge and press seams towards center.
3. Sew lower fronts to center front. Serge and press seams towards center.
4. Sew back inserts to center backs. Serge and press seams towards center.
5. Sew side backs to back inserts. Serge and press seams towards inserts.
6. Serge center back edges separately. Sew center back seam from notch for zipper down. Press back center seam open, including opening for zipper. Sew in zipper.
7. Make and fasten pleats on lower back insert according to marking. Sew insert to center front. Serge and press seam upwards.
8. Sew lower backs to completed upper back section. Serge seams, clip in corners and press towards center.
9. Sew side seams, serge and press towards back.
10. Sew waistband to waistline edge, right sides together, matching notches. The center back seam allowance should line up with the lapped zipper and the right side should extend enough so that the waistband can overlap. Press the seam allowance of the unstitched long edge under, and slipstitch in place.
11. Serge lower edge of skirt, turn under, press, and slipstitch.
12. Make buttonhole on left side of waistband and sew button on right.

TECHNICAL DRAWING:

