

Recommendations on fabric: well draping natural or mixed suiting fabrics.

You will also need: fusible interfacing, invisible zipper, lining.

Seam allowances: back hem – 2.0 cm, other seams – 1.0 cm.

Note on seam allowances:

- If the pattern has double contour the seam allowances are included. They are 1 cm unless specified otherwise.
- If the pattern has single contour, the seam allowances are NOT included and need to be added when laying out the pattern.

Note on length of fabric:

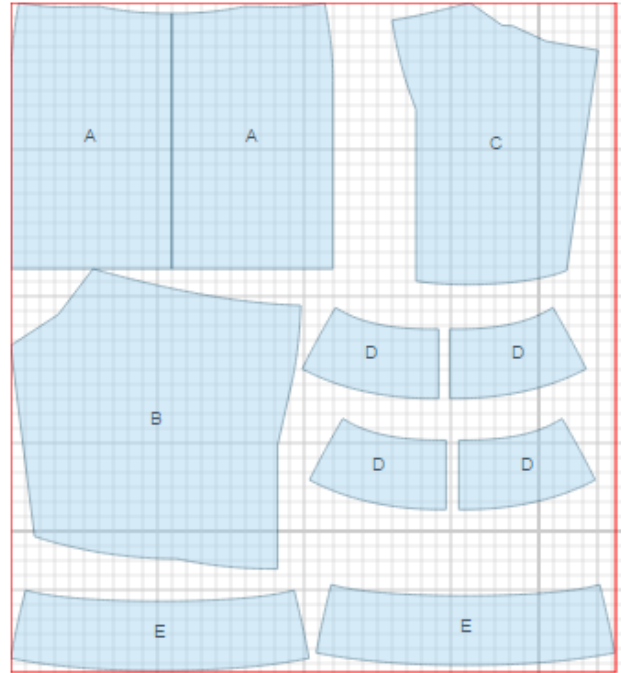
Attention! The amount of fabric needed for your pattern is not included. It will depend on the selected pattern size, the width, and design of the fabric you plan to use. First, print all the paper patterns and lay them out at the width of fabric you plan to use (usually from 90 to 150 cm). Measure how much fabric you will need. Don't forget to account for pieces that need to be cut multiple times and pieces that are cut on the fold.



CUTTING:

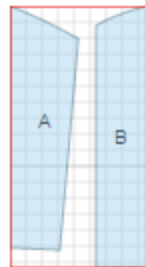
Main fabric:

1. Back skirt – cut 2 (A)
2. Right front skirt - cut 1 (B)
3. Left front skirt - cut 1 (C)
4. Back yoke/facing - cut 4 (D)
5. Front yoke/facing - cut 2 (E)



Lining:

1. Left skirt - cut 1 (A)
2. Right skirt - cut 1 (B)



Fusible interfacing:

1. Back yoke facing - cut 2
2. Front yoke facing - cut 1

INSTRUCTIONS:

1. Apply fusible interfacing to yoke facings.
2. Sew darts on back skirt, press towards center. Sew outer back yokes to back, press seams upwards. Serge center back edges separately. Sew center back seam from zipper mark down to hem. Press seam open, including opening for zipper. Install zipper.
3. Make pleats on right front skirt, direct folds upwards. Pin pleats on upper edge, cutting off extra fabric. Pin lining, right sides together, on right lower edge of skirt and sew seam. Turn right side out and press. Sew left front skirt and left lining the same way.
4. Lay right front skirt over left and baste on upper edge.
5. Sew front yoke to front skirt. Serge and press seam upwards.
6. Sew side seams. Serge and press seam towards back.
7. Sew and press open side seams of yoke facings. Serge lower edge. Place facing on skirt right sides together and sew on upper edge. Turn facings to wrong side and press. Slip stitch short ends of facings to zipper tape. Slip stitch facings to seam allowances along side seams.
8. Serge hem of back skirt. Finish corners. Press hem to wrong side and slipstitch.

TECHNICAL DRAWING:

