

## Sewing Pattern — Blouse 4098

Recommendations on fabric: stretch-knit fabric of natural or mixed fibers.

You will also need: elastic thread

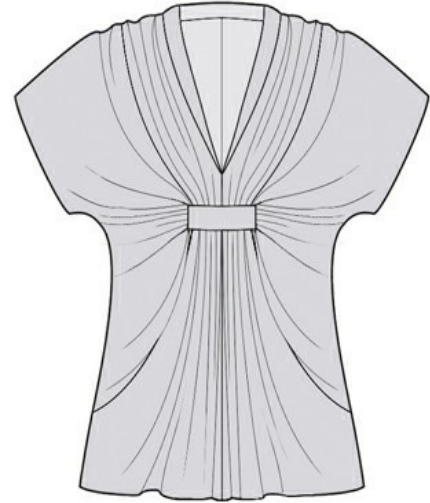
If the pattern has a double line around it, the seam allowances are included.

**Note:** By default, seam allowances are NOT included (single line) and will need to be added when laying out and cutting details.

**SEAM ALLOWANCE:** on hem and sleeve edges- 1.5 cm, other seams - 0.8 cm.

Attention! First of all please print all the paper patterns and lay them out at the width of fabric you plan to use (usually from 90 to 150 cm) to see how much fabric you will need. Don't forget to take into account pieces to be duplicated or cut on a fold.

When sewing the garment, pay attention to notches, they must match up with corresponding pieces.



### **CUTTING:**

(On the pattern pieces, “beam” means straight of grain. Lay out your pieces accordingly. Some pieces will be cut on the fold. This is noted on the pattern piece. Mark all notches and other design features such as darts, pleats etc. from the pattern onto your fabric.)

### **Advice:**

Knit fabric pieces are sewn together with special elastic or narrow zig-zag stitch. Seam allowance on hem is stitched with twin needles to save stretchiness. Pieces can also be sewn together with 3 or 4 – thread serger. When serging, cut seam allowances to 0.6 – 0.8 cm.

### **Main fabric:**

1. Back – cut 2
2. Center front – cut 2
3. Side front -cut 2
4. Collar – cut 1
5. Center loop – cut 1

### **INSTRUCTIONS:**

1. Make a gathering stitch along edge 3 on side front and gather. Sew edges 1 and 2 of side front. Match upper parts (do not sew).
2. Mark and slit on center part of front, leaving seam allowances 0.5 - 0.7 cm. Sew the dart. Sew relieve edge. Press seam.

3. Make a gathering stitch along shoulder seam of front from mark to middle seam and gather. Sew side and shoulder edges of back and of front.
4. Fold collar in half lengthwise, wrong sides together, and sew into the neckline. Begin and finish stitch near the mark of middle seam of front. Sew middle seam of front from mark to hem.
5. Fold the loop in half lengthwise, right sides together, and sew long edge. Turn the loop and press, placing seam in the centre of loop.
6. Along front openings, sew with elastic thread. Sew between holes. Place the loop ends into the holes and sew ends together from the inside.
7. Serge lower edge and edges of the armhole, turn under and topstitch.

**TECHNICAL DRAWING:**

