

Recommendations on fabric: natural or mixed blouse fabrics.

You will also need: fusible interfacing, 9 buttons.

Seam allowances: on hem and upper edge of pocket – 1.5 cm,  
other seams – 1.0 cm.

**Note on seam allowances:**

- If the pattern has double contour the seam allowances are included. They are 1 cm unless specified otherwise.
- If the pattern has single contour, the seam allowances are NOT included and need to be added when laying out the pattern.

**Note on length of fabric:**

Attention! The amount of fabric needed for your pattern is not included. It will depend on the selected pattern size, the width, and design of the fabric you plan to use. First, print all the paper patterns and lay them out at the width of fabric you plan to use (usually from 90 to 150 cm). Measure how much fabric you will need. Don't forget to account for pieces that need to be cut multiple times and pieces that are cut on the fold.



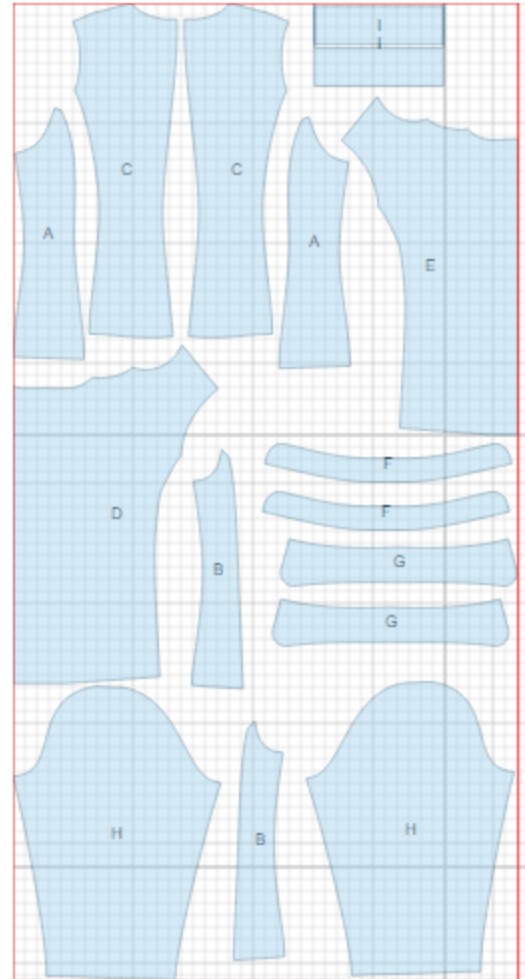
## CUTTING:

### Main fabric:

1. Center back – cut 2 (C)
2. Side back - cut 2 (A)
3. Side front - cut 2 (B)
4. Left front - cut 1 (E)
5. Right front - cut 1 (D)
6. Collar - cut 2 (G)
7. Collar stand- cut 2 (F)
8. Sleeve - cut 2 (H)
9. Cuff - cut 2 (I)

### Fusible interfacing:

1. Collar - cut 1 (G)
2. Collar stand - cut 1 (F)
3. Cuff - cut 2 (I)



## INSTRUCTIONS:

1. Apply fusible interfacing to one-piece plackets, outer collar, inner collar stand and cuffs.
2. Place outer and inner collars right sides together and sew outer edge and ends. Clip into seam. Turn collar out, straighten and press. Place collar stand right sides together inserting collar between pieces, match notches and sew continuing to ends of collar stand. Start and finish stitch exactly at marked line of collar stand connecting seam. Turn ready collar out, straighten and press.
3. Sew darts on back, press towards center. Sew side backs to center backs, serge and press seams towards center. Sew center back seam, serge and press seam towards left side.
4. Make pleats on front neckline and sew them from upper edge to the end of marking, press pleats from center. Sew side fronts to center fronts, serge and press seams towards center.
5. Right front: press front edge under along lines "edge of front band" and "edge of hidden placket". Make decorative stitch along inner edge of placket at 3 cm from front band edge. Turn inner part of placket towards front band. Press. Make buttonholes. Left front: Turn placket under at 1 cm, then again at 3 cm and make decorative stitch along inner edge of placket.
6. Sew shoulder and side seams. Serge and press seams towards back.
7. Sew outer edge of collar stand into neckline. Turn inner edge under and topstitch into outer collar connecting seam.
8. Cut a slit in sleeve according to marking. Cut a bias tape from main fabric of 4 cm wide. Length is equal to double length of slit + 4 cm. Fold bias tape, wrong sides together, in half lengthwise and press. Finish slit with bias tape.
9. Sew sleeve seam. Serge and press seam towards back. Make a counter pleat on sleeve cap and two free pleats on sides of sleeve cap.
10. Sew sleeves into armholes. Serge and press seams.
11. Fold cuff in half lengthwise and sew ends and corner. Start stitch exactly at marked line of cuff connecting seam. Clip into seam at mark, turn cuff right side out and press. Sew outer cuff to sleeve, adjusting gathers. Turn inner cuff edge under and topstitch into connecting seam.
12. Serge lower edge of blouse. Turn under, press, and topstitch.

13. Make a buttonholes on collar and cuffs. Sew buttons on left front and cuffs.

**TECHNICAL DRAWING:**

