

PATTERN OVERVIEW

Made-to-measure pattern:

The pattern is drafted by our proprietary software specifically for your measurements that you supply when making an online order. We strongly recommend that you request a free preview to check the style lines and the amount of fabric needed before ordering the paid version.

Pattern features:

A-line skirt with front / back inserts, zipper in left side seam. The skirt sits at natural waistline, the length is at center of kneecap, ease around waist is approx. 1", ease around hips approx. 1.5" depending on the size.

Recommendations on fabric: wool or wool blend, dress fabric, suiting fabric, bottom weight woven fabric.

You will also need: fusible interfacing, 1 zipper (the length in cm and inches is mentioned on the pattern piece).

Seam allowances:

If the pattern has double contour the seam allowances are included and are as follows: 5/8 inch on all edges. hem of skirt – 1.5 inch.

Attention! Seam allowances are NOT included by default and need to be added when laying out and cutting details if your pattern has single contour.

Fabric requirements:

To estimate fabric requirements, get a free preview for the pattern in your size at www.Lekala.net and use [Online Fabric Estimator](#). Alternatively you may print all the paper patterns and lay them out at the width of fabric you plan to use (usually 44 inches to 60 inches) to see how much fabric you will need. Don't forget to count pair parts and symmetrical parts.

When sewing the garment, pay attention to notches, they must match up.

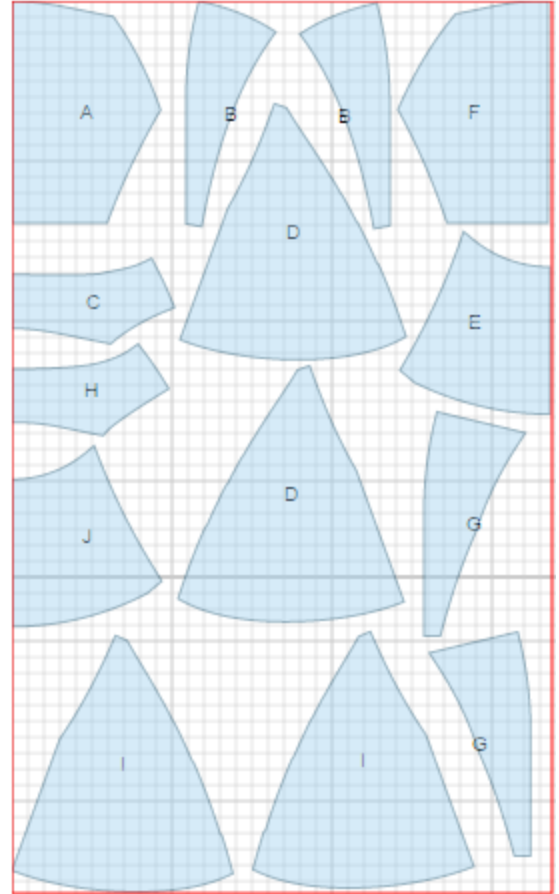


CUTTING:

Lay pattern pieces out using the straight of grain line. Some pieces may be cut on the fold. This is noted on the pattern piece. Mark all notches and other design features such as darts, pleats etc. from the pattern onto your fabric.

Main fabric:

1. Center front - cut 1 on fold (A)
2. Side front - cut 2 (B)
3. Front waistband/facing - cut 2 on fold (C)
4. Front side insert - cut 2 (D)
5. Front center insert - cut 1 on fold (E)
6. Center back - cut 1 on fold (F)
7. Side back - cut 2 (G)
8. Back waistband/facing - cut 2 on fold (H)
9. Back side insert - cut 2 (I)
10. Back center insert - cut 1 on fold (J)



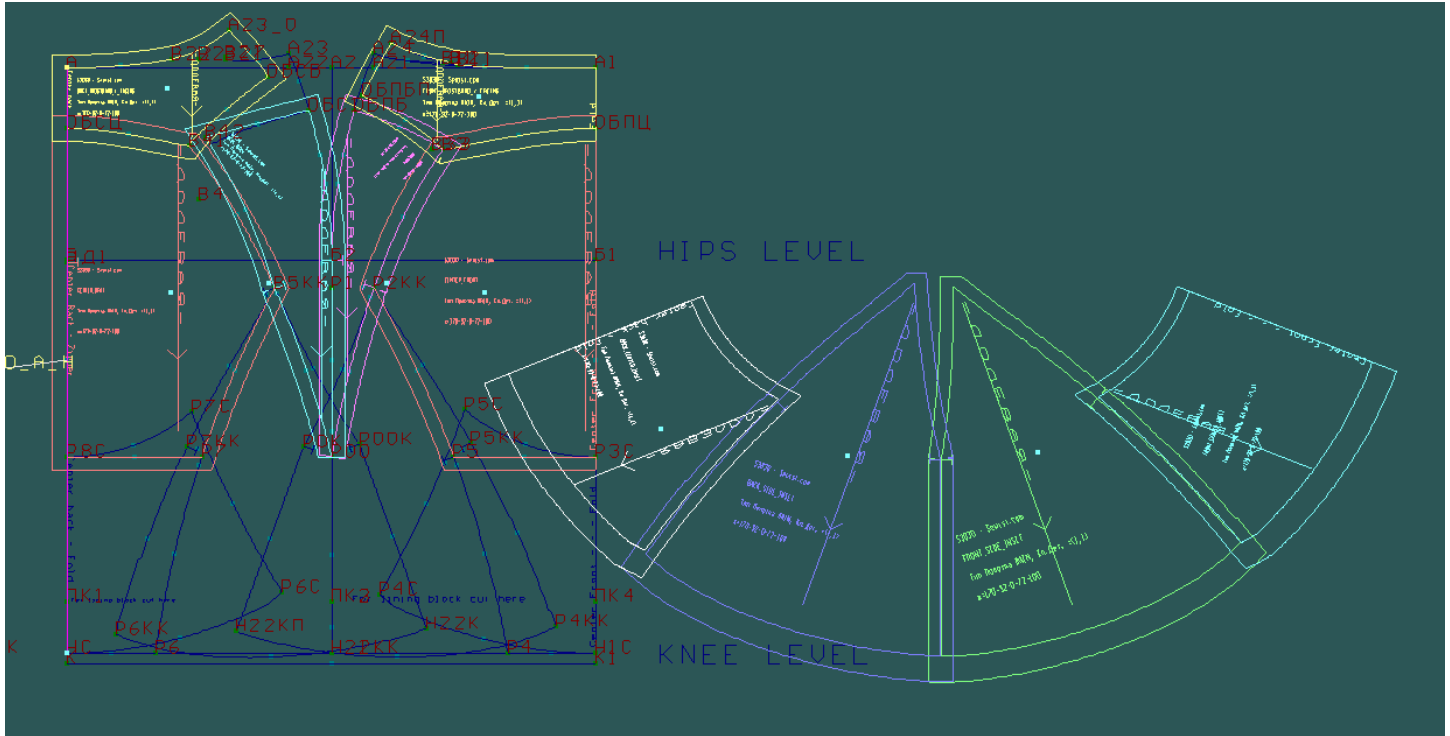
Fusible interfacing:

1. Front waistband facing
2. Back waistband facing

* The capital letters in brackets correspond to pattern blocks as seen in Online Fabric Estimator.

INSTRUCTIONS:

1. Apply fusible interfacing to facings.
2. Sew lower back to center back. Serge and press seam upwards.
3. Sew lower side backs to center piece. Serge and press seams towards center.
4. Sew upper side backs to center piece. Serge and press seams towards center.
5. Sew back waistband to back. Clip into seam. Serge and press towards waistband.
6. Sew lower front to center front. Serge and press seam upwards.
7. Sew lower side fronts to center piece. Serge and press seams towards center.
8. Sew upper side fronts to center piece. Serge and press seams towards center.
9. Sew front waistband to front. Clip into seam. Serge and press towards waistband.
10. Sew right side seam. Serge and press towards back.
11. Sew left side seam from zipper mark down to hem. Serge and press seam pressing slit for zipper. Sew in zipper.
12. Sew side seams on facings.
13. Serge lower edge of facing.
14. Pin facing, right sides together, to waistline, matching side seams and center front line. The seam allowances of facings should line up with the lapped zipper. Sew, and grade seam allowance.
15. Press along upper edge so that facing is toward inside. Slip stitch facings to seam allowances to right side seam.
16. Fasten short ends of facings to zipper tape. Sew hook and eye near waist on the inside of skirt.
17. Hem skirt by hand or machine as desired.



*If you have any further questions regarding the pattern,
please don't hesitate to contact us at info@sewist.com.
We are always happy to help!*