

Recommendations on fabric: natural or mixed fabric suitable for blouses.

You will also need: fusible interfacing.

Seam allowances: hem, hem of sleeve - 1.2 cm, other seams - 1.0 cm.

Note on seam allowances:

- If the pattern has double contour the seam allowances are included. They are 1 cm unless specified otherwise.
- If the pattern has single contour, the seam allowances are NOT included and need to be added when laying out the pattern.

Note on length of fabric:

Attention! The amount of fabric needed for your pattern is not included. It will depend on the selected pattern size, the width, and design of the fabric you plan to use. First, print all the paper patterns and lay them out at the width of fabric you plan to use (usually from 90 to 150 cm). Measure how much fabric you will need. Don't forget to account for pieces that need to be cut multiple times and pieces that are cut on the fold.



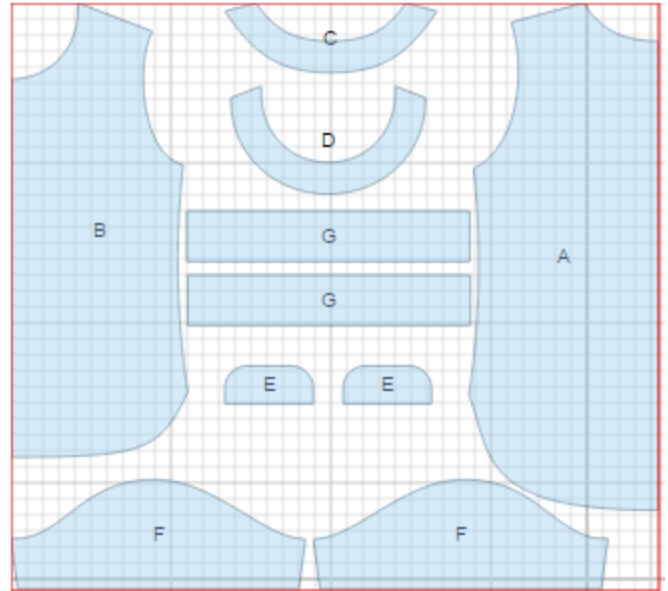
CUTTING:

Main fabric:

1. Back – cut 1 on fold (A)
2. Front – cut 1 on fold (B)
3. Sleeve - cut 2 (F)
4. Cuff - cut 2 (G)
5. Back neck facing - cut 1 (C)
6. Front neck facing - cut 1 (D)
7. Flap - cut 2 (E)

Fusible interfacing:

1. Cuff - cut 2 (G)
2. Back neck facing - cut 1 (C)
3. Front neck facing - cut 1 (D)
4. Flap - cut 1 (E)



INSTRUCTIONS:

1. Apply fusible interfacing to listed pieces.
2. Sew bust darts , press them downwards or upwards depending on bust size.*
3. Sew shoulder seams, serge and press them towards back.
4. Sew shoulder seams of neck facings, press open. Serge outer edge. Pin facings to neckline right sides together and sew along neckline. Clip seam on curves, turn facing to wrong side, straighten and press. Tack facing to shoulder seams.
5. Place flaps right sides together and sew on three sides. Clip seam on curves, turn right side out, straighten and press. Make decorative stitch at 0.1 cm from the edge. Serge upper edge. Sew flap to front, turn it down and topstitch.
6. Serge hem of garment. Turn under, press, and topstitch.
7. Sew sleeves into open armholes, serge, and press seams. Sew side and sleeve seams, serge and press.

8. Sew cuff into ring, press seam open. Fold sleeve in half lengthwise right side out, press, pin to wrong side of the sleeve and sew. Serge seam, turn cuff onto right side and press.

**Bust darts may not be present depending on size. If they are not marked, please ignore this step.*

TECHNICAL DRAWING:

