

Recommendations on fabric: natural or mixed blouse or shirt fabrics.

You will also need: fusible interfacing, invisible zipper, 6 buttons.

Seam allowances: on hem and upper edge of pocket – 1.5 cm, other seams – 1.0 cm.

Note on seam allowances:

- If the pattern has double contour the seam allowances are included. They are 1 cm unless specified otherwise.
- If the pattern has single contour, the seam allowances are NOT included and need to be added when laying out the pattern.

Note on length of fabric:

Attention! The amount of fabric needed for your pattern is not included. It will depend on the selected pattern size, the width, and design of the fabric you plan to use. First, print all the paper patterns and lay them out at the width of fabric you plan to use (usually from 90 to 150 cm). Measure how much fabric you will need. Don't forget to account for pieces that need to be cut multiple times and pieces that are cut on the fold.



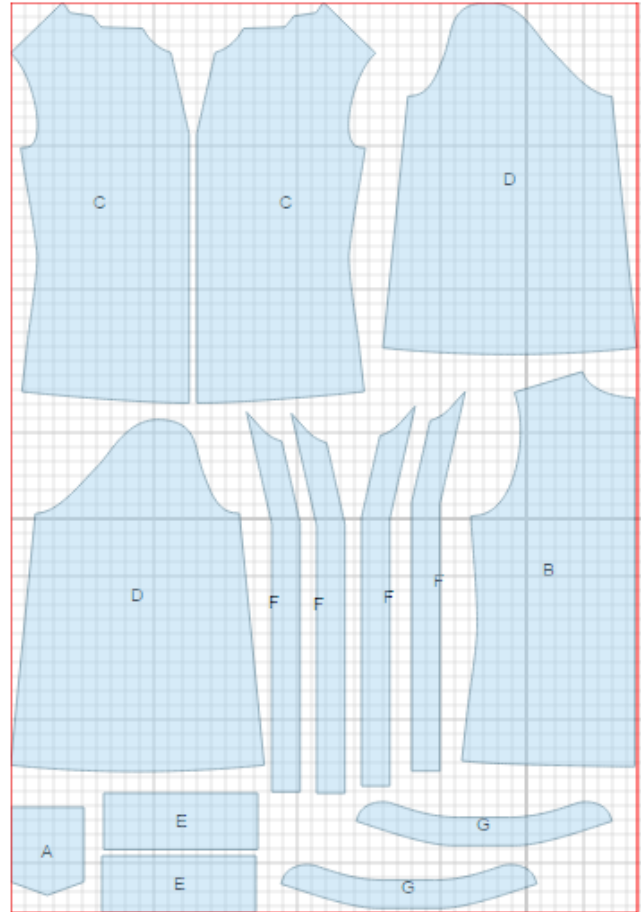
CUTTING:

Main fabric:

1. Back – cut 1 on fold (B)
2. Front - cut 2 (C)
3. Placket - cut 4 (F)
4. Sleeve - cut 2 (D)
5. Stand-up collar - cut 2 (G)
6. Cuff - cut 2 (E)
7. Pocket - cut 1 (A)

Fusible interfacing:

1. Stand-up collar - cut 1 (G)
2. Placket - cut 2 (F)
3. Cuff - cut 2 (E)



INSTRUCTIONS:

1. Apply fusible interfacing to plackets, outer collar and cuffs
2. Serge upper edge of pocket, turn under and topstitch. Turn pocket edges under and press. Lay pocket on left front according to marking and topstitch.
3. Place plackets pairwise right sides together and sew on outer edge. Turn plackets out, straighten and press. Place plackets on fronts, wrong sides together, and sew (connecting seam is from right side). Turn placket to right side, serge seam and press placket. Place fronts wrong sides together and sew on connecting seam of plackets from hem up to mark.
4. Sew shoulder seams. Serge and press seams towards back.
5. Make and fasten pleats on front neckline. Place collar pieces, right sides together, and stitch outer edge starting and ending stitch exactly at marked line of collar connecting seam. Turn collar out, straighten and press. Sew outer collar to neckline. Turn the edge of inner collar under, and topstitch into connecting seam.
6. Sew right side seam. Serge seam and press toward back. Serge left side edges separately. Sew left side seam from mark down to hem and section of 4 cm from armhole down. Sew in zipper.
7. Serge sleeve edges separately. Sew seams from top down to slit mark. Press seam open. Make a stitch along slit at 0.2 cm from the edge. Make a gathering stitch on cap curve and gather fullness. Make a gathering stitch on hem of sleeve and gather fullness.
8. Fold cuff in half lengthwise and sew ends and corner. Turn cuff right side out and press. Sew outer cuff to sleeve. Turn inner cuff edge under and topstitch into connecting seam. Sew sleeves into armholes. Serge seams.
9. Serge lower edge of blouse. Turn under, press, and topstitch. Slip stitch top edge of plackets to front by hand, in 2-3 places.
10. Make buttonholes on cuffs. Sew buttons on cuffs and front.

TECHNICAL DRAWING:

