

Recommendations on fabric: natural or mixed suiting fabric.

You will also need: fusible interfacing, invisible zipper, decorative clasp.

Seam allowances: hem of dress - 3.0 cm, other seams - 1.0 cm

**Note on seam allowances:**

- If the pattern has double contour the seam allowances are included. They are 1 cm unless specified otherwise.
- If the pattern has single contour, the seam allowances are NOT included and need to be added when laying out the pattern.



**Note on length of fabric:**

Attention! The amount of fabric needed for your pattern is not included. It will depend on the selected pattern size, the width, and design of the fabric you plan to use. First, print all the paper patterns and lay them out at the width of fabric you plan to use (usually from 90 to 150 cm). Measure how much fabric you will need. Don't forget to account for pieces that need to be cut multiple times and pieces that are cut on the fold.

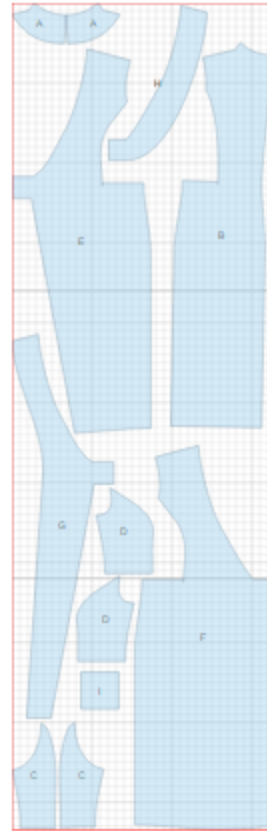
## CUTTING:

### Main fabric:

1. Back – cut 2 (B)
2. Side back - cut 2 (C)
3. Right front - cut 1 (E)
4. Left front - cut 1 (F)
5. Side front - cut 2 (D)
6. Right front facing - cut 1 (G)
7. Left front facing - cut 1 (H)
8. Back neck facing - cut 2 (A)
9. Half-belt - cut 1 (I)

### Fusible interfacing:

1. Right front facing - cut 1
2. Left front facing - cut 1
3. Back neck facing - cut 2



## INSTRUCTIONS:

1. Apply fusible interfacing to listed pieces.
2. Sew side backs to backs clip into corner, serge and press seam allowance toward center.
3. Serge center back edges separately. Sew center back seam from mark down to hem. Press seam open. Sew in zipper.
4. Sew side fronts to fronts trimming seam allowance in corners. Serge and press seam allowances towards center.

- 
5. Serge center edge of left front, press to wrong side and topstitch.
  6. Sew shoulder seams. Clip seams on curves, press open and serge.
  7. Sew back neck facings to front facings. Clip seams on curves and press open. Serge outer edges on right front facing. On left front facing serge outer edge and side cut to mark.
  8. Place back neck facings and front facings on back right sides together and sew - on left front: sew back neck and front neck to mark, trim seam near mark; on right front: sew back neck, front neck and front band. Trim seams, turn facings to wrong side and press.
  9. Lay right front over left front, matching center lines and topstitch into horizontal seam of left side part connection fastening left front.
  10. Fold half-belt in half along center line, right sides together and sew long and one short edges. Turn right side out, straighten and press.
  11. Sew side seams inserting self-belt into left side seam. Serge and press seams towards back.
  12. Cut a bias tape of 4 cm wide. Length is equal to armhole + 5 cm. Fold bias tape in half lengthwise right side out and press. Place bias tape along armhole from right side and sew. Trim seam. Turn bias tape to the inside and topstitch along the fold onto dress. Press.
  13. Serge hem of dress, turn under and slipstitch.
  14. Set half-belt and extending part of right front into clasp and fasten.

TECHNICAL DRAWING:

