

Recommendations on fabric: natural or mixed fabric with lycra suitable for dresses, of 2 colours.

You will also need: 6 buttons, invisible zipper

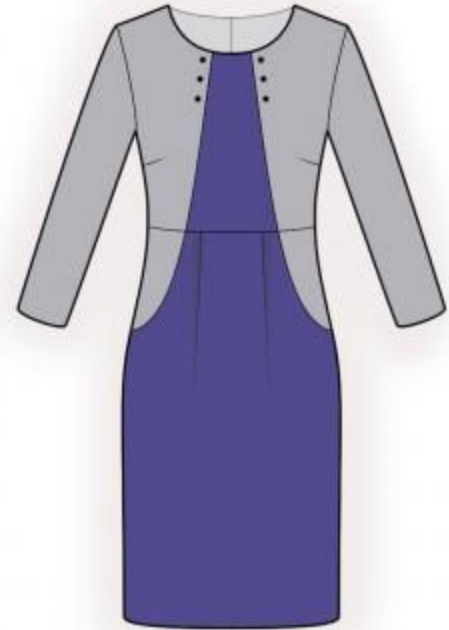
Seam allowances: hem of dress / hem of sleeve - 2.0 cm, other seams - 1.0 cm

Note on seam allowances:

- If the pattern has double contour the seam allowances are included. They are 1 cm unless specified otherwise.
- If the pattern has single contour, the seam allowances are NOT included and need to be added when laying out the pattern.

Note on length of fabric:

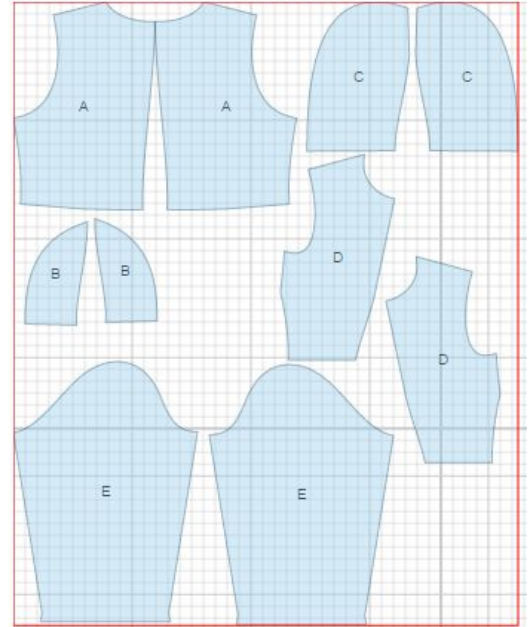
Attention! The amount of fabric needed for your pattern is not included. It will depend on the selected pattern size, the width, and design of the fabric you plan to use. First, print all the paper patterns and lay them out at the width of fabric you plan to use (usually from 90 to 150 cm). Measure how much fabric you will need. Don't forget to account for pieces that need to be cut multiple times and pieces that are cut on the fold.



CUTTING:

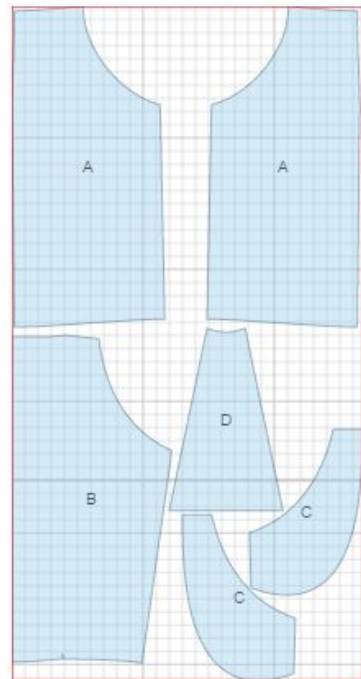
Main fabric 1:

1. Upper back – cut 2 (A)
2. Upper side front - cut 2 (D)
3. Side front - cut 2 (C)
4. Side back - cut 2 (B)
5. Sleeve - cut 2 (E)



Main fabric - 2:

1. Upper center front - cut 1 (D)
2. Lower back - cut 2 (A)
3. Lower front - cut 1 on fold (B)
4. Pocket bag - cut 2 (C)



INSTRUCTIONS:

1. Sew darts on backs. Trim bulk of dart if desired and press towards center. Sew side and lower backs. Serge and press seam towards main piece. Sew upper back to lower back. Serge and press seam upwards. Serge center back edges separately. Sew center back seam from zipper mark down to hem. Press seam open pressing the slit. Sew in zipper.
2. Sew darts on fronts. Trim bulk of dart if desired and press upwards. Sew upper fronts to upper center front. Serge and press seams towards center.
3. Lay pocket bag on right side of lower front and sew. Clip seam, turn to the inside and press. Lay lower front on side part and sew pocket bag edges. Serge seam. Pin pocket pieces on upper and side edges. Make pleats on lower front, direct folds towards center. Sew upper front to lower front. Serge and press seam upwards.
4. Sew shoulder and side seams. Serge and press seams towards back.
5. Cut a bias tape of 4 cm wide. Length is equal to neckline + 4 cm. Fold bias tape in half lengthwise right side out and press. Place bias tape along neckline from right side and sew. Turn bias tape to the inside and topstitch along the fold onto blouse. Press.
6. Sew sleeve seams. Serge and press towards back. Serge hem of sleeve, turn under and topstitch.
7. Sew sleeves into armholes.
8. Serge hem of dress, turn under and topstitch.
9. Sew on decorative buttons.

TECHNICAL DRAWING:

