

Recommendations on fabric: natural or mixed blouse fabrics.

You will also need: fusible interfacing, invisible zipper.

Seam allowances: on hem / hem of sleeve – 1.5 cm, other seams – 1.0 cm.

Note on seam allowances:

- If the pattern has double contour the seam allowances are included. They are 1 cm unless specified otherwise.
- If the pattern has single contour, the seam allowances are NOT included and need to be added when laying out the pattern.

Note on length of fabric:

Attention! The amount of fabric needed for your pattern is not included. It will depend on the selected pattern size, the width, and design of the fabric you plan to use. First, print all the paper patterns and lay them out at the width of fabric you plan to use (usually from 90 to 150 cm). Measure how much fabric you will need. Don't forget to account for pieces that need to be cut multiple times and pieces that are cut on the fold.



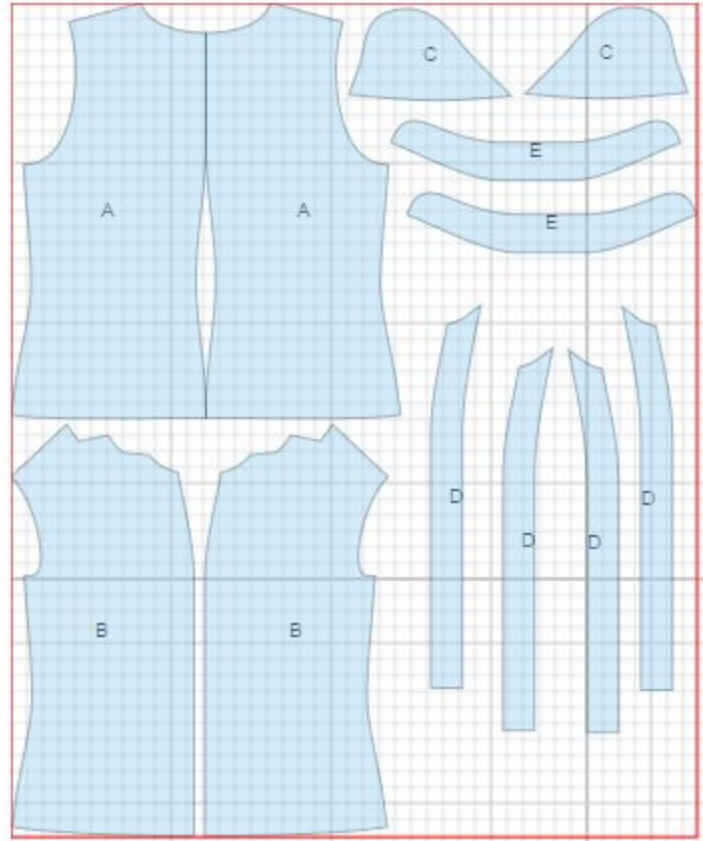
CUTTING:

Main fabric:

1. Back – cut 2 (A)
2. Front - cut 2 (B)
3. Placket - cut 4 (D)
4. Sleeve - cut 2 (C)
5. Stand-up collar - cut 2 (E)

Fusible interfacing:

1. Stand-up collar - cut 1 (E)
2. Placket - cut 2 (D)



INSTRUCTIONS:

1. Apply fusible interfacing to plackets and outer collar.
2. Sew darts on fronts and backs. Press towards center. Sew center back seam. Serge and press towards left side.
3. Place plackets pairwise right sides together and sew on outer edge. Turn plackets out, straighten and press. Place plackets on fronts, wrong sides together, and sew (connecting seam is from right side). Turn placket to right side, serge seam and press placket. Place fronts wrong sides together and sew on connecting seam of plackets from hem up to mark.
4. Sew shoulder seams. Serge and press seams towards back.
5. Place collar pieces, right sides together, and stitch outer edge starting and ending stitch exactly at marked line of collar connecting seam. Turn collar out, straighten and press.
6. Sew outer collar to neckline. Turn the edge of inner collar under, and topstitch into connecting seam.
7. Sew right side seam. Serge seam and press toward back. Serge left side edges separately. Sew left side seam from mark down to hem. Sew in zipper.
8. Serge hem of sleeve, turn under and topstitch. Make a gathering stitch on cap curve and gather fullness. Sew sleeve into armhole. Serge seam.
9. Cut a bias tape of 4 cm wide. Length is equal to lower part of armhole + 4 cm. Fold bias tape in half lengthwise right side out and press. Place bias tape along armhole from right side and sew. Turn bias tape to the inside and topstitch along the fold onto blouse. Press.
10. Serge lower edge of blouse. Turn under, press, and topstitch. Slip stitch top edge of plackets to front by hand, in 2-3 places.

TECHNICAL DRAWING:

