

**Recommendations on fabric:** natural or mixed heavy-weight dress fabric.

**You will also need:** fusible interfacing, lining, 2 buttons, 2 decorative clasps.

Seam allowances: all seams - 1 cm.

**Note on seam allowances:**

- If the pattern has double contour the seam allowances are included. They are 1 cm unless specified otherwise.

- If the pattern has single contour, the seam allowances are NOT included and need to be added when laying out the pattern.

**Note on length of fabric:**

*Attention! The amount of fabric needed for your pattern is not included. It will depend on the selected pattern size, the width, and design of the fabric you plan to use. First, print all the paper patterns and lay them out at the width of fabric you plan to use (usually from 90 to 150 cm). Measure how much fabric you will need. Don't forget to account for pieces that need to be cut multiple times and pieces that are cut on the fold.*



**CUTTING:**

Main fabric:

1. Center back – cut 2 (E)
2. Side back – cut 2 (C)
3. Center front – cut 2 (G)
4. Side front – cut 2 (D)
5. Front facing - cut 2 (H)
6. Back neck facing – cut 1 (F)
7. Back hem facing - cut 2 (A)
8. Front hem facing - cut 2 (B)
9. Back belt - cut 1 (I)
10. Front belt - cut 2 (J)

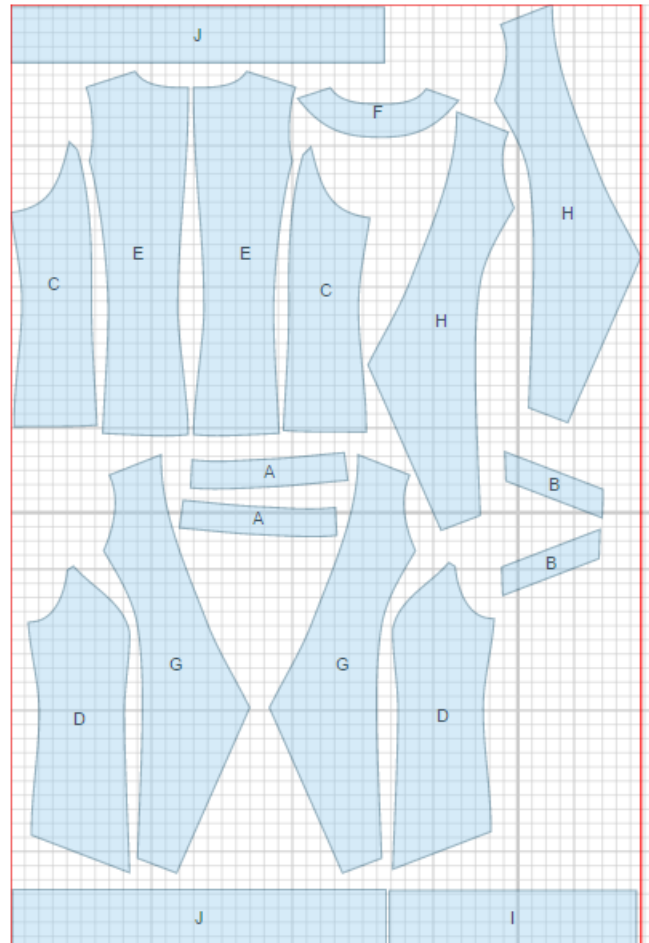
Lining:

1. Center back – cut 2 (E)
2. Side back – cut 2 (C)
3. Side front – cut 2 (D)

Note: Lining pieces are cut using main pattern pieces excluding facings.

Fusible interfacing:

1. Front facing - cut 2 (H)
2. Back neck facing - cut 1 (F)
3. Back hem facing - cut 2 (A)
4. Front hem facing - cut 2 (B)



---

**INSTRUCTIONS:**

1. Apply fusible interfacing to listed pieces.
2. Sew center back seam. Serge and press towards left side. Sew center backs to side backs. Press seams towards center.
3. Sew center fronts to side fronts. Press seams towards center.
4. Sew and side and shoulder seams. Press towards back.
5. Sew side fronts/back to center fronts/back of lining, press seams towards center. Sew hem facings to lining, press seams upwards. Sew center back seam on lining, press seam towards left side. Sew back neck facing and front facing to lining, press seams onto main fabric. Sew shoulder and side seams leaving an opening in left side seam.
6. Place main garment with lining right sides together and sew along front facing, neck and lower edge. Clip seam on curves, trim in corners. Turn vest right side out, straighten and press.
7. Sew armhole through the opening in left side seam in two steps: back armhole from shoulder seam to side seam and then front armhole from shoulder seam to side seam. Sew the opening closed.
8. Make buttonholes on fronts according to marking. Sew buttons.
9. Fold back belt piece in half lengthwise right side inwards and sew on long side. Turn right side out, straighten and press. Serge short edges. Fold front belt pieces in half lengthwise right side inwards and sew on long and one short sides. Turn right side out, straighten and press. Serge short edges. Set serged sides of belt into clasp and topstitch turning under and topstitching serged edge.

TECHNICAL DRAWING:

