

Recommendations on fabric: lightweight, sheer, natural or mixed fabric suitable for blouses.

Seam allowances: on hem and edges of drape- 1.5 cm, hem of sleeve - 2.0 cm, other seams – 1.0 cm.

**Note on seam allowances:**

- If the pattern has double contour the seam allowances are included. They are 1 cm unless specified otherwise.
- If the pattern has single contour, the seam allowances are NOT included and need to be added when laying out the pattern.

**Note on length of fabric:**

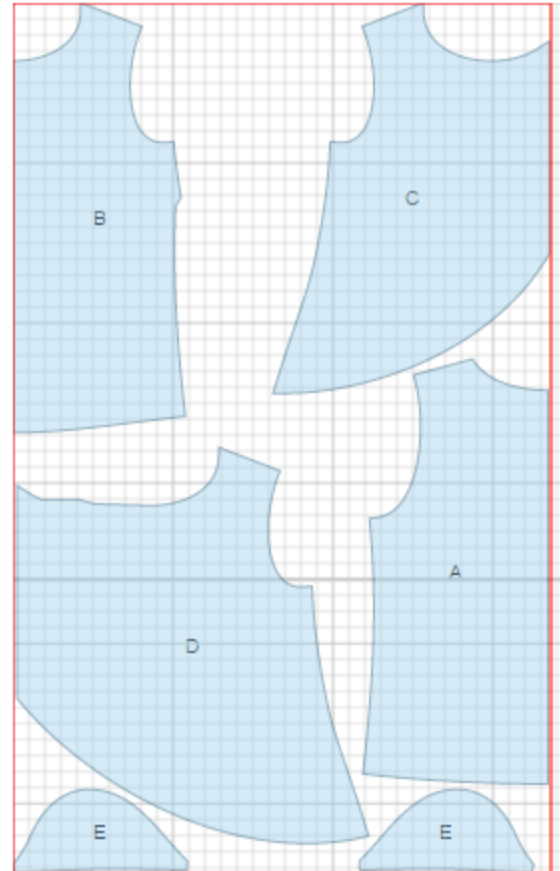
Attention! The amount of fabric needed for your pattern is not included. It will depend on the selected pattern size, the width, and design of the fabric you plan to use. First, print all the paper patterns and lay them out at the width of fabric you plan to use (usually from 90 to 150 cm). Measure how much fabric you will need. Don't forget to account for pieces that need to be cut multiple times and pieces that are cut on the fold.



## CUTTING:

### Main fabric:

1. Back – cut 2 on fold (A)
2. Front - cut 1 on fold (B)
3. Upper left front - cut 1 (C)
4. Upper right front - cut 1 (D)
5. Sleeve - cut 2 (E)



## INSTRUCTIONS:

1. Sew darts on front, press downwards.
2. Sew side and shoulder seams of lower front/back pieces. Serge and press seams towards back.
3. Sew side and shoulder seams of upper front/back pieces. Serge and press seams towards back. Serge outer edges of hem and drape, turn under and topstitch.
4. Make and fasten pleats on right upper front. Lay right front over left, and pin on neckline edge.
5. Pin lower section, with right side up on right side of upper section and sew along neckline. Clip seam on curves, turn upper part to right side. Match on armhole edges, and baste. Treat as one piece.
6. Serge lower edge of sleeve, press to wrong side and topstitch. Sew sleeves in. Serge seams.
7. Cut a bias tape of 4 cm wide. Length is equal to lower part of armhole + 4 cm. Fold bias tape in half lengthwise right side out and press. Place bias tape along armhole from right side and sew. Turn bias tape to the inside and topstitch along the fold onto blouse. Press.
8. Serge lower edge of inner blouse, turn under and topstitch.

TECHNICAL DRAWING:

