

Recommendations on fabric: natural or mixed fabric with lycra suitable for dresses.

You will also need: fusible interfacing, invisible zipper

Seam allowances: all seams – 1.0 cm, hem of dress - 1.5 cm, hem of sleeve - 2.0 cm

Note on seam allowances:

- If the pattern has double contour the seam allowances are included. They are 1 cm unless specified otherwise.
- If the pattern has single contour, the seam allowances are NOT included and need to be added when laying out the pattern.

Note on length of fabric:

Attention! The amount of fabric needed for your pattern is not included. It will depend on the selected pattern size, the width, and design of the fabric you plan to use. First, print all the paper patterns and lay them out at the width of fabric you plan to use (usually from 90 to 150 cm). Measure how much fabric you will need. Don't forget to account for pieces that need to be cut multiple times and pieces that are cut on the fold.



CUTTING:

Main fabric 1:

1. Center back – cut 2 (C)
2. Side back - cut 2 (A)
3. Side front - cut 2 (B)
4. Center front - cut 1 (F)
5. Upper sleeve - cut 2 (D)
6. Lower sleeve - cut 2 (E)

Main fabric - 2:

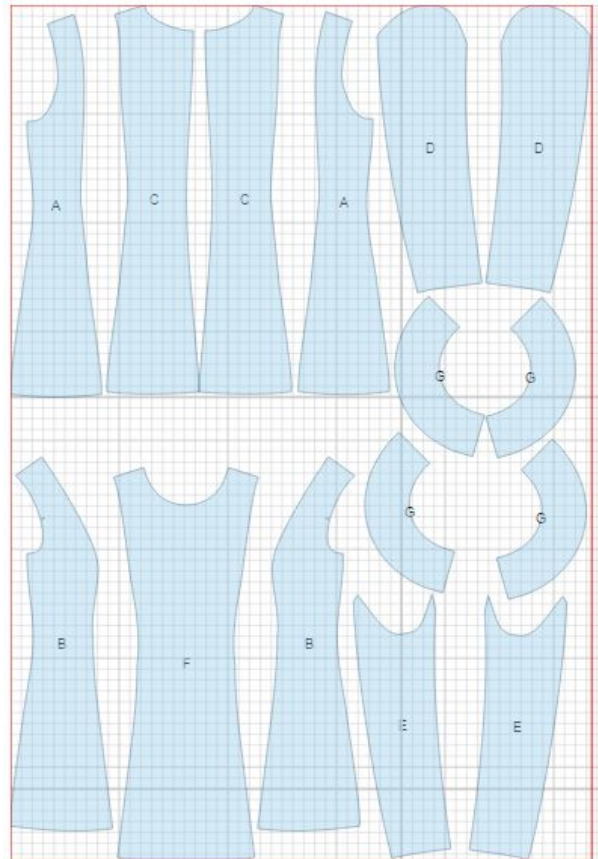
1. Collar - cut 4 (G)

Fusible interfacing:

1. Collar - cut 2 (G)

INSTRUCTIONS:

1. Apply fusible interfacing to upper collars.
2. Serge separately back center edges. Sew center back seam from zipper mark down to hem. Press seam open, pressing zipper slit. Sew in zipper. Sew side backs to center backs. Serge and press seams towards center.
3. Sew side fronts to center.. Serge and press seams towards center.
4. Place collars right sides together and sew on outer edge. Trim seams in corners, clip into curves. Turn collar right side out, straighten and press. Sew outer collar edge into neckline matching notches. Turn under inner collar edge and topstitch or handstitch into connecting seam.
5. Sew sleeve seams. Serge and press towards back. Serge hem of sleeve, turn under and topstitch.
6. Sew sleeves into armholes. Serge seams.
7. Serge hem of dress, turn under, and topstitch.



TECHNICAL DRAWING:

