

Recommendations on fabric: natural or mixed light-weight blouse fabric such as chiffon.

You will also need: 11 buttons, fusible interfacing.

Seam allowances: on hem – 1.2 cm, other seams – 1.0 cm.

Note on seam allowances:

- If the pattern has double contour the seam allowances are included. They are 1 cm unless specified otherwise.

- If the pattern has single contour, the seam allowances are NOT included and need to be added when laying out the pattern.

Note on length of fabric:

Attention! The amount of fabric needed for your pattern is not included. It will depend on the selected pattern size, the width, and design of the fabric you plan to use. First, print all the paper patterns and lay them out at the width of fabric you plan to use (usually from 90 to 150 cm). Measure how much fabric you will need. Don't forget to account for pieces that need to be cut multiple times and pieces that are cut on the fold.



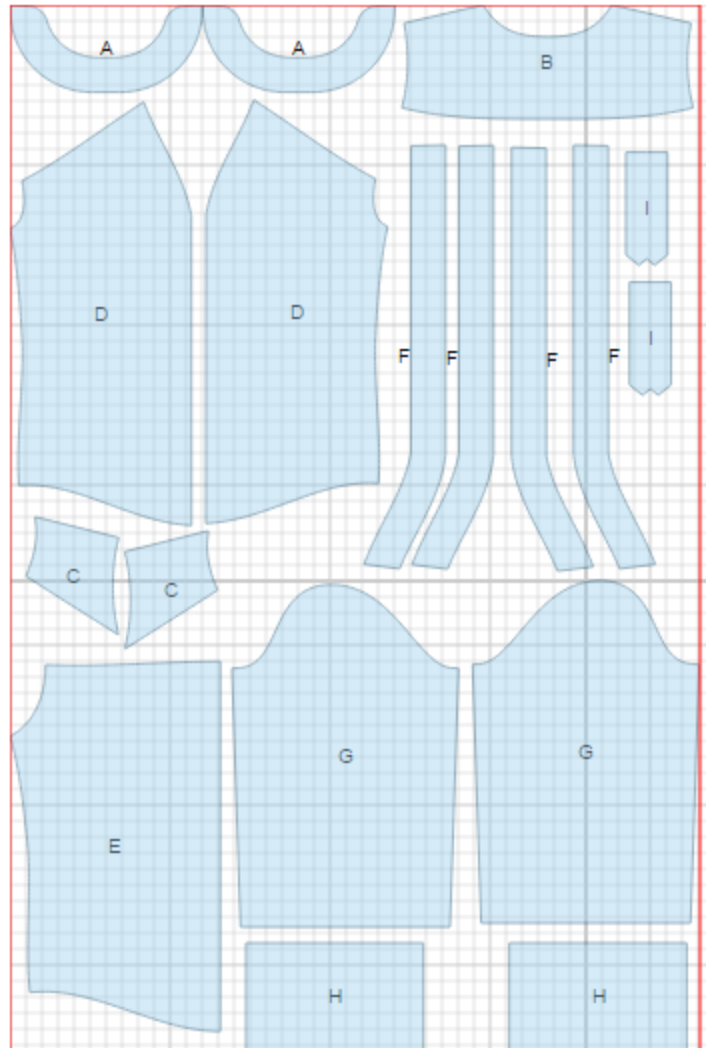
CUTTING:

Main fabric:

1. Back yoke – cut 1 (B)
2. Back – cut 1 on fold (E)
3. Front - cut 2 (D)
4. Sleeve - cut 2 (G)
5. Cuff - cut 2 (H)
6. Placket - cut 4 (F)
7. Front yoke - cut 2 (C)
8. Stand-up collar - cut 2 (A)
9. Sleeve placket - cut 2 (I)

Fusible interfacing:

1. Cuff - cut 2 (H)
2. Stand-up collar - cut 2 (A)
3. Placket - cut 2 (F)



INSTRUCTIONS:

1. Apply fusible interfacing to cuffs, facings and outer plackets.
2. Make and fasten pleats on back (folds are directed towards center). Sew back yoke to back. Serge and press seam upwards.
3. Make and fasten pleats on front pieces. Sew yoke to front. Serge and press seam upwards.
4. Sew shoulder and side seams. Serge seams and press toward back.
5. Sleeve vent: Cut sleeve on marked line, sniping corner in upper part of slit. Turn under section from slit to marked line (1.7 cm) twice at 0.5 cm and topstitch. Fold placket in half lengthwise right sides together and stitch corner to cross mark. Cut off seam allowances close to stitch, snip seam allowance at the end of stitch. Turn placket right side out, straighten and press. Topstitch at 0,1 cm along fold-line from below up to cross mark. Place placket on sleeve right sides together and sew on marked line. Snip sleeve crosswise at the end of stitch from slit to connection line. Turn placket to right side, turn under open edge and sew. Match placket with marked line on sleeve and topstitch upper corner on contour and along cross mark.
6. Sew sleeve seam. Press seam towards back. Make and fasten pleats on sleeve. Fold cuff along center line right, sides together, and stitch short sides. Start stitch exactly at marked line of cuff/sleeve connecting seam. Trim seam allowances at mark, turn cuff out and press. Sew outer part of cuff to lower edge of sleeve. Turn inner edge under, and topstitch into connecting seam.
7. Make a gathering stitch along sleeve cap to adjust ease. Sew sleeves into armholes, matching marks and adjusting ease. Serge and press seam towards sleeve.
8. Place stand-up collars right sides together and sew. Trim seams, turn right side out and press. Sew outer collar into neckline. Turn inner collar edge under, and topstitch into connecting seam.
9. Place plackets pairwise right sides together and sew on upper and outer edges. Trim seam in corners, turn right side out and press. Sew outer placket to front. Turn inner edge under and topstitch into connecting seam.
10. Serge lower edge of blouse. Turn under, press, and topstitch.
12. Make buttonholes and sew buttons.

TECHNICAL DRAWING:

