

Recommendations on fabric: natural or mixed light-weight blouse or dress fabrics / suiting fabric.

You will also need: 4 buttons, fusible interfacing, elastic.

Seam allowances: on hem – 1.5 cm, on upper edge of pocket - 2 cm, other seams – 1.0 cm.

Note on seam allowances:

- If the pattern has double contour the seam allowances are included. They are 1 cm unless specified otherwise.

- If the pattern has single contour, the seam allowances are NOT included and need to be added when laying out the pattern.

Note on length of fabric:

Attention! The amount of fabric needed for your pattern is not included. It will depend on the selected pattern size, the width, and design of the fabric you plan to use. First, print all the paper patterns and lay them out at the width of fabric you plan to use (usually from 90 to 150 cm). Measure how much fabric you will need. Don't forget to account for pieces that need to be cut multiple times and pieces that are cut on the fold.



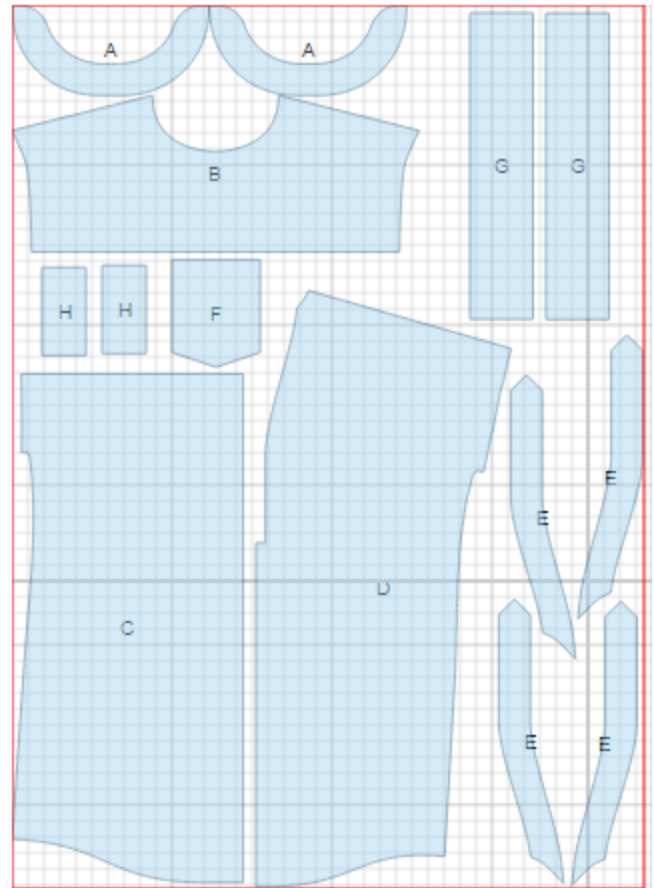
CUTTING:

Main fabric:

1. Back yoke – cut 1 (B)
2. Back – cut 1 on fold (C)
3. Front - cut 1 on fold (D)
4. Placket - cut 4 (E)
5. Sleeve - cut 2 (G)
6. Stand-up collar - cut 2 (A)
7. Shoulder strap - cut 2 (H)
8. Pocket - cut 1 (F)

Fusible interfacing:

1. Stand-up collar - cut 1 (A)
2. Placket - cut 2 (E)



INSTRUCTIONS:

1. Apply fusible interfacing to plackets and outer collar..
2. Make and fasten a box pleat on back. Sew back yoke to back. Serge and press seam upwards.
3. Place plackets pairwise right sides together and sew: left placket - on outer edges to lower edge (to corner beginning), right placket - on outer edge and corner to notch. On right placket snip seam allowance at notch. Turn plackets right side out, straighten and press. Snip placket seam allowance in corners on front, leaving 1 mm to seam line. Sew outer parts of placket to front. Turn left placket to right side, turning lower seam allowance inwards. Turn right placket to right side straightening lower corner from right side. Turn under seam allowances of inner plackets. Topstitch plackets sewing lower edge at the same time. Fasten lower corner of right placket from right side.
4. Serge upper edge of pocket, turn under along fold line, right sides together. Stitch and turn right side out, then topstitch. Press seam allowances of side and lower edges under. Place pocket on left front according to marking and topstitch.
5. Make a gathering stitch on shoulder edges of front and gather fullness. Sew shoulder seams of front to yoke. Serge and press seams upwards. Sew two rows of 0.5 cm elastic along shoulder seam from wrong side.
6. Place collar pieces right sides together and stitch outer edge starting and ending stitch exactly at marked line of collar connecting seam. Turn collar out, straighten and press.
7. Sew outer collar to neckline. Turn the edge of inner collar under, and topstitch into connecting seam.
8. Sew side seams. Serge seams and press toward back.
9. Sew sleeve into ring, press seam open. Fold sleeve in half lengthwise right side out, place onto wrong side of the armhole and sew. Serge seam, turn sleeve onto right side and press.
10. Fold sleeve strap in half right sides together and sew on long sides and one short side. Trim seams in corners, turn right side out, straighten and press. Serge short open edge. Topstitch strap into sleeve connecting seam on shoulder from the wrong side.
11. Serge lower edge of tunic. Turn under, press, and topstitch.
12. Make buttonholes on straps and collar. Sew buttons on left front and shoulder seams.

TECHNICAL DRAWING:

