

Recommendations on fabric: natural or mixed fabric suitable for dresses, silk.

You will also need: invisible zipper, lining.

Seam allowances: all seams – 1 cm.

Note on seam allowances:

- If the pattern has double contour the seam allowances are included. They are 1 cm unless specified otherwise.
- If the pattern has single contour, the seam allowances are NOT included and need to be added when laying out the pattern.

Note on length of fabric:

Attention! The amount of fabric needed for your pattern is not included. It will depend on the selected pattern size, the width, and design of the fabric you plan to use. First, print all the paper patterns and lay them out at the width of fabric you plan to use (usually from 90 to 150 cm). Measure how much fabric you will need. Don't forget to account for pieces that need to be cut multiple times and pieces that are cut on the fold.



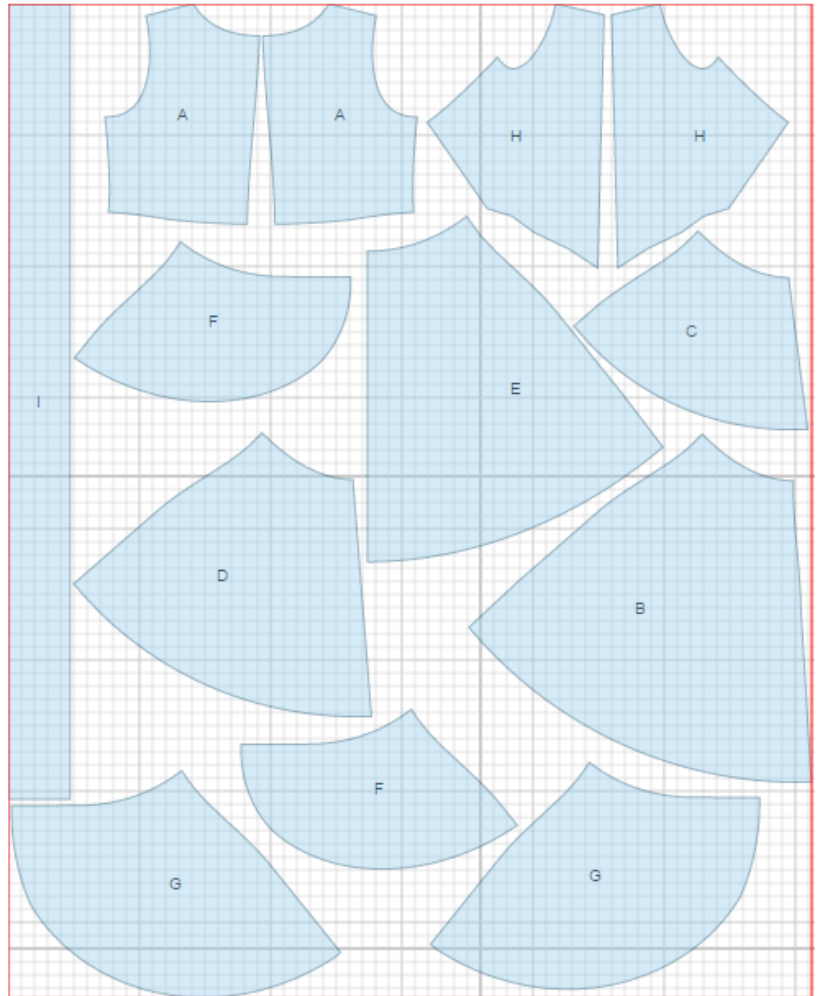
CUTTING:

Main fabric:

1. Upper back – cut 2 (A)
2. Upper front - cut 2 (H)
3. Lower front skirt – cut 1 on fold (E)
4. Front skirt 1 - cut 2 (F)
5. Front skirt 2 - cut 2 (G)
6. Lower back skirt – cut 1 on fold (B)
7. Back skirt 1 - cut 1 on fold (C)
8. Back skirt 2 - cut 1 on fold (D)

Lining:

1. Upper back – cut 2 (A)
2. Upper front - cut 2 (H)



INSTRUCTIONS:

1. Sew darts on upper backs. Press towards center. Sew center back seam on bodice. Serge and press seam towards left side.
2. Sew shoulder seams, serge and press seams towards back. Sew right side seam. Serge and press towards back.
3. Sew darts on lining pieces. Sew right side and shoulder seams. Sew lining to bodice along neckline. Trim seam allowances in corners, turn right side out. Sew armholes in two steps: first front, then back armholes. Make pleats on right front (folds are directed towards side seam). Lay right front over left and fasten on lower edge.
4. Sew right side seams of skirts matching lower front skirt to lower back skirt, front skirt 1 to back skirt 1 and front skirt 2 to back skirt 2. Serge seams and press towards back. Serge left side edges separately. On lower front skirt, sew left side seam from zipper mark down to hem. On left side of skirt 1 and 2, sew from zipper mark down to hem. Fold seam allowance under and slipstitch, leaving an opening to reach zipper in lower skirt (installed in step 6). Serge lower edge of skirt pieces, turn under and topstitch or use rolled seam to finish the edges. Lay right pieces over left and baste outer skirts to lower skirt along upper edge. The folded left side seam allowance of skirt 1 and 2 will meet at the zipper foldline.
5. Sew skirt to bodice. Serge and press seam upwards.
6. Install zipper in left side seam of bodice and lower skirt, being careful not to catch outer skirt openings for zipper.
7. Serge lower edge of dress. Turn under and topstitch or use rolled seam to finish the edge.
8. Fold belt in half lengthwise right side together and sew leaving an opening in one long side. Turn belt through opening and press. Sew opening closed.

TECHNICAL DRAWING:

