

Recommendations on fabric: natural or mixed fabric suitable for blouses, e.g. silk.

You will also need: one button.

Seam allowances: on hem – 1.2 cm, other seams – 1.0 cm.

Note on seam allowances:

- If the pattern has double contour the seam allowances are included. They are 1 cm unless specified otherwise.
- If the pattern has single contour, the seam allowances are NOT included and need to be added when laying out the pattern.

Note on length of fabric:

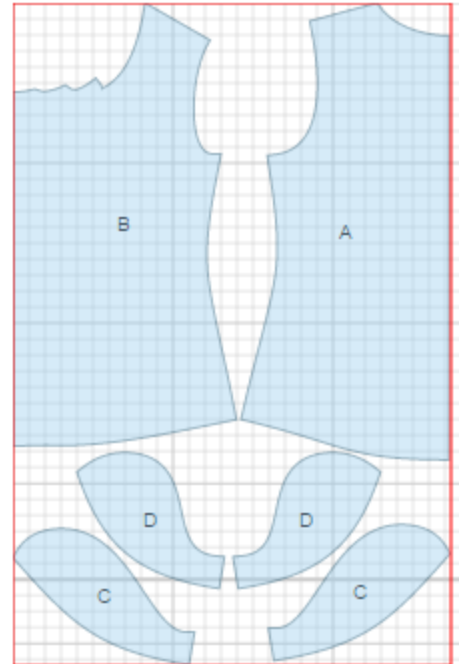
Attention! The amount of fabric needed for your pattern is not included. It will depend on the selected pattern size, the width, and design of the fabric you plan to use. First, print all the paper patterns and lay them out at the width of fabric you plan to use (usually from 90 to 150 cm). Measure how much fabric you will need. Don't forget to account for pieces that need to be cut multiple times and pieces that are cut on the fold.



CUTTING:

Main fabric:

1. Back – cut 1 on fold (A)
2. Front - cut 1 on fold (B)
3. Back sleeve – cut 2 (C)
4. Front sleeve - cut 2 (D)



INSTRUCTIONS:

1. Make and fasten pleats on front, direct pleats towards center.
2. Make a slit on back according to marked line. Cut a bias tape of 4 cm wide. Length is equal to slit double length + 4 cm. Fold bias tape in half lengthwise right side out and press. Finish slit with bias tape.
3. Sew side and shoulder seams. Serge and press seams towards back.
4. Cut a bias tape of 3 cm wide and 5 cm long. Fold bias tape in half lengthwise and make stitch at 0.3 cm from the fold. Trim seam and turn right side out. Adjust the length of the loop.
5. Cut a bias tape of 4 cm wide. Length is equal to neckline + 5 cm. Fold bias tape in half lengthwise right side out and press. Place bias tape along neckline from right side and sew. Clip into seam. Turn bias tape to the inside and topstitch along the fold onto blouse inserting the loop. Press.
6. Sew sleeve seam. Serge and press seam. Serge lower edge of sleeve, turn under, press and topstitch. Make a gathering stitch on sleeve cap and gather fullness. Lay back sleeve over front and pin on upper edge.

7. Sew sleeve into armhole. Serge and press seam. Serge lower edge of the blouse, press seam allowance under, and topstitch.

8. Sew button on back.

TECHNICAL DRAWING:

