

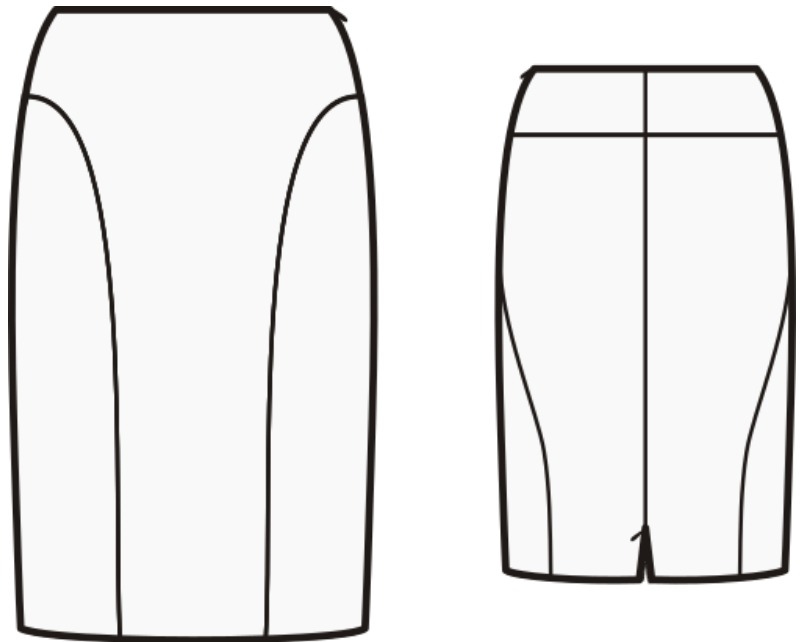
PATTERN OVERVIEW

Made-to-measure pattern:

The pattern is drafted by our proprietary software specifically for your measurements that you supply when making an online order. We strongly recommend that you request a free preview to check the style lines and the amount of fabric needed before ordering the paid version.

Pattern features:

Straight skirt with waistband facing and front insert, zipper in left side seam. The skirt sits at natural waistline, the length is at center of kneecap, ease around waist is approx. 1", ease around hips approx. 1.5" depending on the size.



Recommendations on fabric: wool or semi-wool, dress fabric, suiting fabric, bottom weight woven fabric.

You will also need: fusible interfacing, 1 zipper (the length in cm and inches is mentioned on the pattern piece, 1 hook and eye, 1 zipper for center back seam decoration.

Seam allowances:

If the pattern has double contour the seam allowances are included and are as follows: $\frac{5}{8}$ inch on all seams.

Attention! Seam allowances are NOT included by default and need to be added when laying out and cutting details if your pattern has single contour.

Fabric requirements:

To estimate fabric requirements, get a free preview for the pattern in your size at www.Lekala.net and use [Online Fabric Estimator](#). Alternatively you may print all the paper patterns and lay them out at the width of fabric you plan to use (usually 44 inches to 60 inches) to see how much fabric you will need. Don't forget to count pair parts and symmetrical parts.

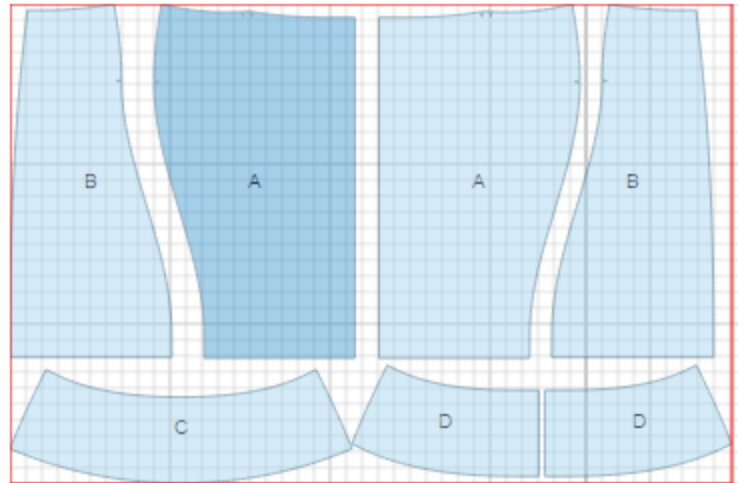
When sewing the garment, pay attention to notches, they must match up.

CUTTING:

Lay pattern pieces out using the straight of grain line. Some pieces may be cut on the fold. This is noted on the pattern piece. Mark all notches and other design features such as darts, pleats etc. from the pattern onto your fabric.

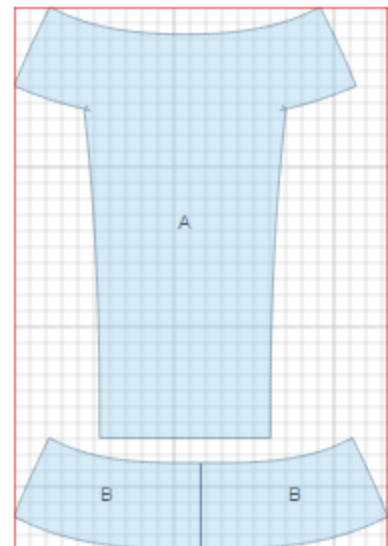
Main fabric 1:

1. Back - cut 2 (A)
2. Side front - cut 2 (B)
3. Front facing - cut 1 (C)
4. Back facing - cut 2 (D)



Main fabric 2:

1. Center front - cut 1 (A)
2. Back yoke - cut 2 (B)



Fusible interfacing:

1. Back Facing - cut 2 (D)
2. Front Facing - cut 1 (C)

* The capital letters in brackets correspond to pattern blocks as seen in Online Fabric Estimator and in sample layouts on the right.

INSTRUCTIONS:

1. Apply fusible interfacing to front facing and back facing.
2. Sew back yokes, press seam open and serge edges.
3. Sew backs along center line leaving a slit in lower part of seam for decorative zipper. Press seam open and serge edges. Install decorative zipper with slider down.
4. Sew back to back yoke, serge and press seam upwards.
5. Sew side fronts to center front, clip seam on curves, serge and press towards center.
6. Sew right side seam, press open and serge edges.
7. Sew left side seam, leaving a slit for zipper. Press seam open, including opening for zipper.
8. Sew in a lapped zipper according to zipper instructions that come with the packet.
9. Sew side seams of facings.
10. Serge lower edge of facing.
11. Pin facing, right sides together, to waistline, matching side seams and center front line. The seam allowances of facings should line up with the lapped zipper. Sew, and grade seam allowance.
12. Press facing to inside. Slip stitch facings to seam allowances along side seams.
13. Slip stitch short ends of facings to zipper tape. Sew hook and eye near waist on the inside of skirt.
14. Hem skirt by hand or machine as desired.

*If you have any further questions regarding the pattern,
please don't hesitate to contact us at info@sewist.com.*

We are always happy to help!
