

PATTERN OVERVIEW

Made-to-measure pattern:

The pattern is drafted by our proprietary software specifically for your measurements that you supply when making an online order. We strongly recommend that you request a free preview to check the style lines and the amount of fabric needed before ordering the paid version.

Pattern features:

Pencil skirt with waistband facing, front wrap, zipper in center back seam. The skirt sits at natural waistline, the length is at center of kneecap, ease around waist is approx. 1", ease around hips approx. 1.5" depending on the size.

Recommendations on fabric: wool or semi-wool, dress fabric, suiting fabric, bottom weight woven fabric.

You will also need: fusible interfacing, 1 zipper (the length in cm and inches is mentioned on the pattern piece).

Seam allowances:

If the pattern has double contour the seam allowances are included and are as follows: $\frac{5}{8}$ inch on all edges. hem of skirt – 1.5 inch.

Attention! Seam allowances are NOT included by default and need to be added when laying out and cutting details if your pattern has single contour.

Fabric requirements:

To estimate fabric requirements, get a free preview for the pattern in your size at www.Lekala.net and use [Online Fabric Estimator](#). Alternatively you may print all the paper patterns and lay them out at the width of fabric you plan to use (usually 44 inches to 60 inches) to see how much fabric you will need. Don't forget to count pair parts and symmetrical parts.

When sewing the garment, pay attention to notches, they must match up.



CUTTING:

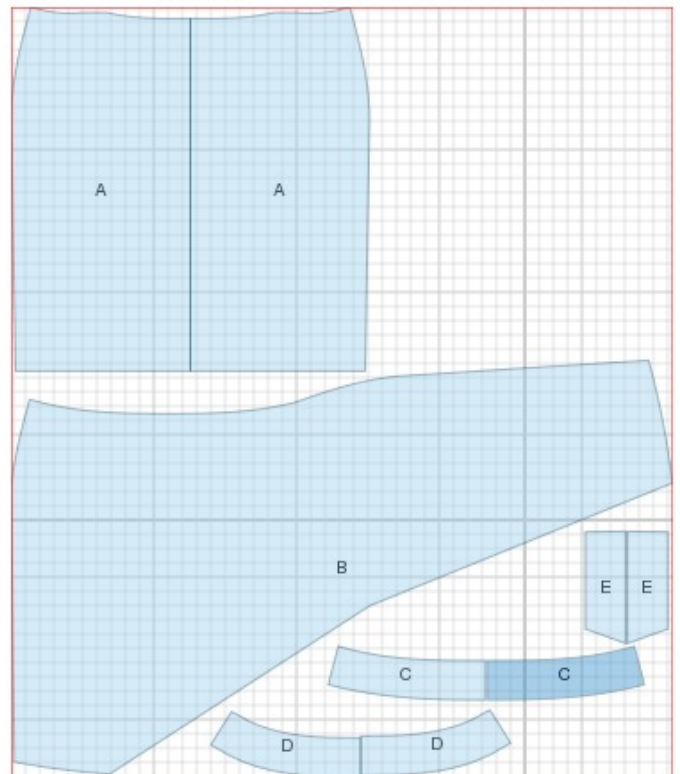
Lay pattern pieces out using the straight of grain line. Some pieces may be cut on the fold. This is noted on the pattern piece. Mark all notches and other design features such as darts, pleats etc. from the pattern onto your fabric.

Main fabric:

1. Back - cut 2 (A)
2. Front - cut 1 (B)
3. Front facing - cut 2 (C)
4. Back facing - cut 2 (D)
5. Strap - cut 2 (E)

Fusible interfacing:

1. Front facing - cut 2 (C)
2. Back facing - cut 2 (D)
3. Strap - cut 1 (E)

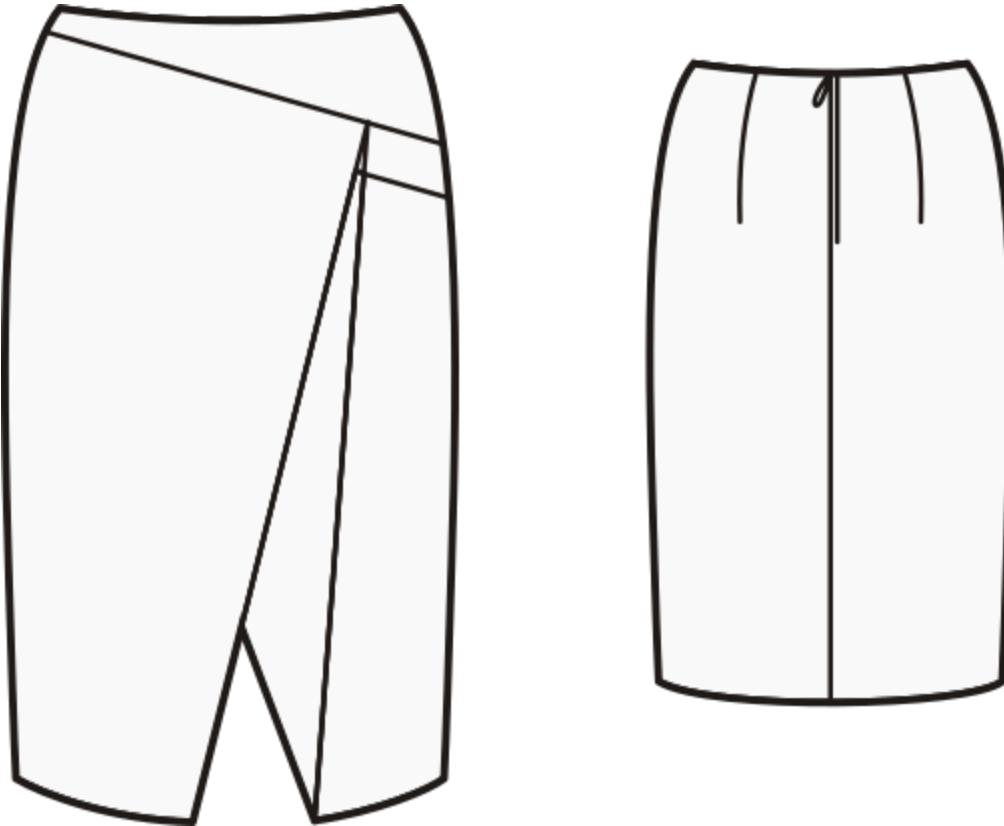


* The capital letters in brackets correspond to pattern blocks as seen in Online Fabric Estimator.

INSTRUCTIONS:

1. Apply fusible interfacing to listed pieces.
2. Sew darts on backs, press towards center. Serge center back edges separately. Sew center back seam from zipper mark down to hem. Press seam open pressing slit for zipper.
3. Sew in a lapped zipper according to zipper instructions that come with the packet.
4. Finish vertical edge of front piece with bias tape or turning under and topstitching.
5. Place strap pieces right sides together and sew long sides. Serge short square edge of strap. Turn strap out, straighten, and press.
6. Sew short square edge of strap to front according to marks on front pattern piece. Fold front piece according to marking and pin.
7. Sew side seams inserting strap into left side seam. Serge and press seams towards back.
8. Sew side seams of facings.
9. Serge lower edge of facing.
10. Pin facing, right sides together, to waistline, matching side seams. The seam allowances of facings should line up with the lapped zipper. Sew, and grade seam allowance.
11. Press facing to inside. Slip stitch facings to seam allowances along side seams.
12. Slip stitch short ends of facings to zipper tape. Sew hook and eye near waist on the inside of skirt.
13. Hem skirt by hand or machine as desired.

TECHNICAL DRAWING:



*If you have any further questions regarding the pattern,
please don't hesitate to contact us at info@sewist.com.
We are always happy to help!*