

Recommendations on fabric: natural or mixed dress fabric of two colours.

Seam allowances: all seams – 1.0 cm.

Note on seam allowances:

- If the pattern has double contour the seam allowances are included. They are 1 cm unless specified otherwise.
- If the pattern has single contour, the seam allowances are NOT included and need to be added when laying out the pattern.

Note on length of fabric:

Attention! The amount of fabric needed for your pattern is not included. It will depend on the selected pattern size, the width, and design of the fabric you plan to use. First, print all the paper patterns and lay them out at the width of fabric you plan to use (usually from 90 to 150 cm). Measure how much fabric you will need. Don't forget to account for pieces that need to be cut multiple times and pieces that are cut on the fold.

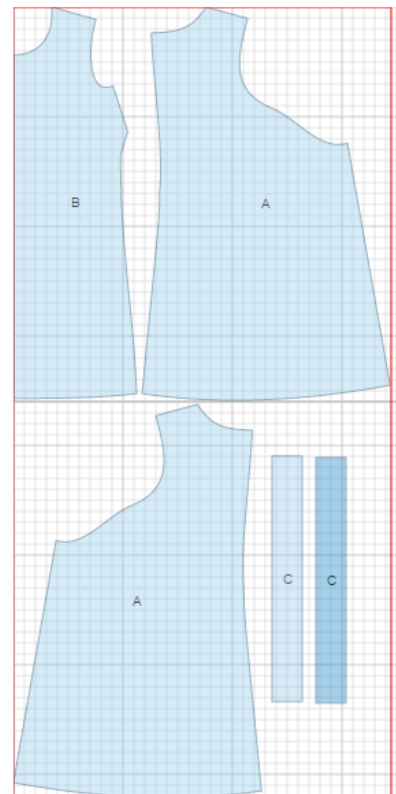
CUTTING:

Main fabric 1:

1. Back – cut 2 (A)
2. Front – cut 1 on fold (B)
3. Front Tie – cut 2 (C)

Main fabric 2:

1. Back – cut 2 (A)
2. Front – cut 1 on fold (B)



INSTRUCTIONS:

1. Sew darts on fronts and press upwards.

Cut a tie of 4 cm wide. Length is equal to chest circumference. Fold tie in half lengthwise and press. Press edges towards center. Fold in half and sew the edge of tie. Cut into two equal pieces.

2. Pin outer and inner fronts, right sides together, inserting a cut tie at in corner of upper side seam and underarm seam. Sew along neckline, armholes, side seams and lower edge. Clip seams on curves, trim in corners, turn piece out through the shoulder edge and press. The ties are tied in the back underneath the back of the dress.

3. Fold front tie in half, right sides together, and sew one long side and one short side. Trim seams in corners and turn ties right side out.

4. Pin outer and inner backs, right sides together, and sew along neckline and armholes. Clip seams on curves. With right sides together, match shoulder edges of back and front. Insert front shoulders between back shoulders. Pin, and sew the shoulder seam. (Using a zipper foot makes it easier to sew in the small space.)

5. Leave the front sandwiched inside the back. Sew the the rest of the back/wrap seams, inserting front ties at corners. Leave an opening of about 6 to 8 inches in lower vertical seam for turning dress right side out. Press seams and slipstitch opening closed.

TECHNICAL DRAWING:

