

Recommendations on fabric: natural or mixed light-weight fabric suitable for blouses (cotton, viscose, polyester)

You will also need: fusible interfacing, 9 buttons.

Seam allowances: on hem – 1.2 cm, hem of sleeve – 2.0 cm, other seams – 1.0 cm.

Note on seam allowances:

- If the pattern has double contour the seam allowances are included. They are 1 cm unless specified otherwise.
- If the pattern has single contour, the seam allowances are NOT included and need to be added when laying out the pattern.

Note on length of fabric:

Attention! The amount of fabric needed for your pattern is not included. It will depend on the selected pattern size, the width, and design of the fabric you plan to use. First, print all the paper patterns and lay them out at the width of fabric you plan to use (usually from 90 to 150 cm). Measure how much fabric you will need. Don't forget to account for pieces that need to be cut multiple times and pieces that are cut on the fold.



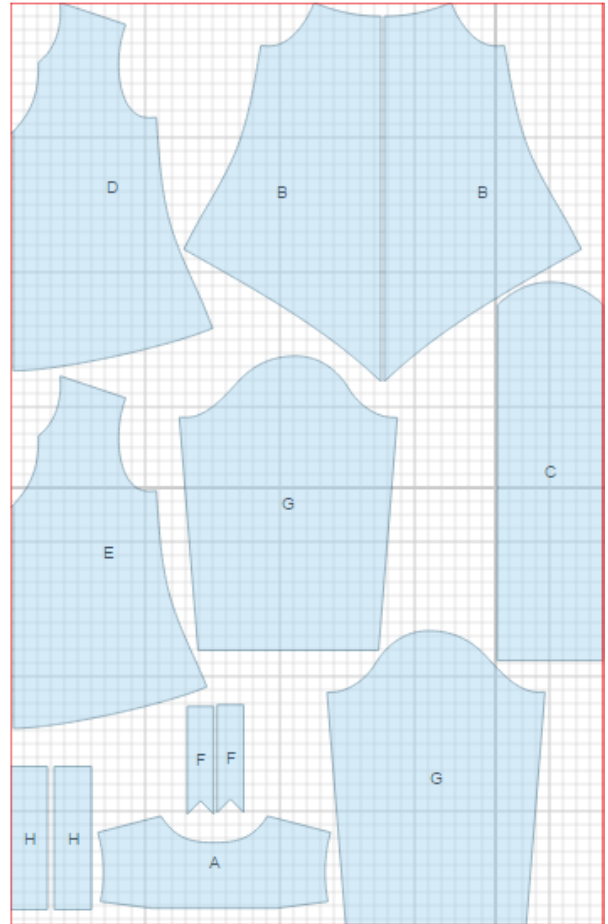
CUTTING:

Main fabric:

1. Back yoke – cut 1 (A)
2. Side back - cut 2 (B)
3. Back insert - cut 1 (C)
4. Outer front - cut 1 on fold (D)
5. Inner front - cut 1 on fold (E)
6. Sleeve – cut 2 (G)
7. Front placket - cut 2 (F)
8. Sleeve strap – cut 2 (H)

Fusible interfacing:

1. Front placket - cut 2 (F)



INSTRUCTIONS:

1. Apply fusible interfacing to listed pieces.
2. Cut a bias tape of 2.5x15 cm. Fold bias tape in half lengthwise right side inwards and stitch at 0.3 cm from the fold. Cut seam off close to stitch, turn tape out and straighten. Cut loops of approximately 4 cm each.
3. Sew loops to right side back according to marking. Sew insert to side backs, press seams towards side seams and serge.

4. Sew yoke to back. Serge and press seams upwards.
5. Cut a bias tape of 4 cm wide. Length is equal to back neckline + 5 cm. Fold bias tape in half lengthwise right side out and press. Place bias tape onto neckline from right side and sew. Clip into seam.
6. Fold front plackets in half lengthwise right sides together and sew upper edge. Trim seam in corners, turn plackets right side out, straighten and press.
7. Sew plackets to right side of outer front on long edge, leaving 1 cm to lower point. Trim front's seam allowances in corners, leaving 0.1 cm to the stitch. Set ends of plackets inwards and sew fastening lower edge.
8. Cut inner part of front between longitudinal lines, cut to corners at 1 cm from the cross line. Place outer and inner fronts right sides together and sew on neckline. Clip into curves, turn details right side out, straighten and press. Turn under seam allowances of placket slit on inner front and sew them to seam allowances of placket.
9. Serge lower edge of inner placket, turn under, press and topstitch. Pin outer and inner fronts on edges and then treat as one detail.
10. Place front and back right sides together on shoulder edges, placing front between back and bias tape. Sew shoulder seams, serge and press seams towards back. Turn bias tape to wrong side and topstitch along the fold onto main detail. Press seam.
11. Fold sleeve straps in half along center line, right sides together, and sew on long and one short edge. Trim seam in corners. Turn strap out, straighten and press. Serge open short edge. Topstitch straps according to marking from the wrong side of sleeves.
12. Sew sleeve into open armholes, serge and press seams. Sew sleeve seams and side seams. Serge and press seams towards back.
13. Serge lower edge of the blouse, press seam allowance under and topstitch. Turn lower edge of sleeve twice at 1 cm, press and topstitch.
14. Make buttonholes on sleeve straps. Sew buttons on sleeves. Sew buttons on left side back. Adjust front plackets and fasten them with buttons, sewing buttons through.

TECHNICAL DRAWING:

