

Recommendations on fabric: natural or mixed heavy-weight fabric suitable for blouses.

You will also need: fusible interfacing, invisible zipper.

Seam allowances: on hems – 1.5 cm, other seams – 1.0 cm.

Note on seam allowances:

- If the pattern has double contour the seam allowances are included. They are 1 cm unless specified otherwise.
- If the pattern has single contour, the seam allowances are NOT included and need to be added when laying out the pattern.

Note on length of fabric:

Attention! The amount of fabric needed for your pattern is not included. It will depend on the selected pattern size, the width, and design of the fabric you plan to use. First, print all the paper patterns and lay them out at the width of fabric you plan to use (usually from 90 to 150 cm). Measure how much fabric you will need. Don't forget to account for pieces that need to be cut multiple times and pieces that are cut on the fold.



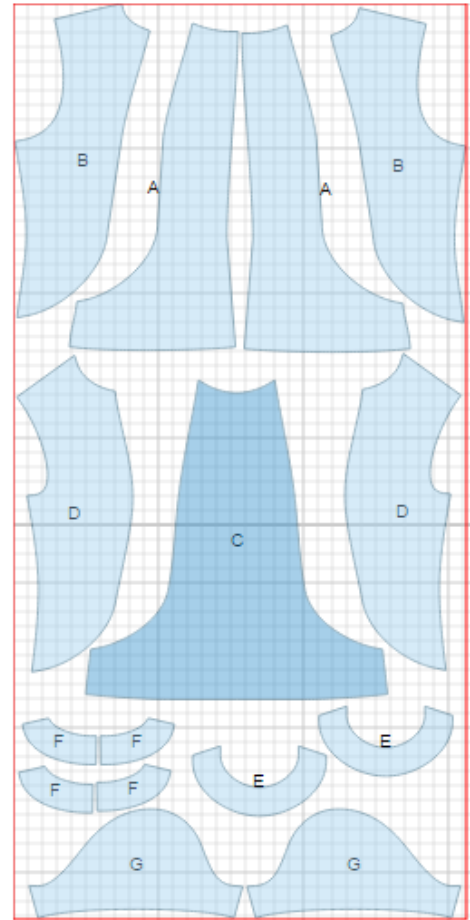
CUTTING:

Main fabric:

1. Center back – cut 2 (A)
2. Side back - cut 2 (B)
3. Center front - cut 1 (C)
4. Side front - cut 2 (D)
5. Sleeve – cut 2 (G)
6. Front neck yoke/facing - cut 2 (E)
7. Back neck yoke/facing - cut 4 (F)

Fusible interfacing:

1. Front neck facing - cut 1 (E)
2. Back neck facing - cut 2 (F)



INSTRUCTIONS:

1. Apply fusible interfacing to listed pieces.
2. Sew center backs to side backs. Serge and press seams towards center. Serge back center edges separately. Sew back center seam from zipper mark down to hem. Press seam open.
3. Sew center to side fronts. Serge and press seams towards center.
4. Sew shoulder and side seams. Serge and press seams towards back.
5. Sew shoulder edges of yoke and yoke facings. Press seams apart. Pin yoke and yoke facings right sides together and stitch on neckline. Serge outer edge of facing. Sew yoke to blouse neck edge. Trim seam, and turn facing to wrong side.
6. Sew in zipper.

7. Baste facing to shoulder seams and zipper tape.

8. Sew sleeve seam. Serge and press seam towards back. Make a gathering stitch along sleeve cap to adjust ease. Sew sleeve into armhole matching notches and adjusting ease. Serge seam.

9. Serge lower edge of the blouse and sleeves, press seam allowance under, and topstitch.

TECHNICAL DRAWING:

