

Recommendations on fabric: natural or mixed fabric suitable for blouses, lace.

You will also need: fusible interfacing, invisible zipper, buttons.

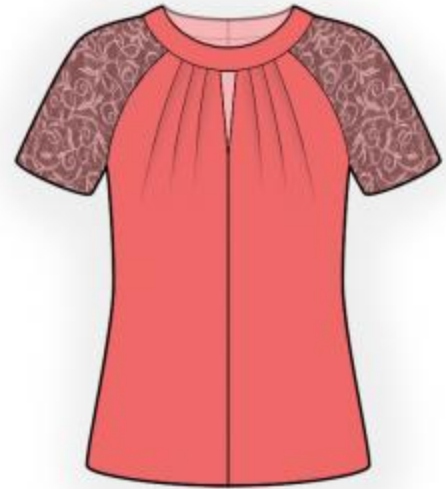
Seam allowances: hem of dress and sleeve – 1.5 cm, other seams – 1 cm.

**Note on seam allowances:**

- If the pattern has double contour the seam allowances are included. They are 1 cm unless specified otherwise.
- If the pattern has single contour, the seam allowances are NOT included and need to be added when laying out the pattern.

**Note on length of fabric:**

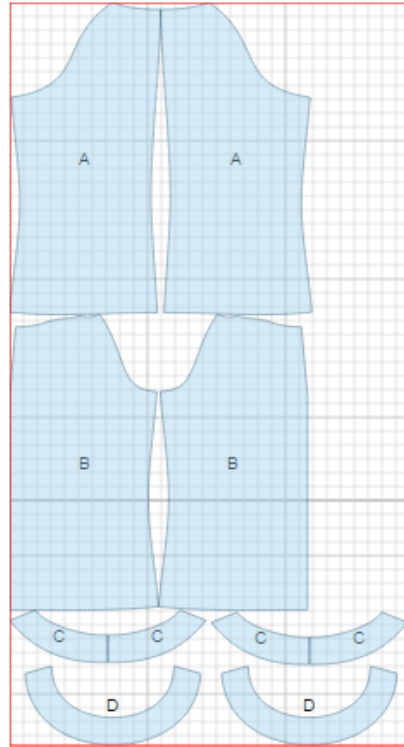
*Attention! The amount of fabric needed for your pattern is not included. It will depend on the selected pattern size, the width, and design of the fabric you plan to use. First, print all the paper patterns and lay them out at the width of fabric you plan to use (usually from 90 to 150 cm). Measure how much fabric you will need. Don't forget to account for pieces that need to be cut multiple times and pieces that are cut on the fold.*



## CUTTING:

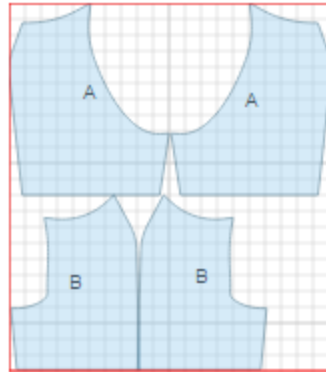
### Main fabric:

1. Back – cut 2 (A)
2. Front – cut 2 (B)
3. Back neck yoke/facing - cut 4 (C)
4. Front neck yoke/ facing - cut 2 (D)



### Lace:

1. Back sleeve - cut 2 (A)
2. Front sleeve - cut 2 (B)



### Fusible interfacing:

1. Back neck facing - cut 2
2. Front neck facing - cut 1

---

## INSTRUCTIONS:

1. Apply fusible interfacing to neck facings.
2. Serge center back edges separately. Sew center back seam from slit mark down to hem. Press seam open. Sew in zipper.
3. Serge center front edges separately. Sew center front seam from slit mark down to hem. Press seam open. Topstitch along slit at 0.3 cm from the edge. Make pleats on neckline and fasten them.
4. Sew back sleeve to back, serge and press seam toward sleeve. Sew front sleeve to front, serge and press seam toward sleeve. Sew upper sleeve seam, serge and press seam towards back.
5. Sew side seams together with sleeve seams, serge seams and press toward back.
6. Cut a bias tape 2.5X10 cm. Fold bias tape in half lengthwise right side inwards and stitch at 0.3 cm from the fold. Cut seam allowances off close to stitch. Turn out and straighten. Cut loops of approx. 4 cm each.
7. Sew shoulder seams of neck yokes and yoke facings, press seams open. Place yoke facing and yoke right sides together and sew along neckline, inserting loops on right side. Clip seam on curves, turn yoke right side out and press. Sew yoke to neckline, press seam towards facing. Press lower edge of yoke facing to wrong side and slipstitch into yoke connecting seam.
8. Serge hem of blouse and lower edge of sleeves, turn under, press and topstitch.

TECHNICAL DRAWING:

