

Recommendations on fabric: suiting or heavy-weight natural or mixed dress fabric of two colours.

You will also need: 2 buttons, fusible interfacing, invisible zipper.

Seam allowances: hem of dress – 2.0 cm, along vent edge – 6 cm, other seams – 1 cm.

**Note on seam allowances:**

- If the pattern has double contour the seam allowances are included. They are 1 cm unless specified otherwise.
- If the pattern has single contour, the seam allowances are NOT included and need to be added when laying out the pattern.

**Note on length of fabric:**

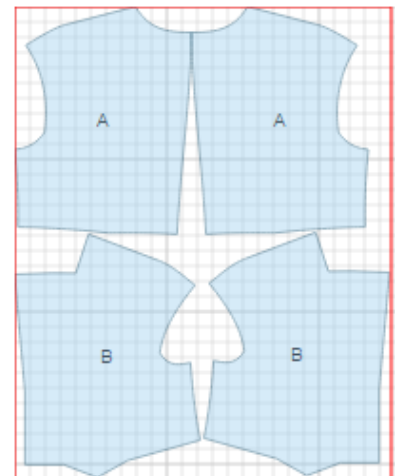
*Attention! The amount of fabric needed for your pattern is not included. It will depend on the selected pattern size, the width, and design of the fabric you plan to use. First, print all the paper patterns and lay them out at the width of fabric you plan to use (usually from 90 to 150 cm). Measure how much fabric you will need. Don't forget to account for pieces that need to be cut multiple times and pieces that are cut on the fold.*



**CUTTING:**

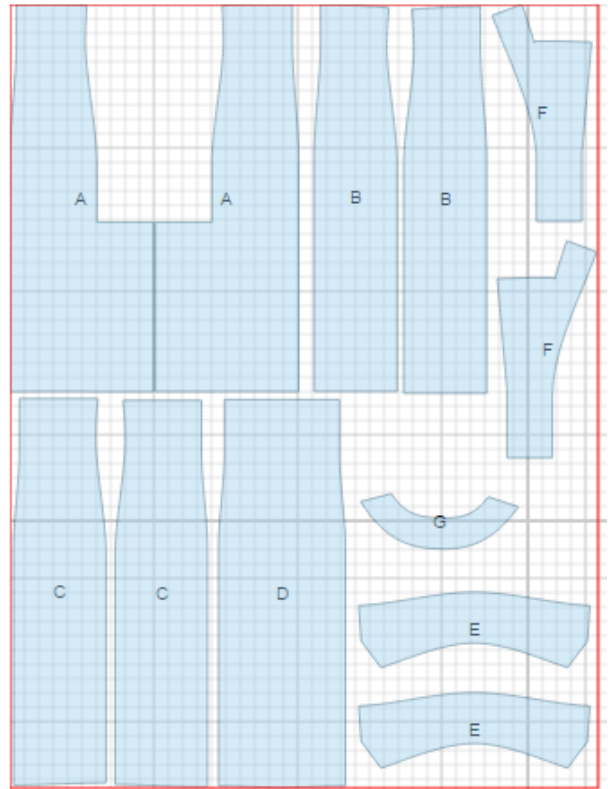
Main fabric 1:

1. Upper back – cut 2 (A)
2. Upper front – cut 2 (B)



Main fabric 2:

1. Center lower back - cut 2 (A)
2. Side lower back - cut 2 (B)
3. Center lower front - cut 1 (D)
4. Side lower front - cut 2 (C)
5. Collar - cut 2 (E)
6. Center front facing - cut 2 (F)
7. Back neck facing - cut 1 (G)



Fusible interfacing:

1. Collar - cut 1
2. Center front facing - cut 2
3. Back neck facing - cut 1

**INSTRUCTIONS:**

1. Apply fusible interfacing to lower collar and front facings.
2. Sew darts on upper back, press darts towards center. Sew center back seam of upper pieces, serge and press towards left side.
3. Make and fasten darts on upper fronts. Folds are directed downwards.
4. Sew shoulder seams, serge and press towards back.

- 
5. Place upper and lower collars right sides together and sew on outer edge and ends. Start and end stitch exactly at marked line of collar connecting seam. Trim seam in corners, clip at mark. Turn collar out, straighten and press.
  6. Sew shoulder seams of back neck facing / center front facing. Press seams open.
  7. Place front facing onto front, right sides together, pin and sew along the edge up to the collar connection notch. Trim seams in corners. Turn front bands out, straighten seams. Lay right front on left and fasten on lower edge.
  8. Sew lower collar into neckline, upper collar into back neck facing/front facing edge.
  9. On left lower back, along vertical vent edge, cut off 5 cm. Apply fusible interfacing to wrong side of the vent on both back pieces. On right side mark center seam line (vent fold-line). Press left part along vent fold line. On right part press to wrong side only allowance of right side of vent (6 cm). Match backs on center seam and fasten on upper edge of vent. Serge center back seam separately on each side. Serge vent allowances. Sew center back seam from mark to vent corner. Trim corner of vent seam allowance on right part. Press center seam open, press vent allowances and fasten them on right side with machine stitch.
  10. Sew center back to side backs, serge and press seams towards center. Sew center front to side fronts, serge and press seams towards center.
  11. Sew upper back to lower back, serge and press seam upwards. Sew upper front to lower front, serge and press seam upwards.
  12. Sew right side seam. Press seam towards back and serge. Sew left side seam from armhole to first notch and from second notch down to hem. Sew in zipper.
  13. Cut a bias tape of 4 cm wide. Length is equal to armhole + 5 cm. Fold bias tape lengthwise right side out and press. Place bias tape onto armhole, from the right side, and sew. Clip into seam. Turn bias tape to wrong side, and topstitch along the fold.
  13. Serge lower edge of dress, turn under, press, and slipstitch.
  14. Make buttonholes on right front, sew buttons on left front.

TECHNICAL DRAWING:

