

Recommendations on fabric: natural or mixed light-weight blouse or dress fabrics.

You will also need: 9 buttons, fusible interfacing, elastic.

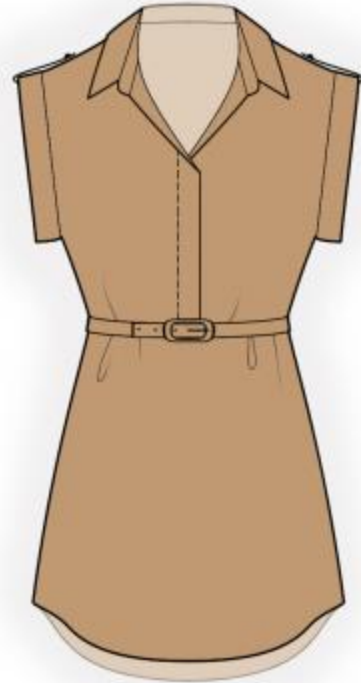
Seam allowances: on hem – 1.2 cm, other seams – 1.0 cm.

**Note on seam allowances:**

- If the pattern has double contour the seam allowances are included. They are 1 cm unless specified otherwise.
- If the pattern has single contour, the seam allowances are NOT included and need to be added when laying out the pattern.

**Note on length of fabric:**

*Attention! The amount of fabric needed for your pattern is not included. It will depend on the selected pattern size, the width, and design of the fabric you plan to use. First, print all the paper patterns and lay them out at the width of fabric you plan to use (usually from 90 to 150 cm). Measure how much fabric you will need. Don't forget to account for pieces that need to be cut multiple times and pieces that are cut on the fold.*



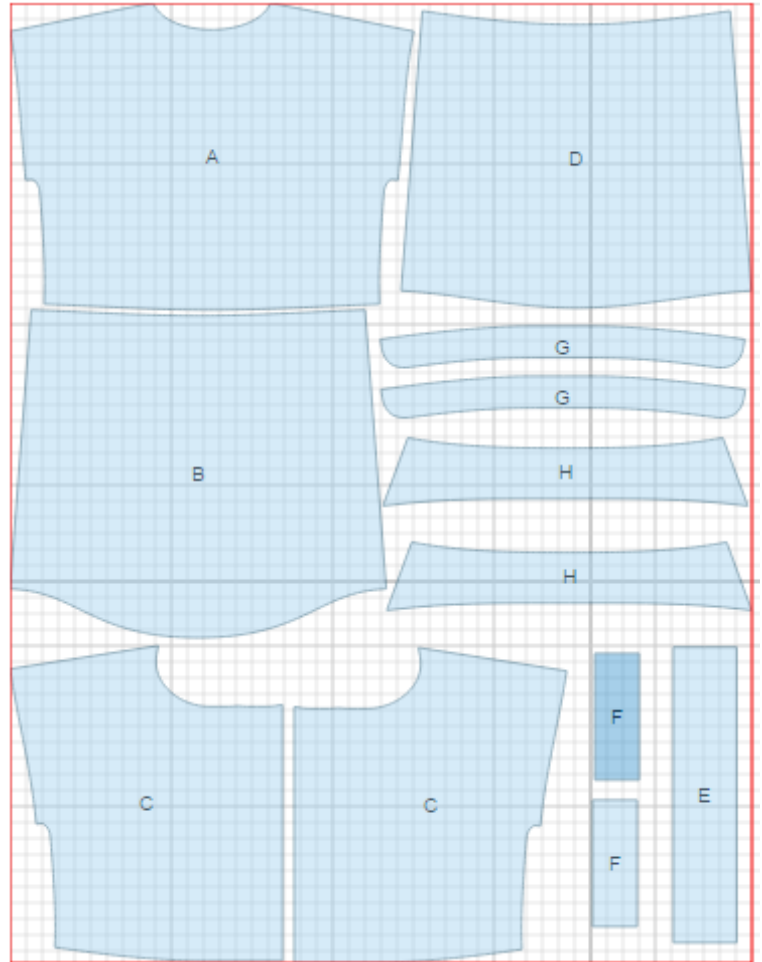
## CUTTING:

### Main fabric:

1. Upper back – cut 1 (A)
2. Lower back – cut 1 (B)
3. Upper front - cut 2 (C)
4. Lower front - cut 1 (D)
5. Collar stand - cut 2 (G)
6. Collar - cut 2 (H)
7. Sleeve – cut 2 (E)
8. Shoulder strap - cut 2 (F)

### Fusible interfacing:

1. Collar stand - cut 1 (G)
2. Collar - cut 1 (H)



## INSTRUCTIONS:

1. Apply fusible interfacing to listed pieces as well as to placket on upper front.
2. Place upper and lower collars right sides together and stitch ends and outer side. Trim seam in corners, turn collar out, straighten and press. Place collar stands right sides together, insert collar between them, match notches and sew, stitching ends of collar stand. Start and end stitch exactly at marked line of collar connecting seam. Turn collar out, straighten and press.

3. Right upper front: turn center front under and press according to marked lines labeled "front band edge" and "hidden placket edge". Make decorative stitch along inner edge of placket at 3 cm from the front band edge. Turn inner part of placket towards front band and press. Make buttonholes on inner part.
4. Left upper front: cut front on marked line labeled "inner edge of placket" + 1 cm. Turn closure placket under twice: first at 1 cm, then at 3 cm and make decorative stitch along inner edge of placket. Lay right front onto left and then treat as one piece.
5. Sew lower front to upper front and lower back to upper back. Serge and press seams upwards.
6. Sew shoulder and side seams. Serge seams and press toward back.
7. Sew outer collar stand to neckline. Turn the edge of inner collar stand under, and topstitch into connecting seam.
8. Sew sleeve into ring, press seam open. Fold sleeve in half lengthwise right side out, place onto wrong side of the armhole and sew. Serge seam, turn sleeve onto right side and press.
9. Fold sleeve strap in half right sides together and sew on long sides and one short side. Trim seams in corners, turn right side out, straighten and press. Serge short open edge. Topstitch strap into sleeve connecting seam on shoulder from the wrong side.
10. Serge lower edge of tunic. Turn under, press, and topstitch.
11. Use elastic that is equal to waist circumference. Topstitch elastic on waist seam from the wrong side, stretching it.
12. Make buttonholes on straps and collar. Sew buttons on left front, collar, and shoulder seams.

Wear tunic with a decorative belt, if desired.

TECHNICAL DRAWING:

