

Recommendations on fabric: natural or mixed fabric suitable for dresses.

You will also need: fusible interfacing, invisible zipper, piping or bias trim (length is shown on front pattern piece).

Seam allowances: on hem – 2.0 cm, other seams – 1.0 cm.

Note on seam allowances:

- If the pattern has double contour the seam allowances are included. They are 1 cm unless specified otherwise.

- If the pattern has single contour, the seam allowances are NOT included and need to be added when laying out the pattern.

Note on length of fabric:

Attention! The amount of fabric needed for your pattern is not included. It will depend on the selected pattern size, the width, and design of the fabric you plan to use. First, print all the paper patterns and lay them out at the width of fabric you plan to use (usually from 90 to 150 cm). Measure how much fabric you will need. Don't forget to account for pieces that need to be cut multiple times and pieces that are cut on the fold.



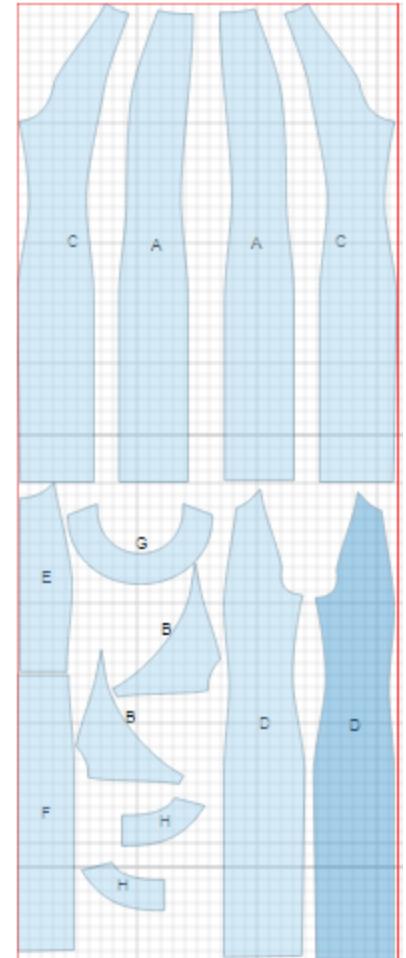
CUTTING:

Main fabric:

1. Center back – cut 2 (A)
2. Side back – cut 2 (C)
3. Side front – cut 2 (D)
4. Center upper front – cut 1 on fold (E)
5. Center lower front – cut 1 on fold (F)
6. Sleeve - cut 2 (B)
7. Back neck facing – cut 2 (H)
8. Front neck facing - cut 1 (G)

Fusible interfacing:

1. Back neck facing – cut 2 (H)
2. Front neck facing - cut 1 (G)



INSTRUCTIONS:

1. Apply fusible interfacing to facings.
2. Serge separately center back edges. Sew center back seam from zipper mark down to hem. Press seam open, pressing the slit. Sew in zipper. Sew side backs to center backs, inserting piping. Serge and press seams towards center.
3. Sew upper center front to lower center front. Serge and press seam upwards. Sew side front to center front, inserting piping. Serge and press seams towards center.
4. Sew sleeve to front and back, inserting piping into seam. Serge and press seam towards sleeve.
5. Sew side seams. Serge and press seams toward back.
6. Sew shoulder seams of facings, press seams open. Serge outer edge. Place facing onto neckline and sew. Clip into seam and turn facing to wrong side. Baste facing to shoulder seam and to center back seam.

7. Cut a bias tape (or use purchased bias tape) 4 cm wide for facing the armholes. Fold bias tape in half right side out and press. Place bias tape onto armhole from the right side and sew. Turn bias tape to wrong side and topstitch along the fold from the right side of garment.

8. Serge lower edge of the dress, fold hem allowance onto wrong side and topstitch.

TECHNICAL DRAWING:

