

Recommendations on fabric: natural or mixed fabric suitable for dresses.

You will also need: fusible interfacing, invisible zipper, two buttons, bias tape of contrast colour (the length is shown on front pattern piece)..

Seam allowances: hem of dress and sleeve – 1.5 cm, strap and bow edges – 0 cm, other seams – 1 cm.

Note on seam allowances:

- If the pattern has double contour the seam allowances are included. They are 1 cm unless specified otherwise.
- If the pattern has single contour, the seam allowances are NOT included and need to be added when laying out the pattern.

Note on length of fabric:

Attention! The amount of fabric needed for your pattern is not included. It will depend on the selected pattern size, the width, and design of the fabric you plan to use. First, print all the paper patterns and lay them out at the width of fabric you plan to use (usually from 90 to 150 cm). Measure how much fabric you will need. Don't forget to account for pieces that need to be cut multiple times and pieces that are cut on the fold.



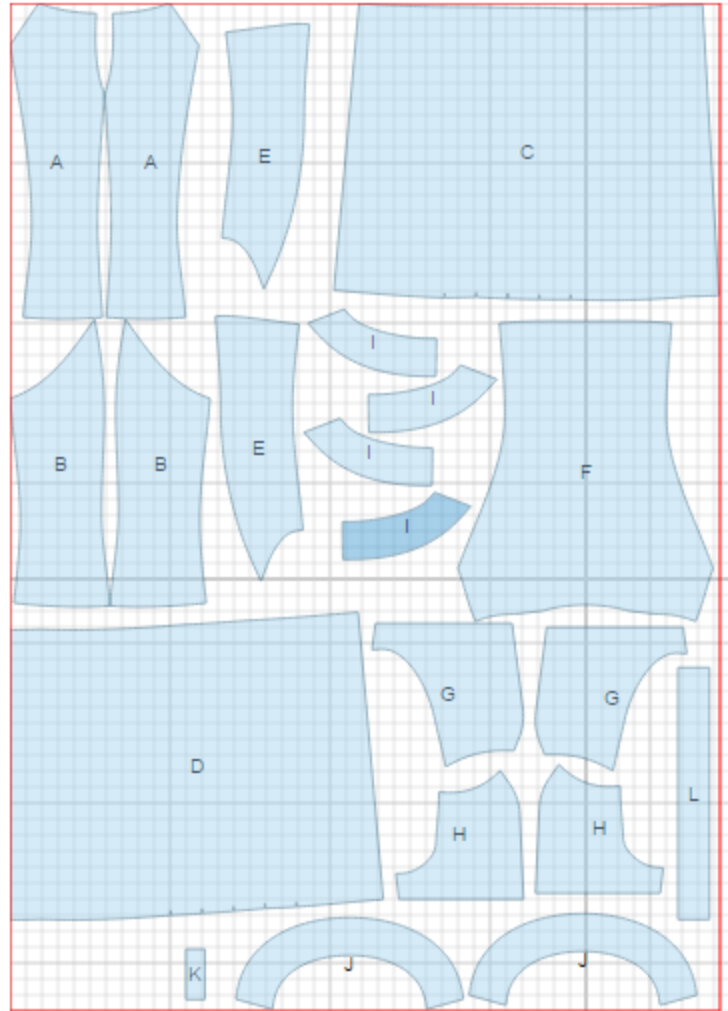
CUTTING:

Main fabric:

1. Center back – cut 2 (A)
2. Side back – cut 2 (B)
3. Center front – cut 1 (F)
4. Side front – cut 2 (E)
5. Lower back – cut 1 on fold (C)
6. Lower front – cut 1 on fold (D)
7. Back sleeve - cut 2 (G)
8. Front sleeve - cut 2 (H)
9. Back neck yoke/facing - cut 4 (I)
10. Front neck yoke/facing - cut 2 (J)
11. Bow - cut 1 (L)
12. Strap - cut 1 (K)

Fusible interfacing:

1. Back neck facing - cut 2
2. Front neck facing - cut 1



INSTRUCTIONS:

1. Apply fusible interfacing to neck facings.
2. Sew center backs to side backs, serge and press seams toward center. Sew center to side fronts, serge and press seams toward center. Make and fasten pleats on center front (folds are directed towards sides).
3. Sew back sleeve to back, serge and press seam toward sleeve. Sew front sleeve to front, serge and press seam toward sleeve. Sew upper sleeve seam, serge and press seam towards back.

-
4. Press bias tape open, then press in half lengthwise right side out and baste to neckline so that bias tape extends 1 cm from marking of facing connection line.
 5. Cut a bias tape of 4 cm wide. Length is equal to the length of the slanted cut on the upper backs + 4 cm. Fold bias tape in half right side out and press. Place bias tape on cut edge from the right side, leaving tails, and sew. Turn bias tape to wrong side, trim seam and topstitch along fold onto main detail. Press seam.
 6. Sew center back seam. Serge and press seam to left side.
 7. For button loops: cut a bias tape of 2.5 cm wide and 10 cm long. Fold bias tape in half right side inwards and sew at 0.3 cm from the fold. Cut seam off close to stitch, turn tape out and straighten. Cut into loops of 4 cm each.
 8. Sew shoulder seams of yoke and yoke neck facings, press seams open. Place yoke and yoke facing right sides together and sew neckline and ends up to the notch, inserting button loops from the right side. Clip seam on curves, turn right side out and press. Sew outer yoke to neckline, press seam toward yoke. Press lower edge of yoke under and topstitch into yoke connecting seam.
 9. Make and fasten pleats on skirt. Sew skirt to bodice, serge and press seams upwards.
 10. Sew right side seam together with sleeve seam, serge seam and press toward back. Serge left side edges separately. Sew left side seam from top down to zipper mark and from skirt/bodice seam down to hem. Sew zipper into left side seam.
 11. Serge lower edge of the dress and sleeves, press hem allowance under and topstitch.
 12. Bow decoration (not shown in diagram). Trim long edges of bow and bow knot with bias tape, serge short edges. Sew bow knot to front neck yoke on the left side. Set bow through the knot and fasten.

Advice: Wear the dress with decorative belt of the same colour as trimming.

TECHNICAL DRAWING:

