

Recommendations on fabric: natural or mixed light-weight suiting fabric.

You will also need: fusible interfacing, lining, 1 button, separable zipper, 2 zippers for pockets, shoulder pads, sleeve heads.

Seam allowances: hem of jacket and hem of sleeve – 3.0 cm; other seams - 1 cm.

Note on seam allowances:

- If the pattern has double contour the seam allowances are included. They are 1 cm unless specified otherwise.

- If the pattern has single contour, the seam allowances are NOT included and need to be added when laying out the pattern.

Note on length of fabric:

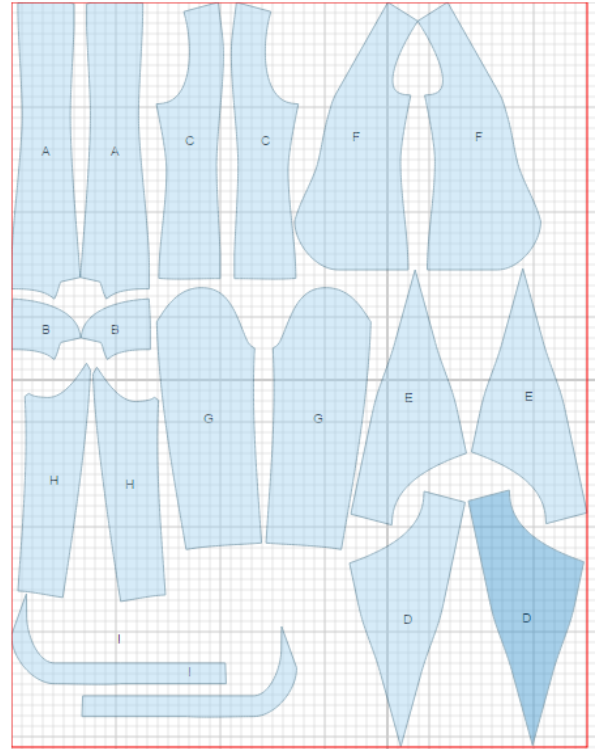
Attention! The amount of fabric needed for your pattern is not included. It will depend on the selected pattern size, the width, and design of the fabric you plan to use. First, print all the paper patterns and lay them out at the width of fabric you plan to use (usually from 90 to 150 cm). Measure how much fabric you will need. Don't forget to account for pieces that need to be cut multiple times and pieces that are cut on the fold.



CUTTING:

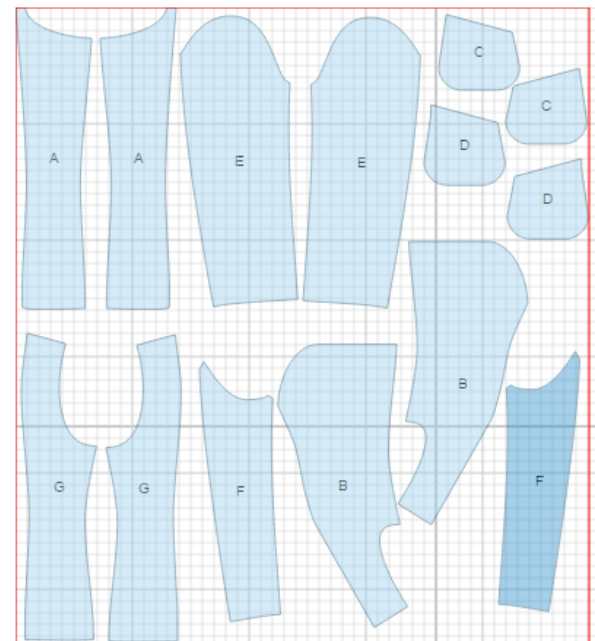
Main fabric:

1. Center back – cut 2 (A)
2. Side back – cut 2 (C)
3. Center front – cut 2 (D)
4. Side front – cut 2 (F)
5. Upper sleeve - cut 2 (G)
6. Lower sleeve – cut 2 (H)
7. Back neck facing – cut 1 (B)
8. Front facing - cut 2 (E)
9. Lower facing - cut 2 (I)



Lining:

1. Center back – cut 2 (A)
2. Side back – cut 2 (G)
3. Side front – cut 2 (B)
4. Upper sleeve - cut 2 (E)
5. Lower sleeve – cut 2 (F)
6. Small pocket bag - cut 2 (C)
7. Large pocket bag - cut 2 (D)



Fusible interfacing: center front, front facing, back neck facing, lower front facing, hem of sleeve.

INSTRUCTIONS:

1. Apply fusible interfacing to listed pieces.
2. Sew center backs to side backs. Press seams towards center. Sew center back seam. Press seam open.
3. Mark pocket place on front. Mark pocket opening. Cut pocket opening. At 1 - 1.5 cm from the end of the pocket make slanting cuts. Turn pocket allowances to the wrong side through the opening, straighten edges. Straighten the end of the pocket from the wrong side. Lay zipper under the pocket edges so that zipper blades show. Sew in zipper. Sew pocket bag with its right side to wrong side of zipper tape. Sew edges of pocket bag.
4. Sew front seam on left front inserting left part of separating zipper. Press seam open. Sew front seam on right front. Press seam open.
5. Sew and press open side and shoulder seams.
6. Sew and press open elbow seam of sleeve. Press lower edge of sleeve. Sew and press open front sleeve seam. Sew in sleeves matching notches, easing in on curves. Sew shoulder pads and sleeve heads.
7. Sew lining together leaving an opening in front right seam of sleeve. Sew shoulder seams of front facings and neck facings. Press seams open. Sew lower facing to front facing. Sew center seam of lower facing, press seam open. Sew lining to front facings and to facing.
8. Place front facing onto jacket right sides together, pin and sew along front band and neckline. Sew right front band inserting right part of zipper. Trim seam in corners. Turn front bands right side out, straighten seams.
9. Sew lining to hem of sleeves. Turn jacket out through the opening in sleeve. Sew the opening closed.

TECHNICAL DRAWING:

