

Recommendations on fabric: natural or mixed, well-draping silk fabric.

You will also need: fusible interfacing.

Seam allowances: hems – 1.5 cm; all other seams – 1 cm.

Note on seam allowances:

- If the pattern has double contour the seam allowances are included. They are 1 cm unless specified otherwise.
- If the pattern has single contour, the seam allowances are NOT included and need to be added when laying out the pattern.

Note on length of fabric:

Attention! The amount of fabric needed for your pattern is not included. It will depend on the selected pattern size, the width, and design of the fabric you plan to use. First, print all the paper patterns and lay them out at the width of fabric you plan to use (usually from 90 to 150 cm). Measure how much fabric you will need. Don't forget to account for pieces that need to be cut multiple times and pieces that are cut on the fold.



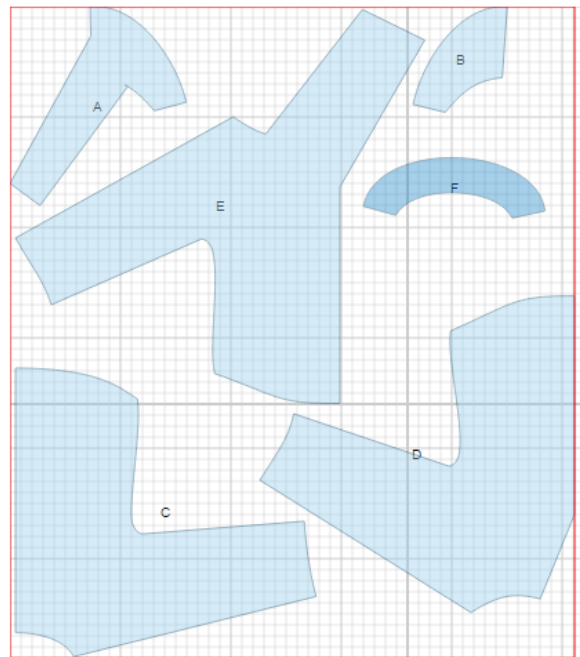
CUTTING:

Main fabric:

1. Back – cut 1 on fold (C)
2. Right front - cut 1 (D)
3. Left front – cut 1 (E)
4. Right front facing – cut 1 (A)
5. Left front facing – cut 1 (B)
6. Back neck facing – cut 1 (F)

Fusible interfacing:

1. Right front facing – cut 1
2. Left front facing – cut 1
3. Back neck facing – cut 1



INSTRUCTIONS:

1. Apply fusible interfacing to listed pieces.
2. Make a gathering stitch on right front from neck edge to mark and gather fullness.
3. Cut a square shaped facing for the right front opening. The length is equal to opening length + 2 cm. Place facing onto opening and stitch on marked lines. Cut carefully between stitches, turn facing to wrong side and press.
4. Sew center front seam. Serge seam and press toward left.. Sew side and sleeve seams. Serge and press towards back. Sew upper seam of sleeve. Serge and press towards back.
5. Sew facings together, press seams open. Serge outer edge.
6. Place facings onto neck, right sides together, and stitch on neckline and long edges of the tail. Straighten short edge of the tail placing edge of facing in center and sew. Trim seams in corners, trim neckline corner on left part and turn right side out. Press neckline and tail. Thread tail through opening created in step 3.
7. Serge hems, fold to wrong side, press, and topstitch.

TECHNICAL DRAWING:

