

Recommendations on fabric: natural or mixed dress fabric, fabric of contrast colour for bodice insert.

You will also need: fusible interfacing, invisible zipper.

Seam allowances: on hem – 1.5 cm, other seams – 1.0 cm.

Note on seam allowances:

- If the pattern has double contour the seam allowances are included. They are 1 cm unless specified otherwise.
- If the pattern has single contour, the seam allowances are NOT included and need to be added when laying out the pattern.

Note on length of fabric:

Attention! The amount of fabric needed for your pattern is not included. It will depend on the selected pattern size, the width, and design of the fabric you plan to use. First, print all the paper patterns and lay them out at the width of fabric you plan to use (usually from 90 to 150 cm). Measure how much fabric you will need. Don't forget to account for pieces that need to be cut multiple times and pieces that are cut on the fold.



CUTTING:

Main fabric 1:

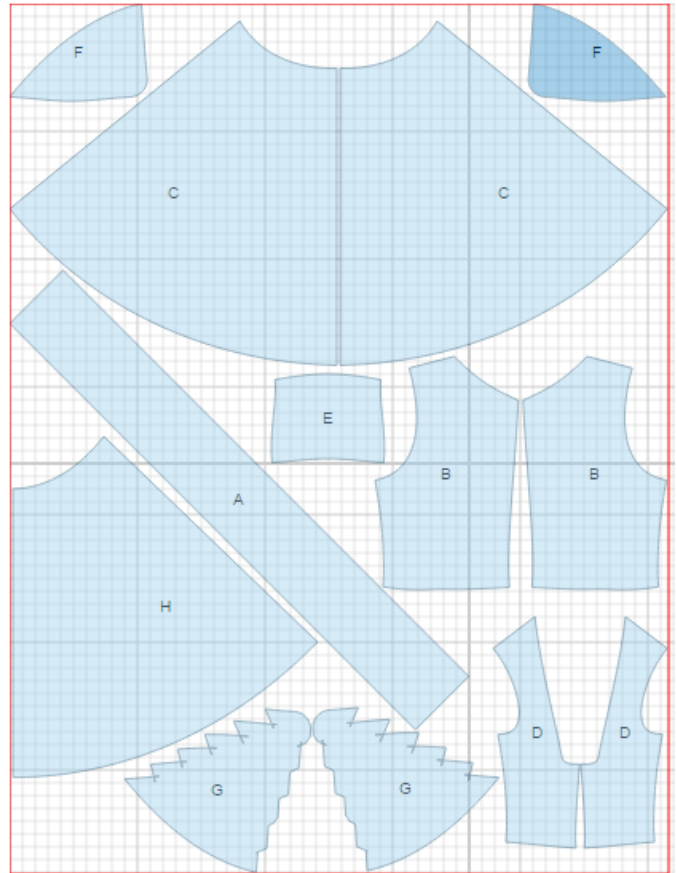
1. Upper back – cut 2 (B)
2. Lower back – cut 2 (C)
3. Upper center front – cut 1 (E)
4. Upper side front – cut 2 (D)
5. Lower front – cut 1 on fold (H)
6. Collar - cut 1 (A)

Contrast fabric:

1. Inner front insert – cut 2 (F)
2. Outer front insert – cut 2 (G)

Fusible interfacing:

1. Collar – cut 1 (A)



INSTRUCTIONS:

1. Sew darts on upper backs, press toward center. Sew upper backs to lower backs, serge and press seams upwards. Serge separately center back edges. Sew center back seam starting at zipper end mark down to hem. Press seam and slit for zipper opening. Sew in zipper.
2. Make and fasten pleats on outer front inserts (folds are directed downwards). Baste pleats in place. Pin outer inserts to inner inserts right sides together and stitch upper edge, clip into curves. Turn right side out, straighten and press. Lay right insert onto left one according to marks, baste lower edges together.
3. Sew side fronts to center fronts. Serge seams and press toward center. Sew shoulder seams, serge and press toward back. Sew a short row of stitches along inner corners of front scoop. Make a few clips to stitch line. Pin insert wrong sides together to neck/bosom edge. Sew insert to neck/bosom edge, easing around the corners.
4. Fold collar in half lengthwise, right sides together and stitch ends. Turn collar right side out, straighten and press. Pin collar to wrong side of neck/bosom edge, over insert. Line up center of collar with center of front. Sew collar to entire neck/bosom edge, ending at zipper closure. The seam will be hidden under the collar on the right side of the dress. Serge the seam.
5. Sew upper and lower fronts, serge and press seam upwards.
6. Sew side seams. Serge and press seams toward back.
7. Cut a bias tape (or use purchased bias tape) 4 cm wide, length is equal to armhole length + 4 cm. Fold bias tape in half lengthwise wrong side inwards and press. Place bias tape on armhole from the right side and stitch. Fold bias tape to wrong side and topstitch along the fold from the front of the garment.
8. Serge lower edge of dress. Press hem allowance under, and topstitch.

Our Sewist Team has created a short tutorial for the [construction of the bodice](#).

TECHNICAL DRAWING:

