

Recommendations on fabric: natural or mixed fabric suitable for dresses.

You will also need: fusible interfacing, invisible zipper.

Seam allowances: hem of dress, sleeve, upper edge of pocket – 2.0 cm, other seams – 1 cm.

**Note on seam allowances:**

- If the pattern has double contour the seam allowances are included. They are 1 cm unless specified otherwise.
- If the pattern has single contour, the seam allowances are NOT included and need to be added when laying out the pattern.

**Note on length of fabric:**

*Attention! The amount of fabric needed for your pattern is not included. It will depend on the selected pattern size, the width, and design of the fabric you plan to use. First, print all the paper patterns and lay them out at the width of fabric you plan to use (usually from 90 to 150 cm). Measure how much fabric you will need. Don't forget to account for pieces that need to be cut multiple times and pieces that are cut on the fold.*



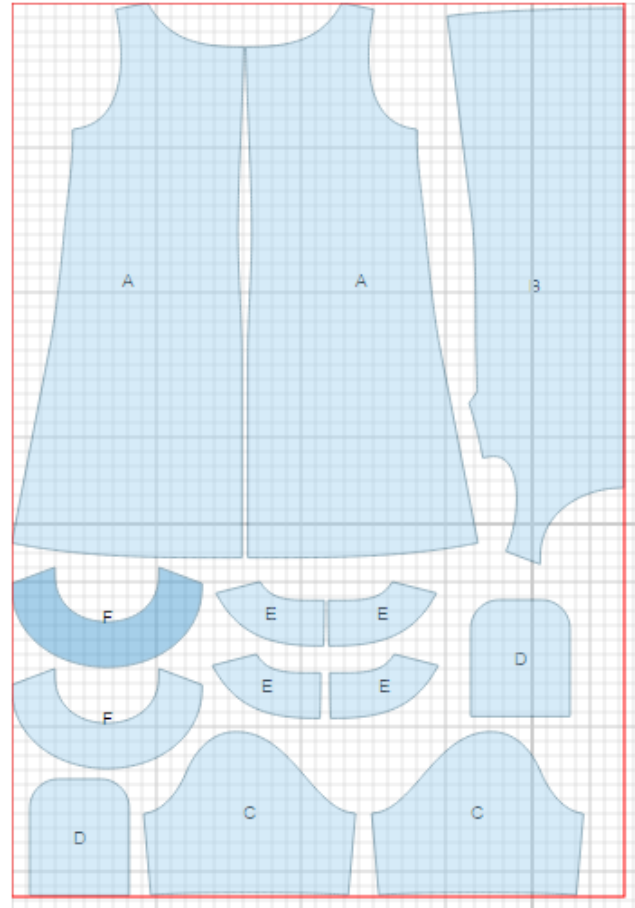
## CUTTING:

### Main fabric:

1. Back – cut 2 (A)
2. Front – cut 1 on fold (B)
3. Sleeve – cut 2 (C)
4. Pocket – cut 2 (D)
5. Back neck yoke/facing – cut 4 (E)
6. Front neck yoke/facing – cut 2 (F)

### Fusible interfacing:

1. Back neck facing – cut 2 (E)
2. Front neck facing – cut 1 (F)



## INSTRUCTIONS:

1. Apply fusible interfacing to neck facings.
2. Serge back center edges separately. Sew back center seam from zipper mark down to hem. Press apart seam.
3. Sew darts on front, press darts downwards.
4. Serge pocket on contour. Turn edges under and press. Fold upper edge to wrong side and topstitch. Topstitch pocket onto dress according to marking.
5. Sew shoulder and side seams, serge and press seams toward back.

6. Sew shoulder edges of yoke and yoke facings. Press seams apart. Pin yoke and yoke facings right sides together and stitch on neckline. Sew yoke to dress neck edge. Serge seam and press toward facing. Make decorative stitch on yoke at 0.2 cm from seam.

7. Sew in zipper.

8. Sew sleeve seams. Serge seam and press toward back. Make a gathering stitch along sleeve cap for adjusting ease. Sew sleeves into armhole matching notches and adjusting ease. Serge seams.

9. Serge lower edges of dress and sleeves, press hem allowance under and topstitch.

**TECHNICAL DRAWING:**

