

Recommendations on fabric: natural or mixed suiting fabric; fabric for decoration.

You will also need: fusible interfacing, invisible zipper, 1 button.

Seam allowances: hem of dress – 2 cm, other seams – 1 cm.

Note on seam allowances:

- If the pattern has double contour the seam allowances are included. They are 1 cm unless specified otherwise.

- If the pattern has single contour, the seam allowances are NOT included and need to be added when laying out the pattern.

Note on length of fabric:

Attention! The amount of fabric needed for your pattern is not included. It will depend on the selected pattern size, the width, and design of the fabric you plan to use. First, print all the paper patterns and lay them out at the width of fabric you plan to use (usually from 90 to 150 cm). Measure how much fabric you will need. Don't forget to account for pieces that need to be cut multiple times and pieces that are cut on the fold.



CUTTING:

Main fabric 1:

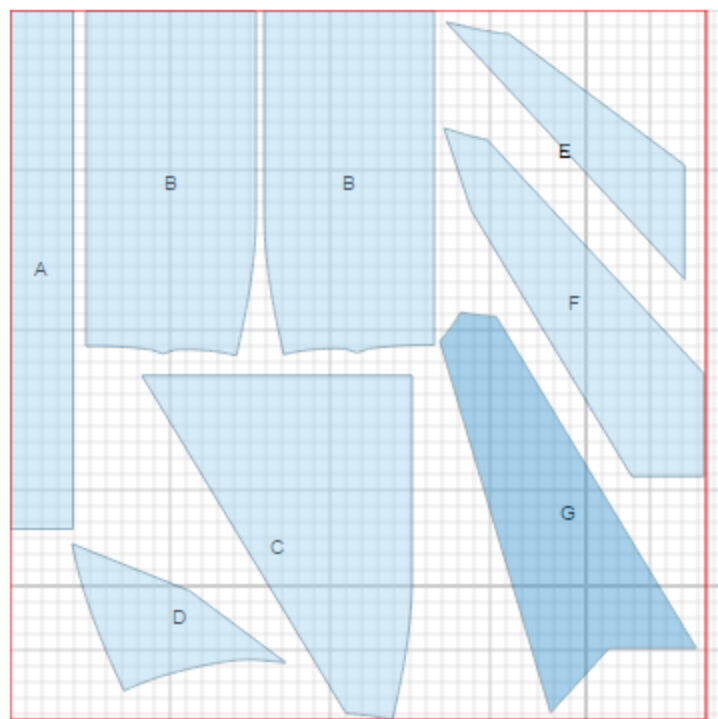
1. Back – cut 2 (B)
2. Right front – cut 1 (D)
3. Center front – cut 1 (F)
4. Left front – cut 1 (C)
5. Front fall part – cut 1 (G)
6. Waistband – cut 1 (A)

Fabric for decoration:

1. Front insert – cut 1 (E)

Fusible interfacing:

1. Waistband – cut 1



INSTRUCTIONS:

1. Apply fusible interfacing to waistband.
2. Sew darts on back, press toward center.
3. Serge center back edges separately on each side. Sew center backseam from mark down to hem. Press seam open, pressing zipper slit. Sew in zipper.
4. Fold fall part in half lengthwise right side inwards and stitch lower edge. Turn right side out, straighten and press.
5. Place together left and center fronts, put fall part between them (length of fall part is 2 cm less) and sew. Press seam toward center and serge.
6. Sew front insert to center front, press seam toward insert and press. Sew right front to insert, serge and press seam toward insert.
7. Sew side seams. Serge and press seams toward back.
8. Sew waistband to upper edge of the skirt. Stitch ends of waistband, clip corners and turn out. Turn inner edge of waistband under and topstitch into connecting seam. Press waistband.
9. Serge lower edge of the skirt, press hem allowance under and slipstitch.
10. Mark and make buttonhole on waistband. Sew on button.

TECHNICAL DRAWING:

