

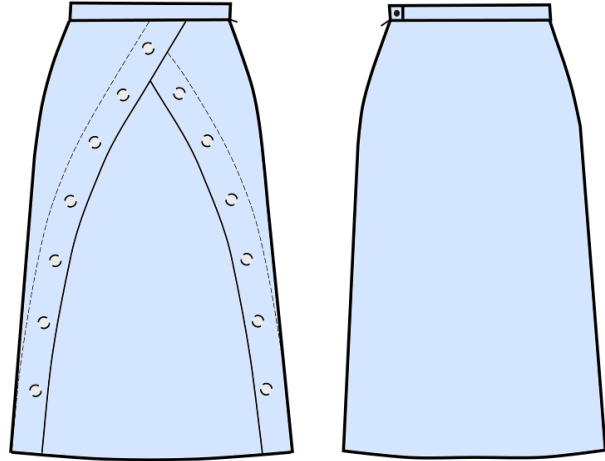
PATTERN OVERVIEW

Made-to-measure pattern:

The pattern is drafted by our proprietary software specifically for your measurements that you supply when making an online order. We strongly recommend that you request a free preview to check the style lines and the amount of fabric needed before ordering the paid version.

Pattern features:

A-line skirt with straight waistband, front inserts, zipper in side left seam. The skirt sits at natural waistline, the length is at center of kneecap, ease around waist is approx. 1", ease around hips approx. 1.5" depending on the size.



Recommendations on fabric: suiting fabric, bottom weight woven fabric.

You will also need: fusible interfacing, 1 zipper (the length in cm and inches is mentioned on the pattern piece, 14 buttons.

Seam allowances:

If the pattern has double contour the seam allowances are included and are as follows: $\frac{5}{8}$ inch on all edges. hem of skirt – 1.5 inch.

Attention! Seam allowances are NOT included by default and need to be added when laying out and cutting details if your pattern has single contour.

Fabric requirements:

To estimate fabric requirements, get a free preview for the pattern in your size at www.Lekala.net and use [Online Fabric Estimator](#). Alternatively you may print all the paper patterns and lay them out at the width of fabric you plan to use (usually 44 inches to 60 inches) to see how much fabric you will need. Don't forget to count pair parts and symmetrical parts.

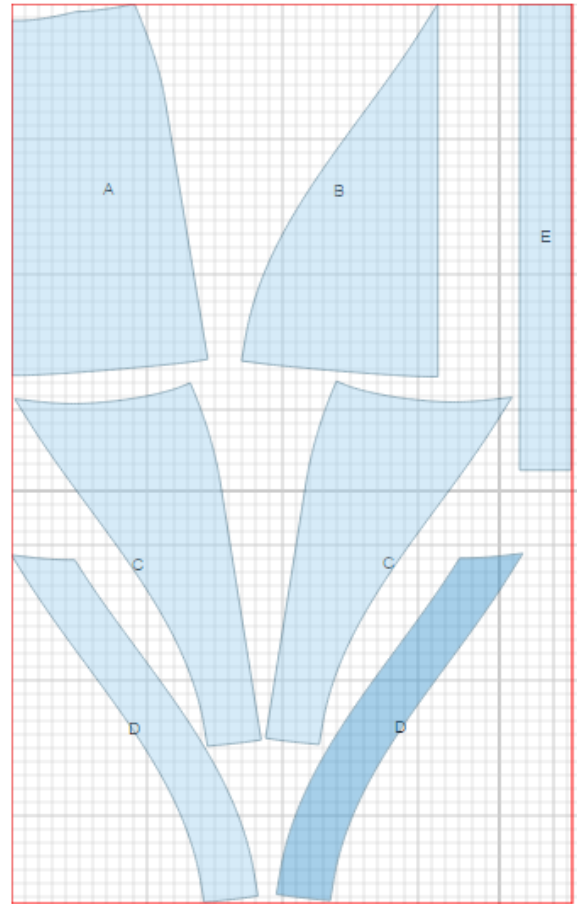
When sewing the garment, pay attention to notches, they must match up.

CUTTING:

Lay pattern pieces out using the straight of grain line. Some pieces may be cut on the fold. This is noted on the pattern piece. Mark all notches and other design features such as darts, pleats etc. from the pattern onto your fabric.

Main fabric:

1. Back - cut 1 on fold (A)
2. Center front - cut 1 on fold (B)
3. Side front - cut 2 (C)
4. Wrap facing - cut 2 (D)
5. Waistband - cut 1 (E)



Fusible interfacing:

1. Waistband - cut 1 (E)

* The capital letters in brackets correspond to pattern blocks as seen in Online Fabric Estimator.

INSTRUCTIONS:

1. Sew darts on backs, press towards center.
2. Pin wrap facings to side fronts, right sides together, and sew. Clip seam. Turn facing to wrong side and press.
3. Lay left front onto right side of center front overlapping at facing width, pin and topstitch along inner edge. Serge and press seam.
4. Lay right front onto center front and overlaying left front, pin and topstitch along inner edge. Serge and press seams.
5. Sew right side seam. Serge and press seam towards back.
6. Sew left side seam from zipper notch to bottom. Press seam open, including opening for zipper.
7. Sew in a lapped zipper according to zipper instructions that come with the packet.
8. Apply fusible interfacing to waistband. Press the waistband in half lengthwise.
9. Sew waistband to waistline edge, right sides together, matching notches. The side back left seam allowance should line up with the lapped zipper and the front right side should extend enough so that the waistband can overlap. Press the seam allowance of the unstitched long edge under. With right sides together, sew short ends, clip corner and turn right side out. Slipstitch waistband in place.
10. Serge lower edge of skirt, turn under, press, and slipstitch.
11. Make buttonhole on left side of waistband and sew button on right.
12. Sew decorative buttons on front according to marks.

*If you have any further questions regarding the pattern,
please don't hesitate to contact us at info@sewist.com.
We are always happy to help!*
