

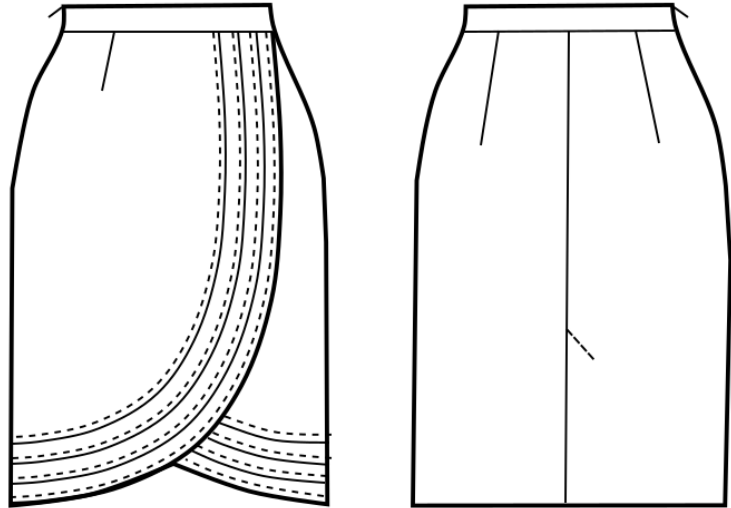
## PATTERN OVERVIEW

### Made-to-measure pattern:

The pattern is drafted by our proprietary software specifically for your measurements that you supply when making an online order. We strongly recommend that you request a free preview to check the style lines and the amount of fabric needed before ordering the paid version.

### Pattern features:

Pencil wrap skirt with straight waistband, front layers, zipper in side left seam. The skirt sits at natural waistline, the length is at center of kneecap, ease around waist is approx. 1", ease around hips approx. 1.5" depending on the size.



**Recommendations on fabric:** wool or semi-wool, dress fabric, suiting fabric, bottom weight woven fabric.

**You will also need:** fusible interfacing, 1 zipper (the length in cm and inches is mentioned on the pattern piece).

### Seam allowances:

If the pattern has double contour the seam allowances are included and are as follows: 1 inch on all edges. hem of skirt – 1.5 inch.

Attention! Seam allowances are NOT included by default and need to be added when laying out and cutting details if your pattern has single contour.

### Fabric requirements:

To estimate fabric requirements, get a free preview for the pattern in your size at [www.Lekala.net](http://www.Lekala.net) and use [Online Fabric Estimator](#). Alternatively you may print all the paper patterns and lay them out at the width of fabric you plan to use (usually 44 inches to 60 inches) to see how much fabric you will need. Don't forget to count pair parts and symmetrical parts.

When sewing the garment, pay attention to notches, they must match up.

## CUTTING:

Lay pattern pieces out using the straight of grain line. Some pieces may be cut on the fold. This is noted on the pattern piece. Mark all notches and other design features such as darts, pleats etc. from the pattern onto your fabric.

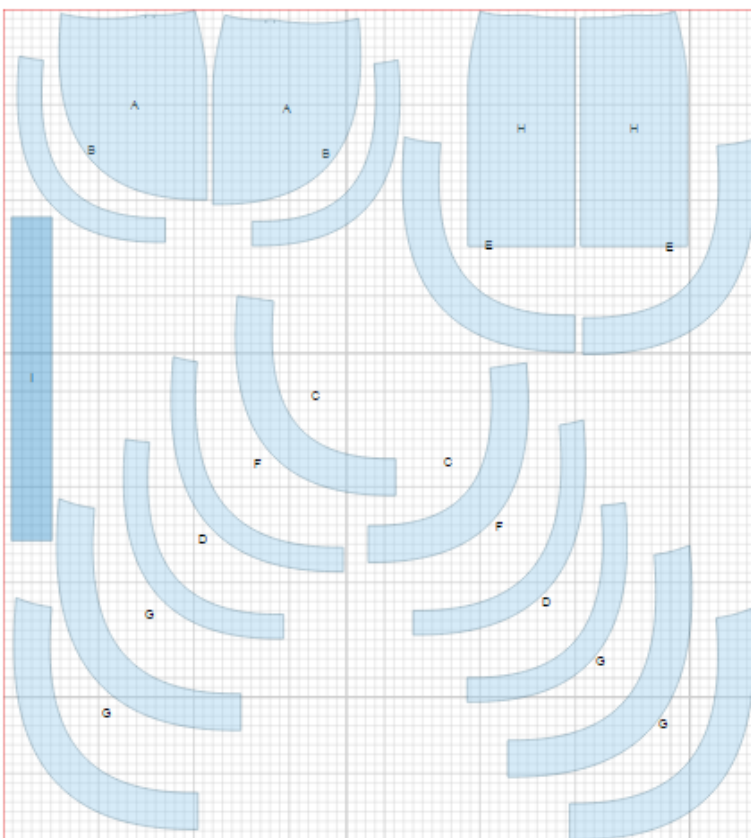
### Main fabric:

1. Front - cut 2 (A)
2. Front facing - cut 2 (B)
3. Second layer - cut 2 (C)
4. Second layer facing - cut 2 (D)
5. Third layer - cut 2 (D)
6. Third layer facing - cut 2 (F)
7. Lower layer - cut 4 (G)
8. Back - cut 2 (H)
9. Waistband - cut 1 (I)

### Fusible interfacing:

1. Waistband - cut 1 (I)

\* The capital letters in brackets correspond to pattern blocks as seen in Online Fabric Estimator.



## INSTRUCTIONS:

1. Apply fusible interfacing to waistband.
2. Sew darts on backs, press towards center. Serge center back edges and vent edges separately. Sew center back seam from top down to vent. Press seam open. Press vent seam allowances towards left side seam. Press right side of the vent at 1 cm and topstitch. Fasten vent seam allowances with machine stitch.
3. Place lower layer pieces right sides together and sew on long edge. Trim seam, turn out, press and topstitch with decorative stitch.
4. Place third layer pieces right sides together and sew on long edge. Trim seam, turn out, press, and topstitch with decorative stitch.
5. Place second layer pieces right sides together and sew on long edge. Trim seam, turn out, press and topstitch with decorative stitch.
6. Sew darts on fronts, press toward center. Place front facing on front, right sides together, and sew on long edge. Trim and press seam.
7. Pin all layers together, attach to front facing and sew. Turn out, serge, press and topstitch with decorative stitch.
8. Place front pieces one onto another and match on upper edge and sew.
9. Sew right side seam. Serge and press seam towards back.
10. Sew left side seam from zipper notch to bottom. Press seam open, including opening for zipper.
11. Sew in a lapped zipper according to zipper instructions that come with the packet.
12. Serge lower edge of back, turn under, press, and slipstitch.

- 
13. Sew waistband to waistline edge, right sides together, matching notches. The side back left seam allowance should line up with the lapped zipper and the front right side should extend enough so that the waistband can overlap. Press the seam allowance of the unstitched long edge under.
  14. Fold waistband along center line at the ends, right sides together, and sew short ends. Trim corners. Pull corners out so they are square.
  15. Press seam toward waistband. Trim and grade seams as needed. Press along center line so that waistband-facing is toward inside and turned edge meets up with the edge of the seamline. Slip-stitch in place. Stitch in the ditch along edges of the outside waistband if desired.
  16. Make buttonhole on left side and sew button on right.

---

*If you have any further questions regarding the pattern,  
please don't hesitate to contact us at [info@sewist.com](mailto:info@sewist.com).  
We are always happy to help!*

---