

Recommendations on fabric: natural or mixed suiting fabric of 2 colours.

You will also need: fusible interfacing, invisible zipper.

Seam allowances: on hem – 3.0 cm, other seams – 1.0 cm.

Note on seam allowances:

- If the pattern has double contour the seam allowances are included. They are 1 cm unless specified otherwise.

- If the pattern has single contour, the seam allowances are NOT included and need to be added when laying out the pattern.

Note on length of fabric:

Attention! The amount of fabric needed for your pattern is not included. It will depend on the selected pattern size, the width, and design of the fabric you plan to use. First, print all the paper patterns and lay them out at the width of fabric you plan to use (usually from 90 to 150 cm). Measure how much fabric you will need. Don't forget to account for pieces that need to be cut multiple times and pieces that are cut on the fold.



CUTTING:

Main fabric 1:

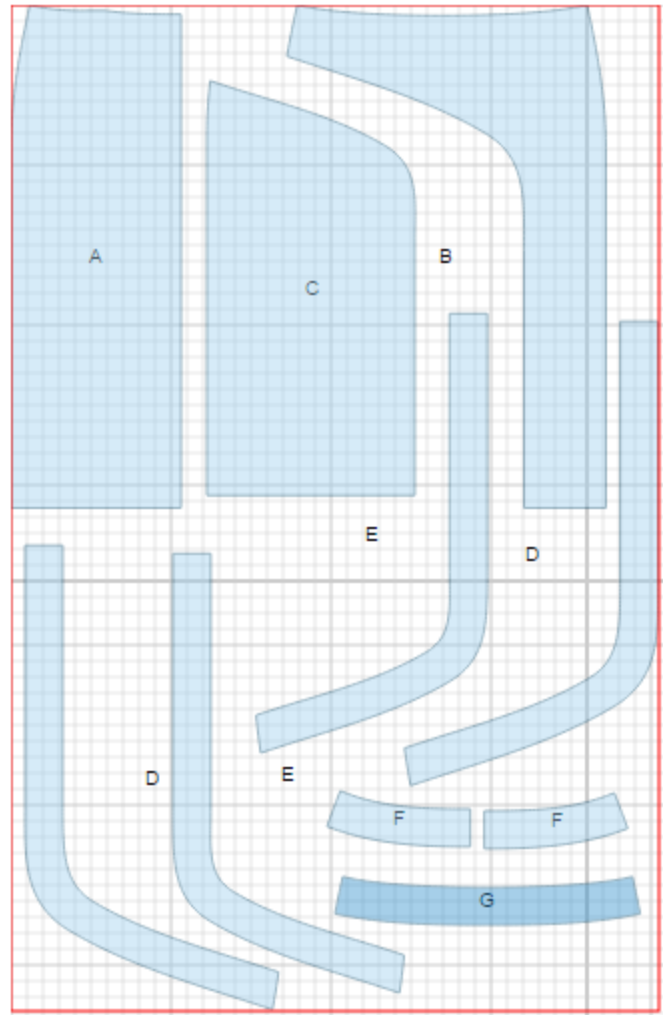
1. Back – cut 2 (A)
2. Left front – cut 1 (C)
3. Left placket – cut 2 (E)
5. Back facing – cut 2 (F)

Main fabric 2:

1. Right front – cut 1 (B)
2. Right placket – cut 2 (D)
3. Front facing – cut 1 (G)

Fusible interfacing:

1. Back facing – cut 2 (F)
2. Front facing – cut 1 (G)
3. Left placket – cut 1 (E)
4. Right placket – cut 1 (D)



INSTRUCTIONS:

1. Apply fusible interfacing to listed pieces.
2. Sew darts on back, press seams toward center. Serge center back edges separately on each side. Sew center back seam from mark down to hem. Press seam open, pressing zipper slit. Sew in zipper.
3. Sew placket to right front, clip into seam and press toward placket. Sew placket to left front, clip into seam and press toward placket. Sew fronts together from left side edge to slit mark, press seam open.

4. Sew together inner plackets from left side edge to slit mark, press seam open. Serge outer edges. Place plackets and front right sides together and stitch slit sides. Turn plackets to the inside, straighten, press. Topstitch inner plackets into outer plackets connecting seam.
5. Sew and press apart side seams of facings. Serge lower edge. Place facing and skirt right sides together and stitch upper edge. Understitch seam onto facing at 0.2 cm from the seam. Turn facings to wrong side, press. Turn center edges under and baste to zipper tape. Fasten facing to side seams.
6. Serge lower edge of the skirt, press under, and slipstitch.

TECHNICAL DRAWING:

